

ABERDEENSHIRE ²⁰

LOCAL DEVELOPMENT PLAN
Supplementary Guidance

ENERGETICA

3



APRIL 2017

Supplementary Guidance

Energetica

Aberdeen City and Aberdeenshire Councils, in association with Scottish Enterprise and other stakeholders, support the Energetica project, as promoted in the National Planning Framework 3. Within the Energetica area, as defined on the attached map, development must make a contribution to the quality of life, environmental performance and economic development targets. This contribution will result in the transformation of the Energetica area into a high quality lifestyle, leisure and, ultimately, a global business location showcasing the latest energy and low carbon technology.

We will approve development in the Energetica area, subject to other policies, if:

- 1. It is demonstrated through mix, use and design of structures, that innovation and experimentation have been employed in the pursuit of the highest levels of economic, social and environmental sustainability; AND**
- 2. It is demonstrated that the energy performance has been carefully considered in the design process and has resulted in buildings and layouts which have exemplary energy performance or introduce innovation in this regards; AND**
- 3. Buildings demonstrate future-proofing through flexibility in their design to allow for easy extension and/or conversion to other uses over the full life-span of the building; AND**
- 4. It is demonstrated that the layout and design of buildings promotes the creation of social hubs, civic spaces, streets as places and active frontages within developments; AND**
- 5. It is demonstrated that the implementation of open space requirements emphasise the aspiration for active lifestyles within the area; AND**
- 6. There is a commitment to the provision of high quality landscaping which contributes to a unified sense of place within the area.**

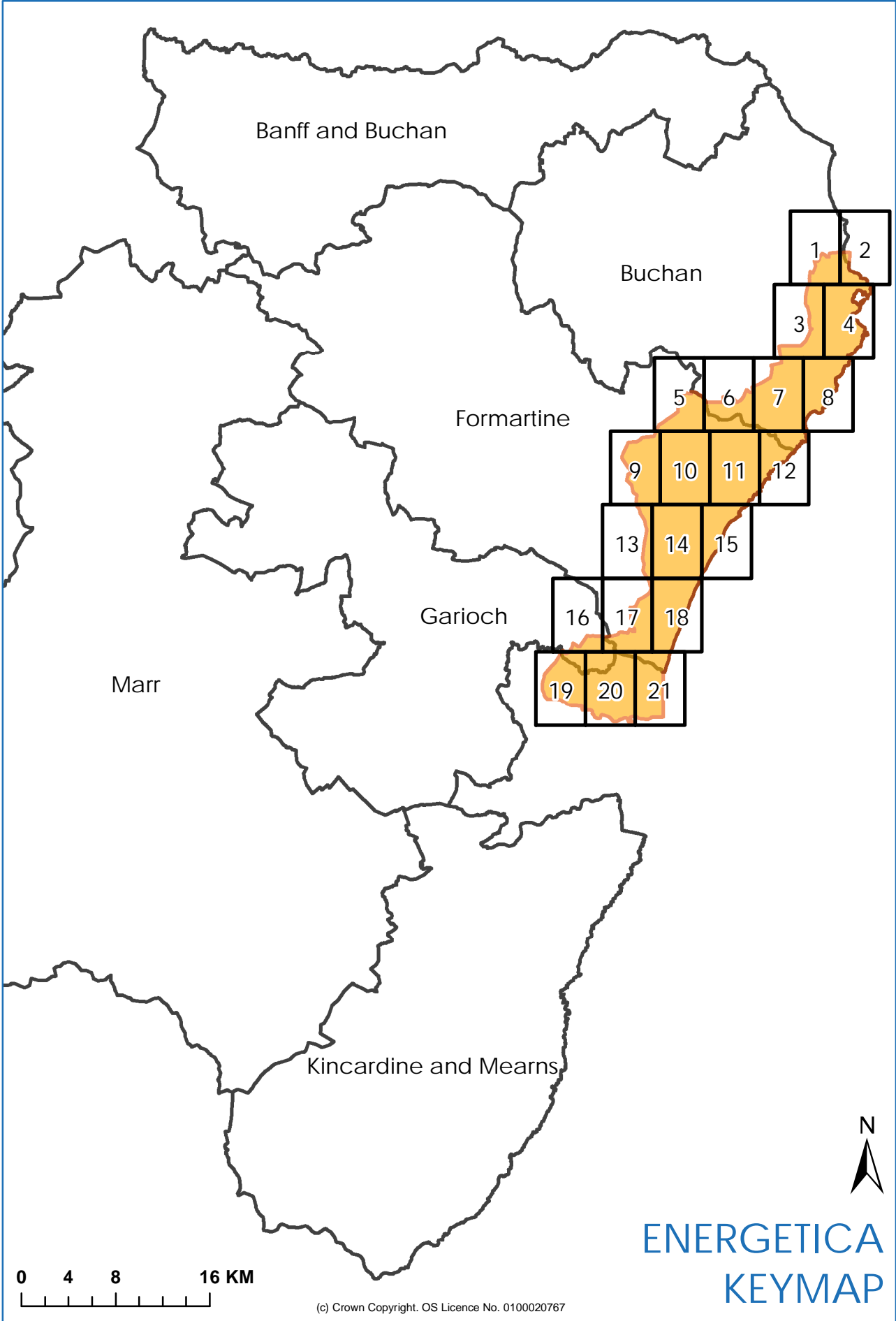
***Planning applications for major developments will be required to provide an Energetica Compliance Statement to demonstrate that the above criteria have been fulfilled to the satisfaction of the planning authority. This may be included as part of the documents within a design set** Planning applications for local developments are also encouraged to provide Energetica Compliance Statements.**

Planning advice is published separately as a guide to achieving these specific requirements. This advice also sets out appropriate responses to meeting other, more general, planning policy requirements.

Aberdeen City and Aberdeenshire Councils accept that the scale of contribution made by the development to Energetica should be proportionate to the scale of the development proposed. Where documents are subject to an agreed masterplan or other design document, these should translate Energetica aspirations into layout and design of new developments to ensure a coherent identity in the Energetica area. It does not apply to householder planning applications, advertisement consent or planning applications of an agricultural nature. *Planning advice may identify additional exceptions from this policy.*

It is recognised that many of the planning and design actions required to achieve this ambition are common for all developments across Aberdeen City and Aberdeenshire. In addition it is expected that development in the Energetica area will lead by example on issues such as: the mixture and co-location of facilities to create business villages; environmental sustainability and performance; landscaping and greenspace management; travel; and built form.

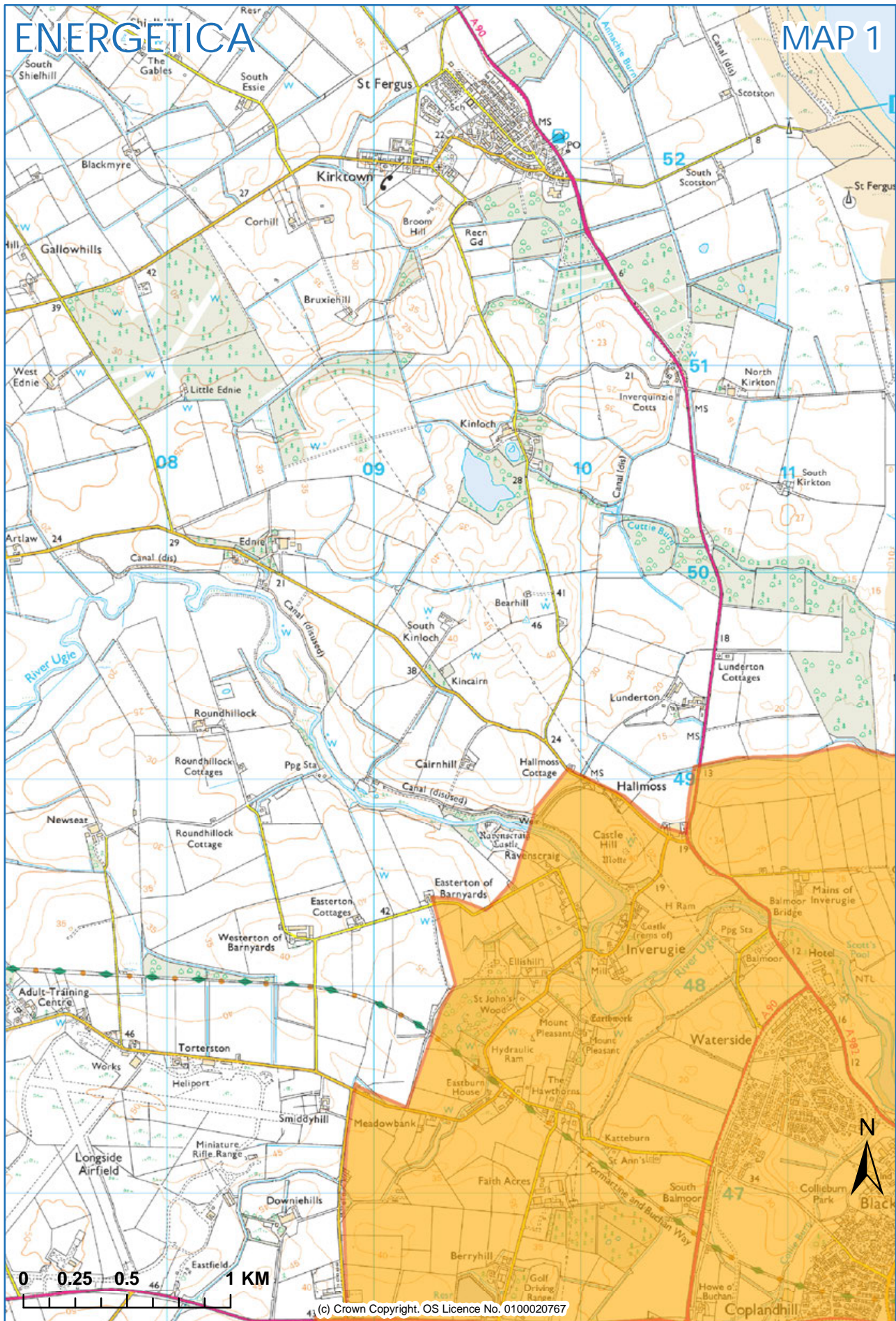
* A design set is a set of design documents including any Frameworks, masterplans design briefs or pattern books prepared for a development site



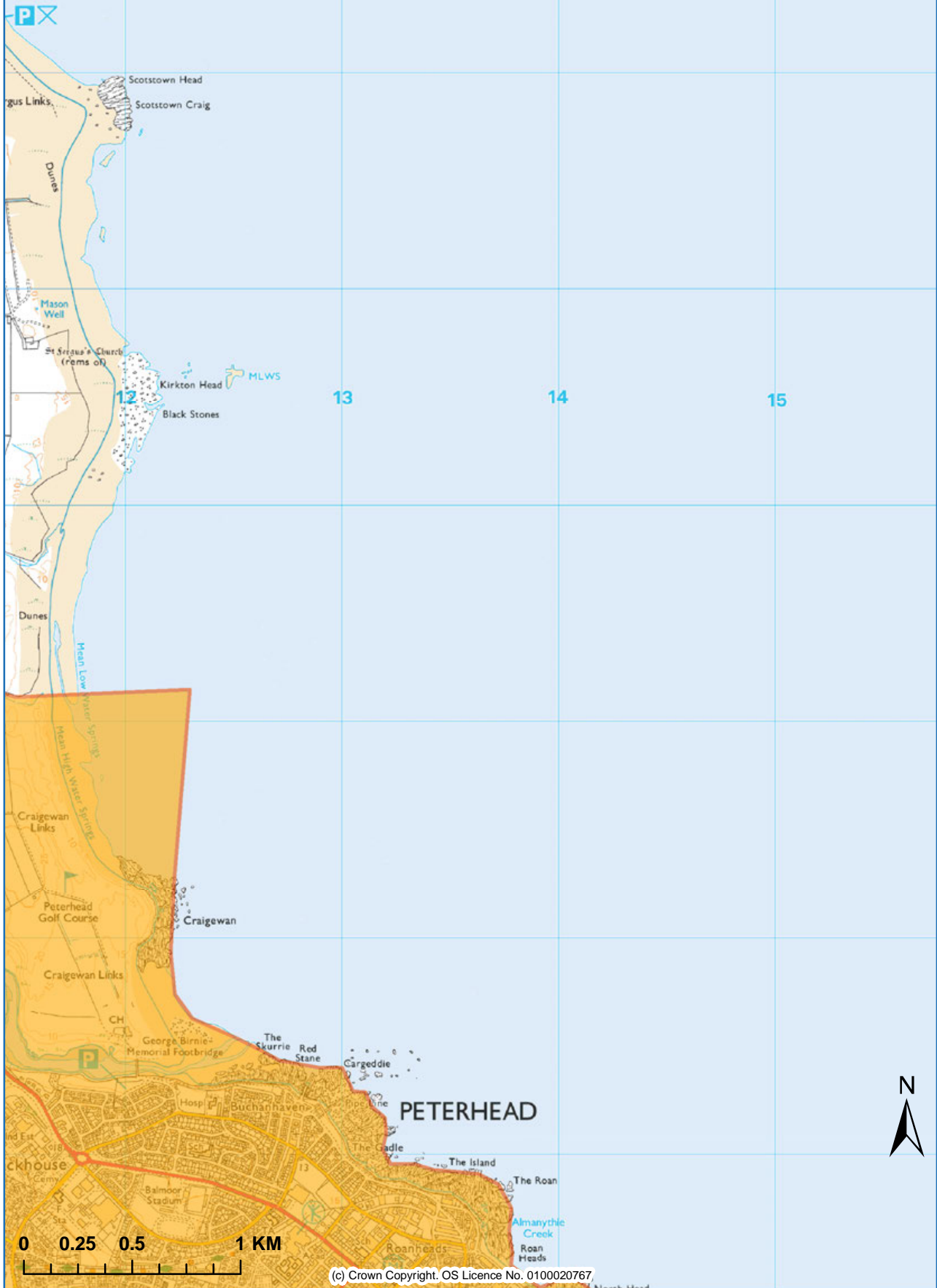
(c) Crown Copyright. OS Licence No. 0100020767

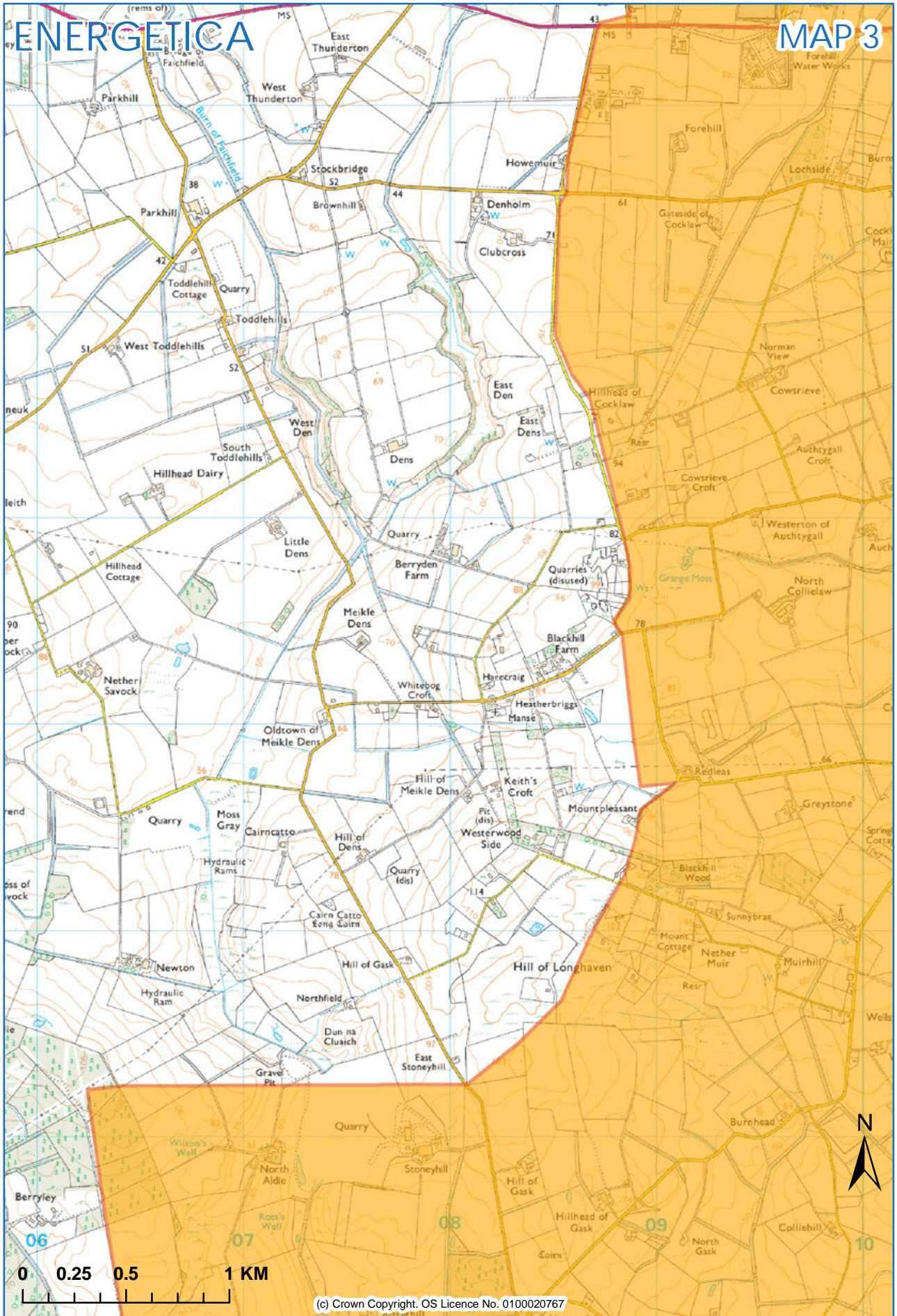
ENERGETICA

MAP 1



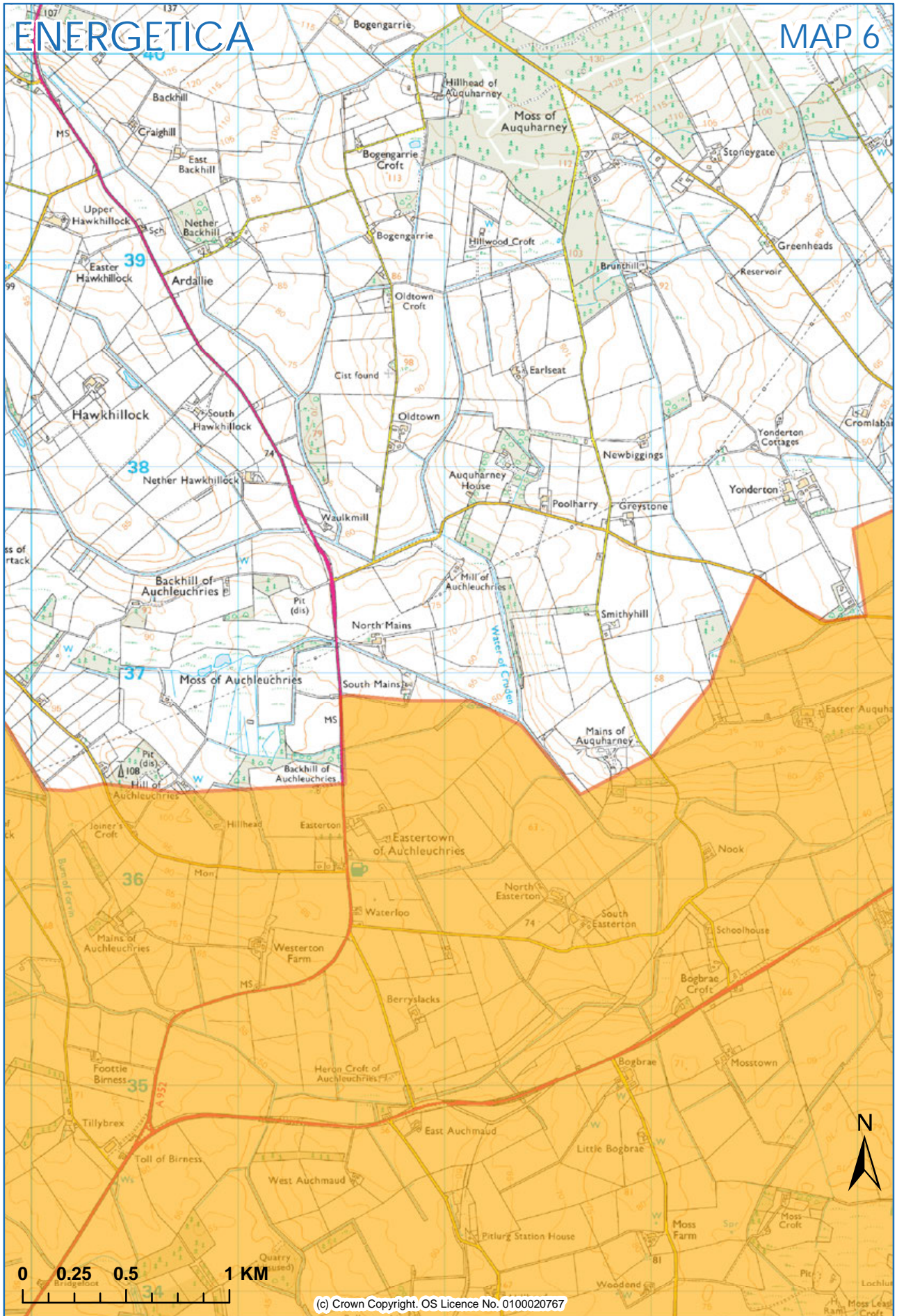
(c) Crown Copyright. OS Licence No. 0100020767

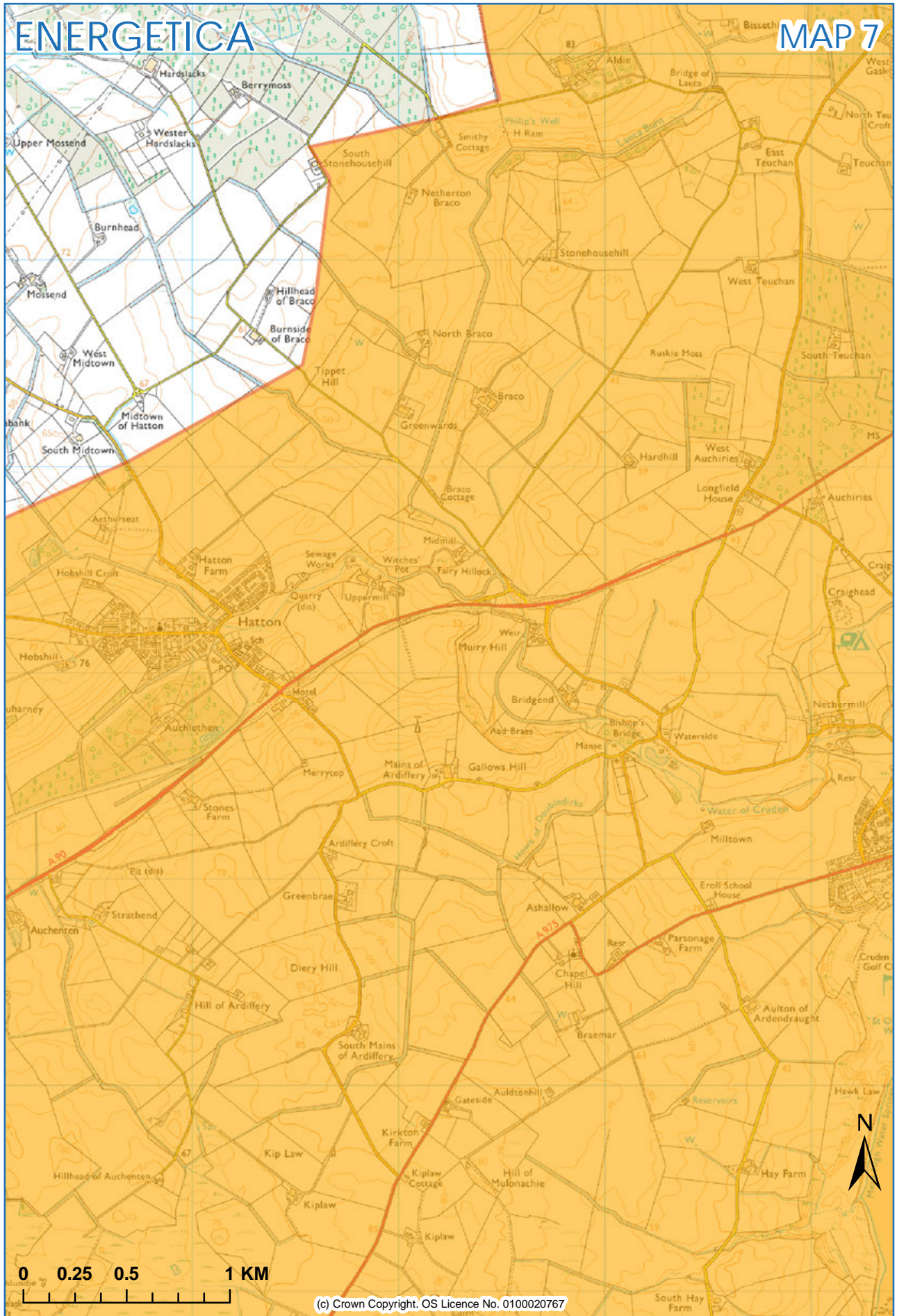






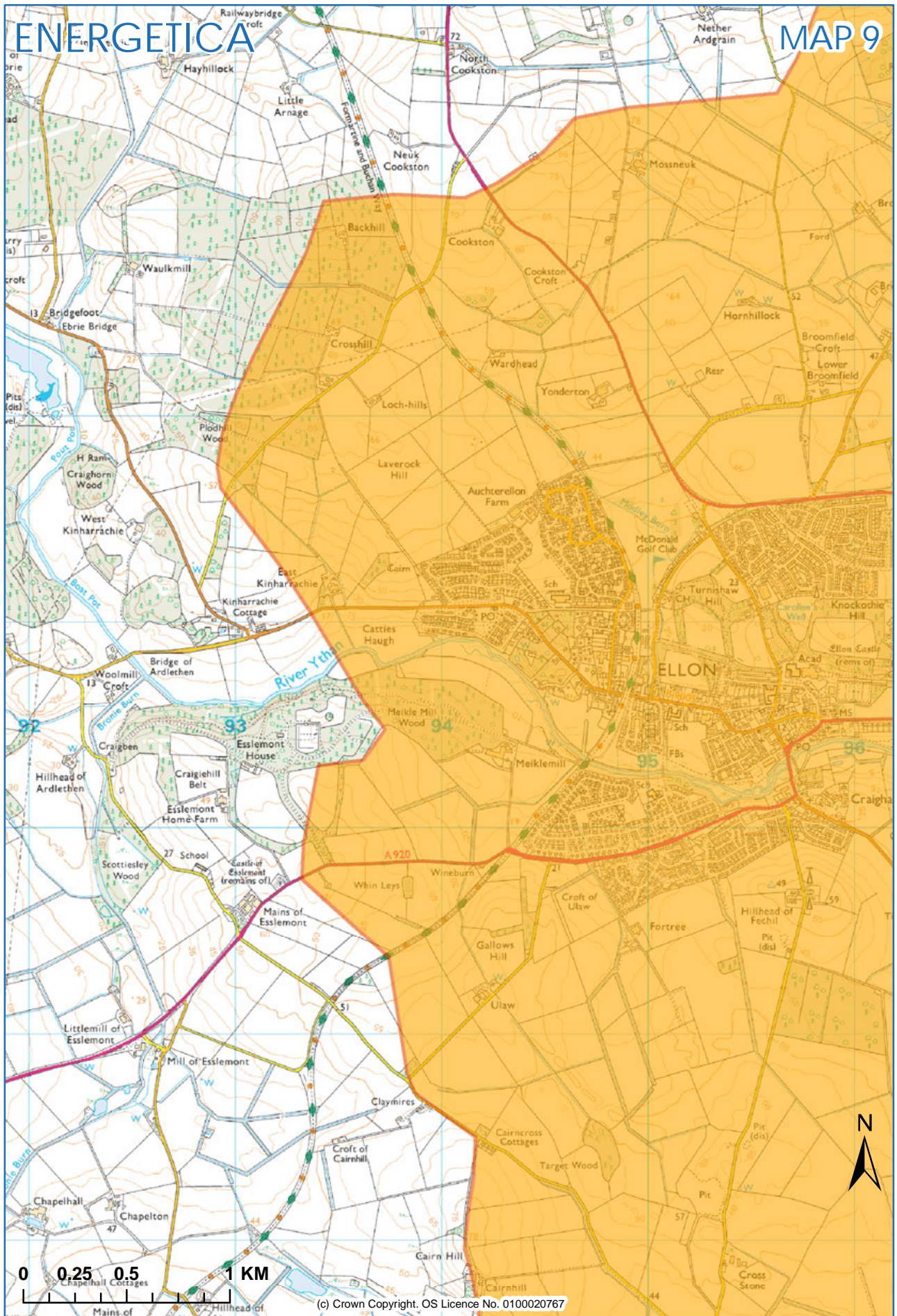
(c) Crown Copyright. OS Licence No. 0100020767

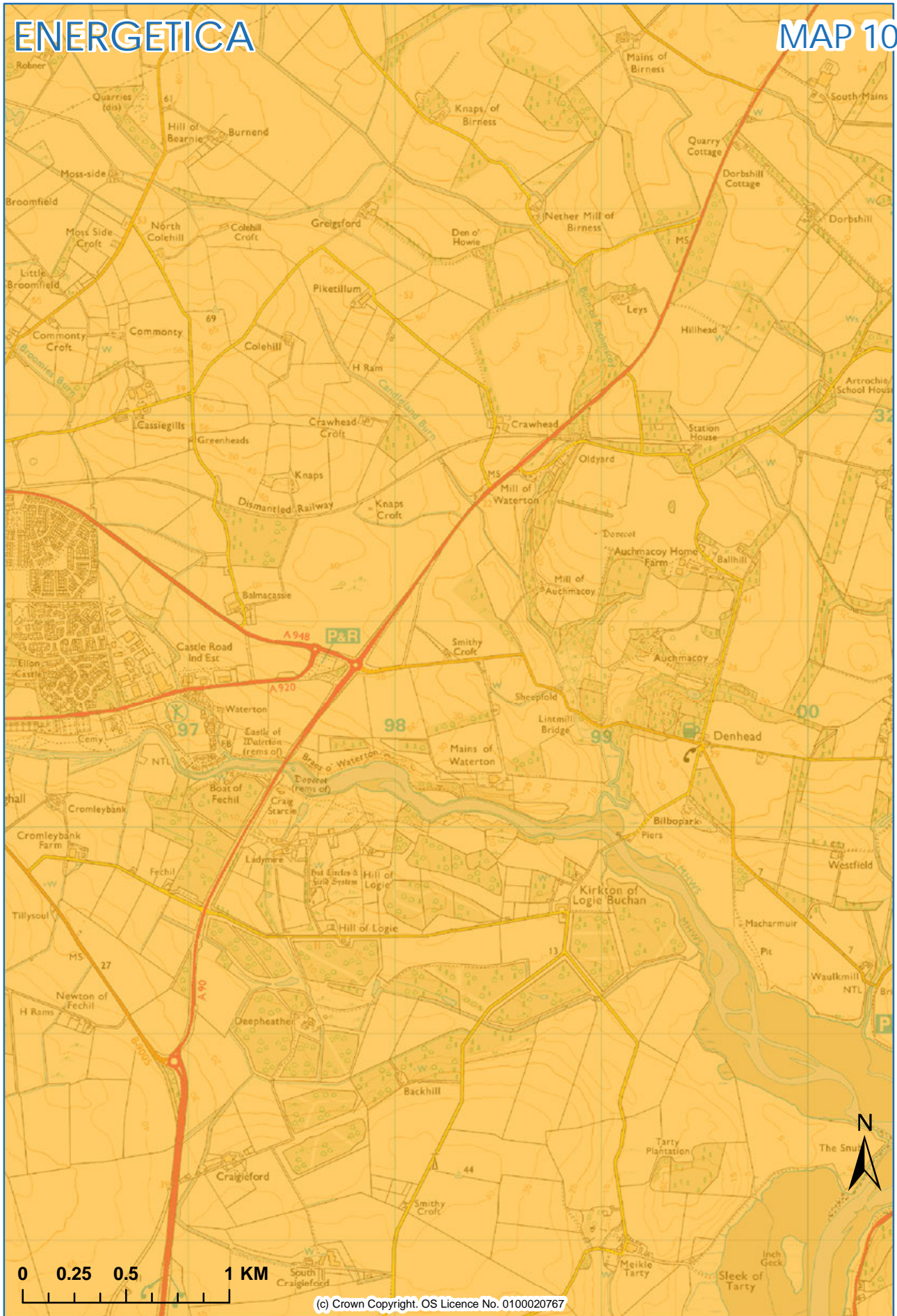




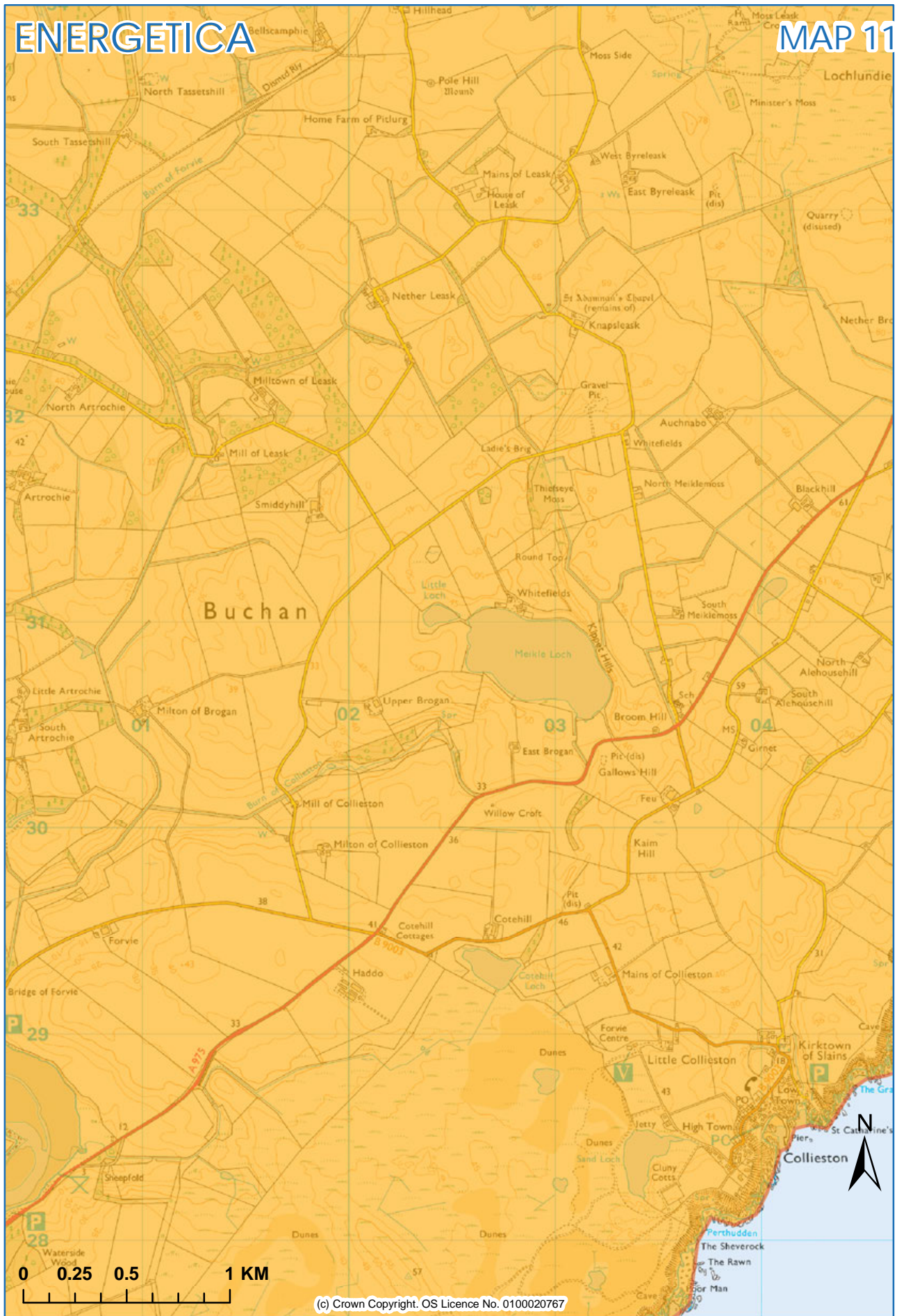


(c) Crown Copyright. OS Licence No. 0100020767





(c) Crown Copyright. OS Licence No. 0100020767



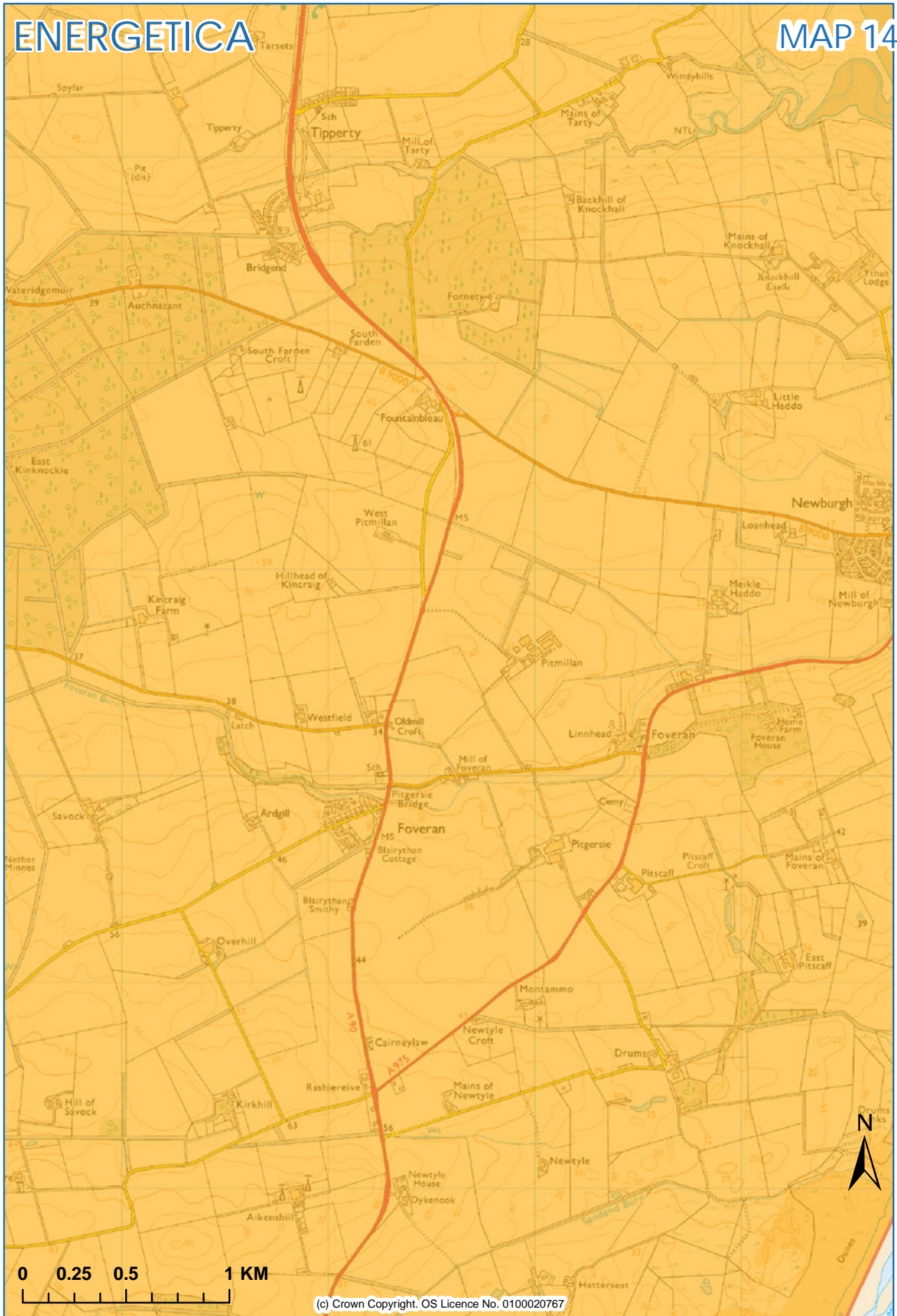
(c) Crown Copyright. OS Licence No. 0100020767

ENERGETICA

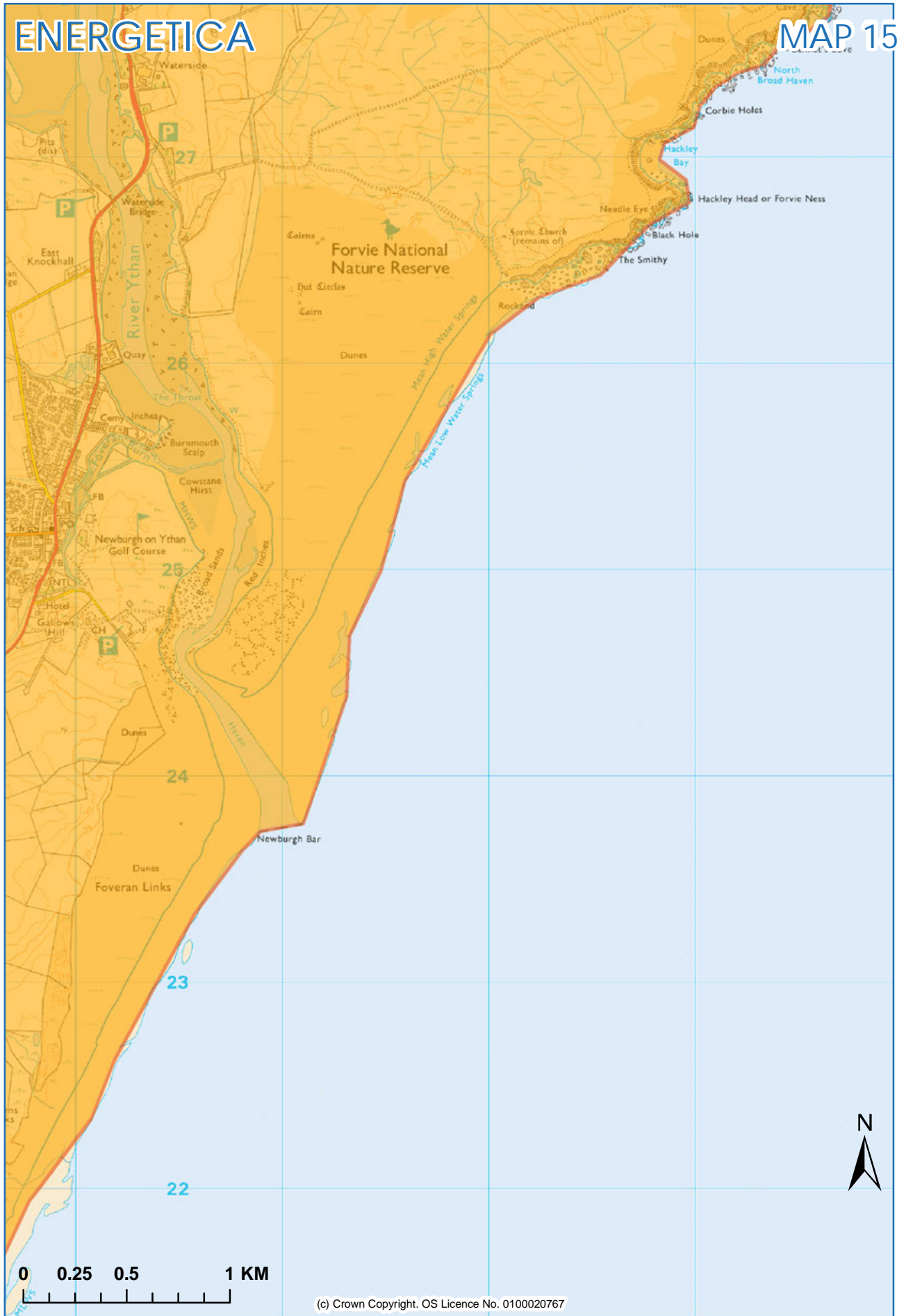
MAP 1'2



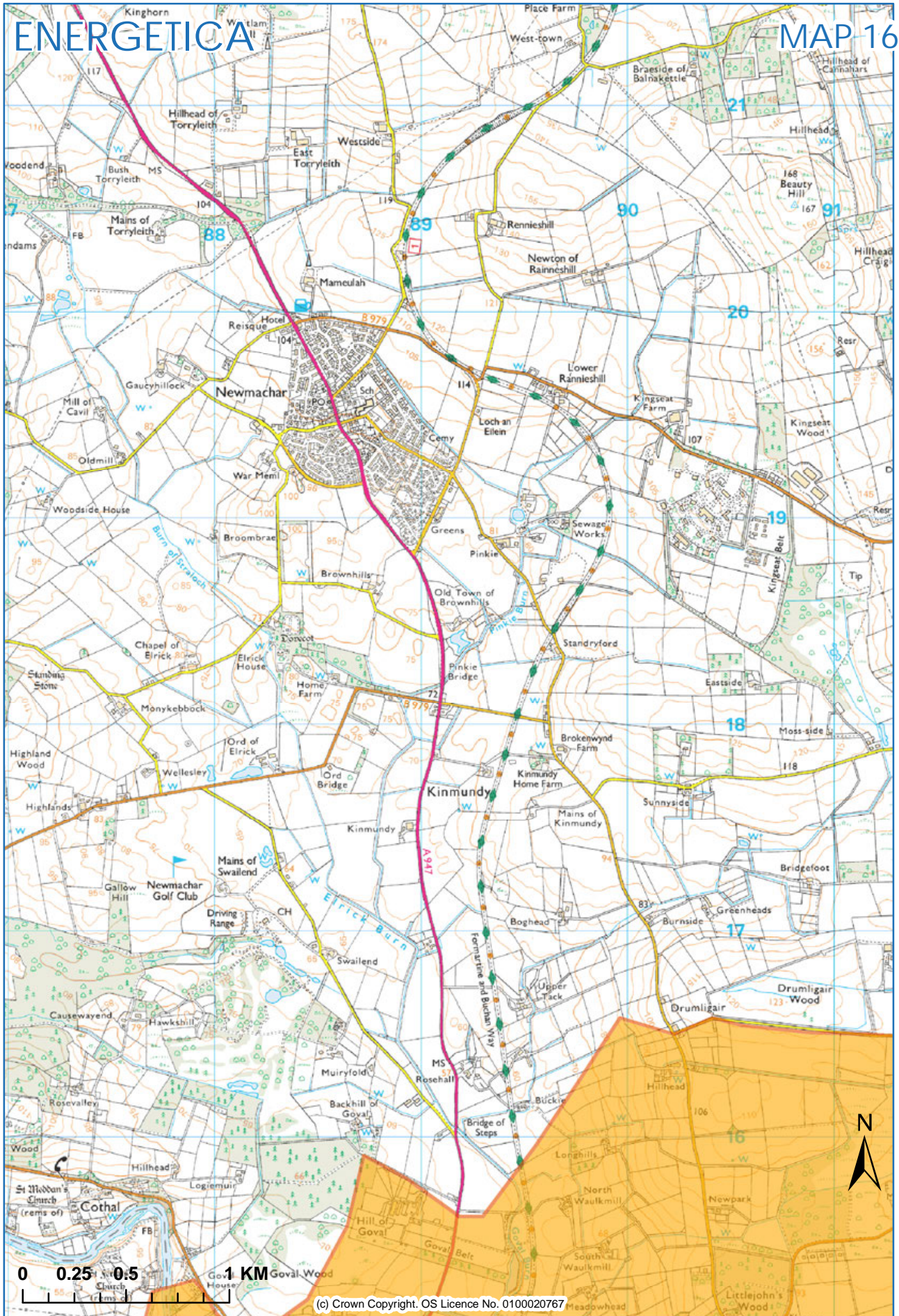
(c) Crown Copyright. OS Licence No. 0100020767



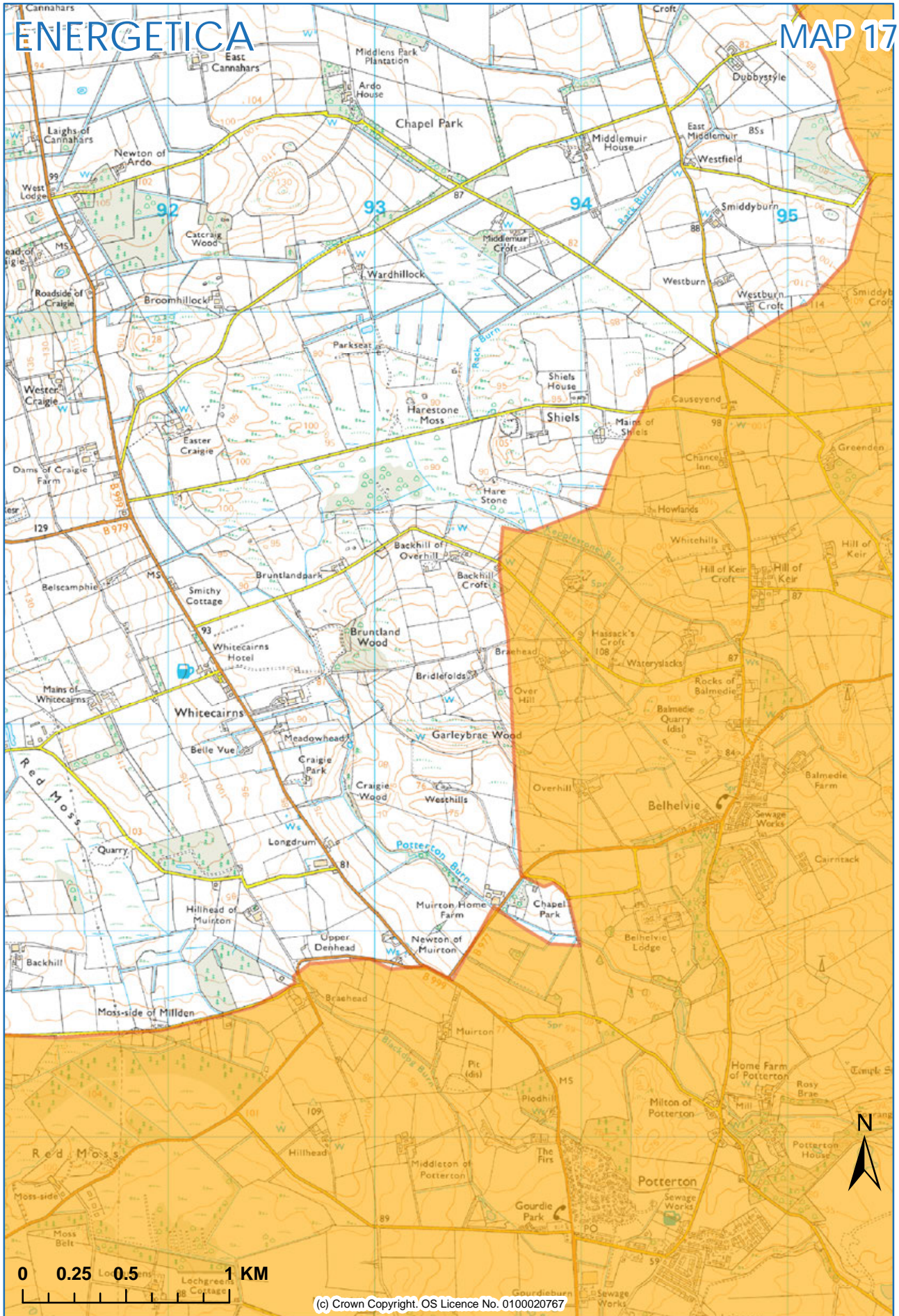
(c) Crown Copyright. OS Licence No. 0100020767

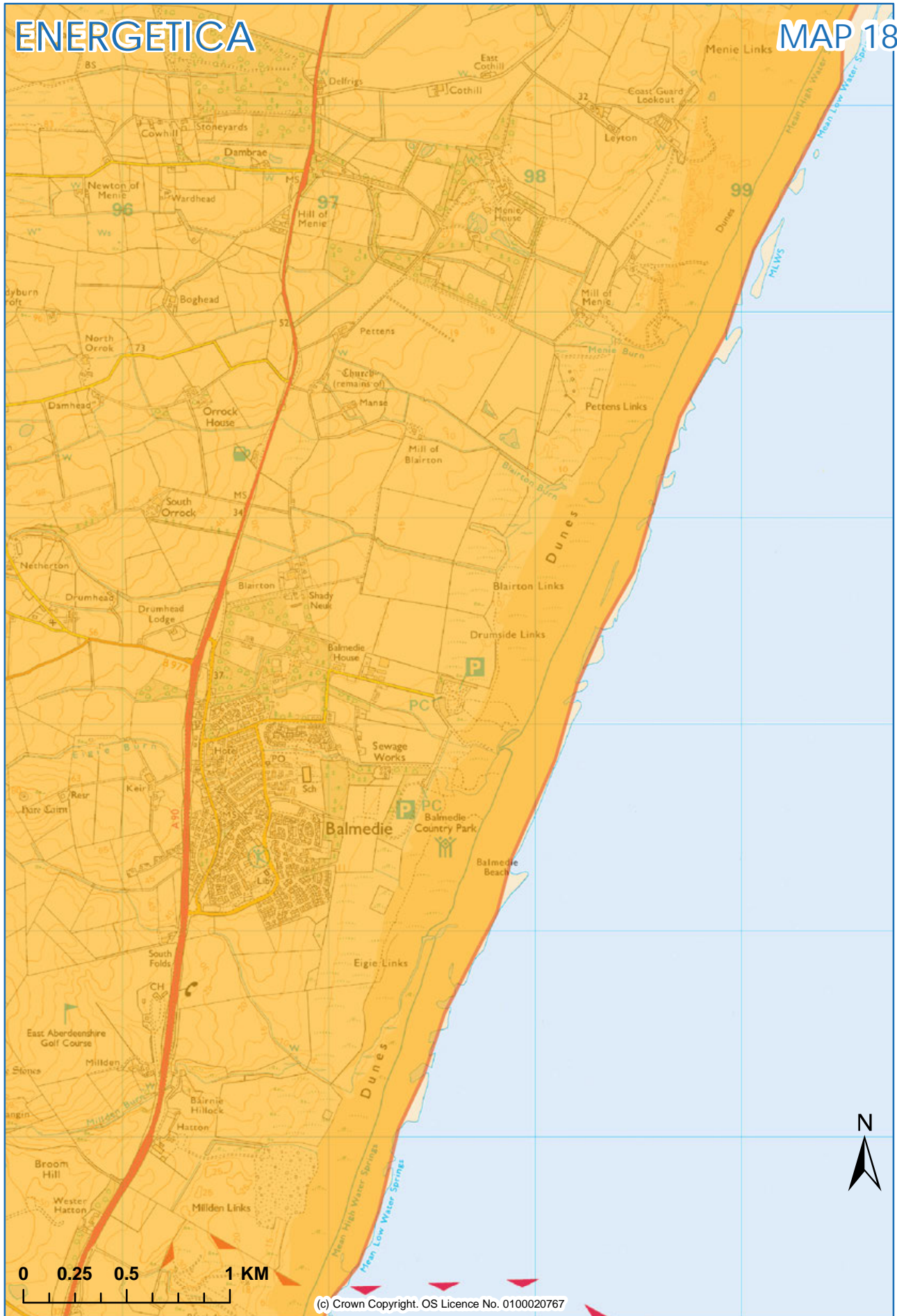


(c) Crown Copyright. OS Licence No. 0100020767

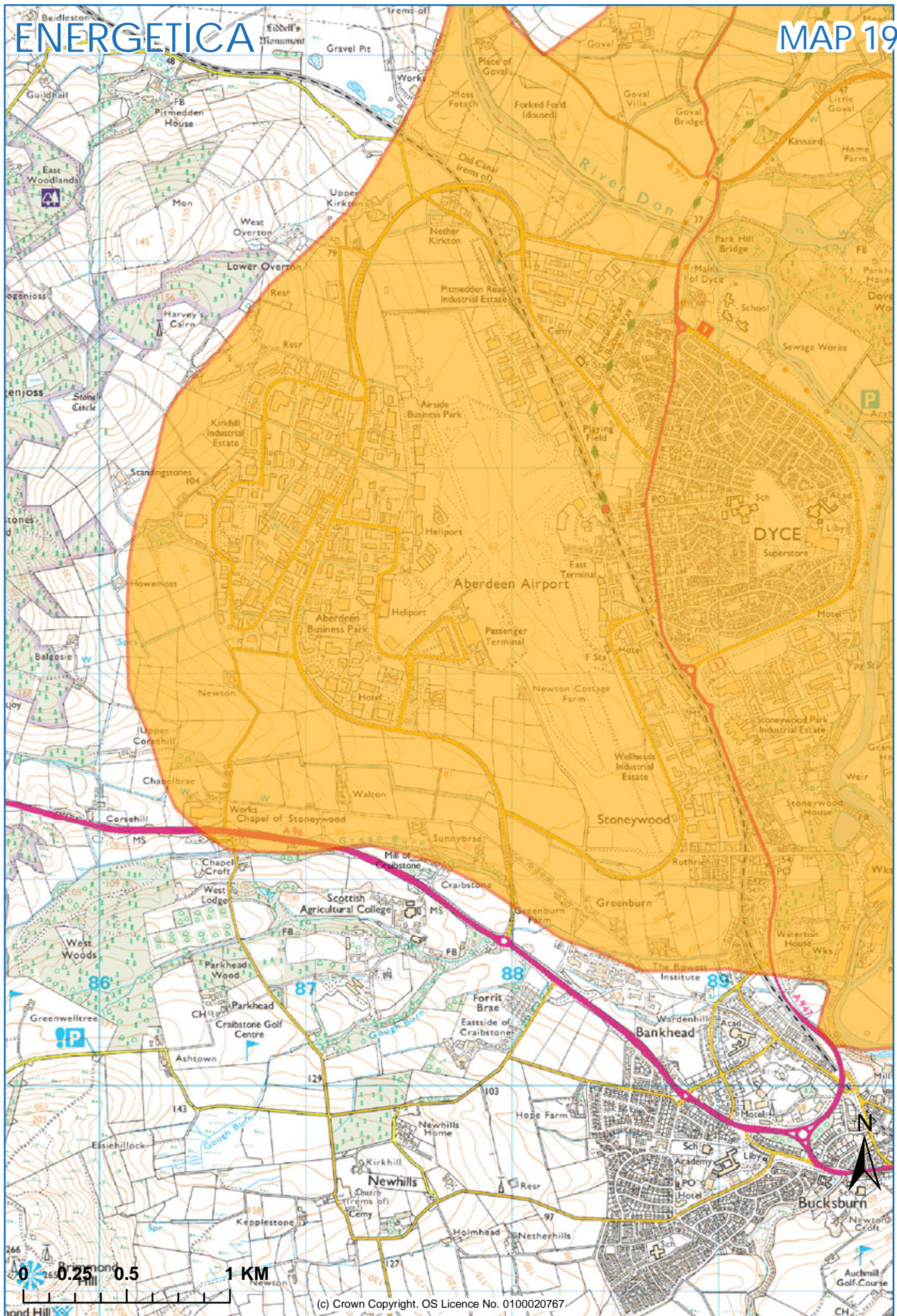


(c) Crown Copyright. OS Licence No. 0100020767

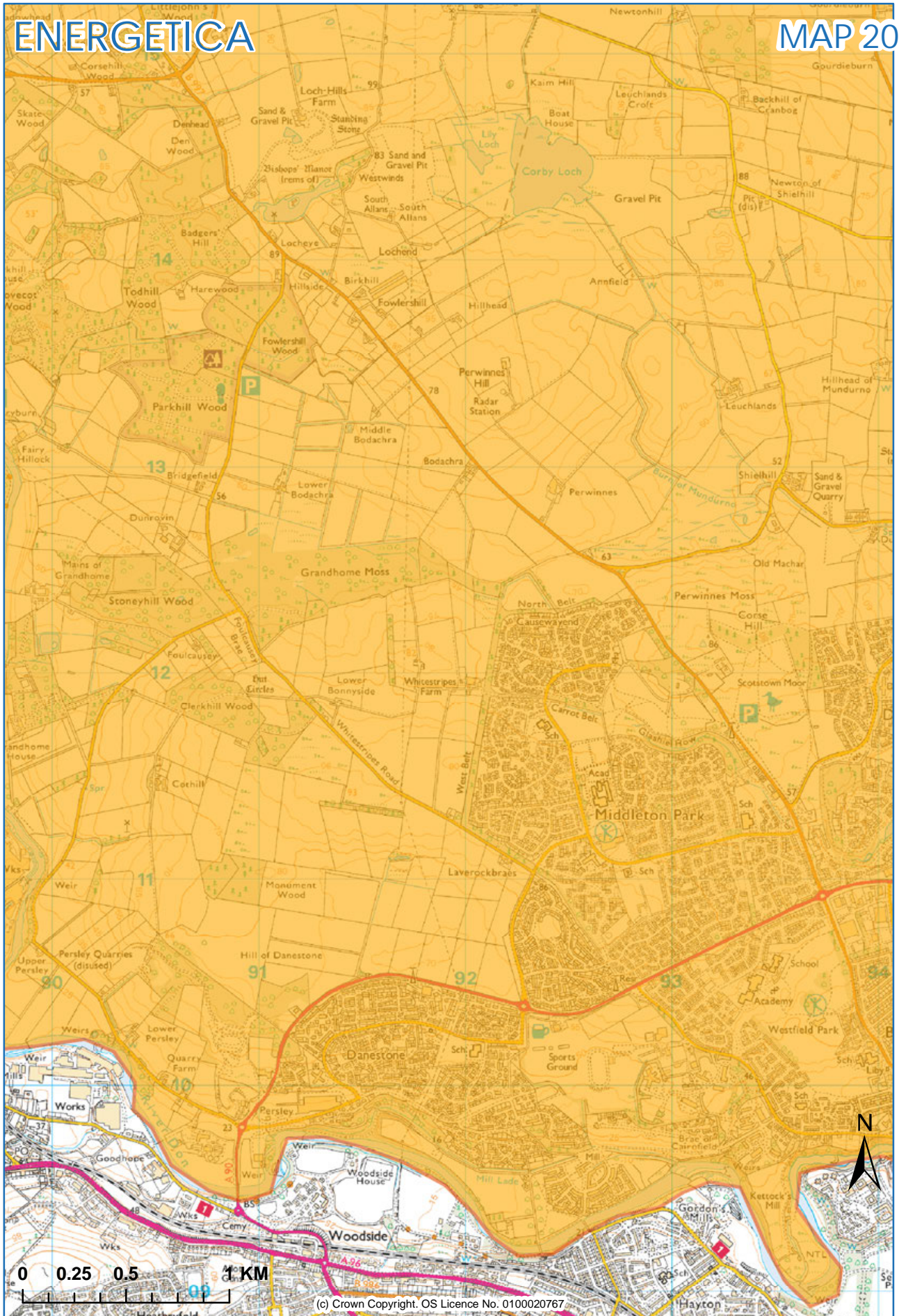




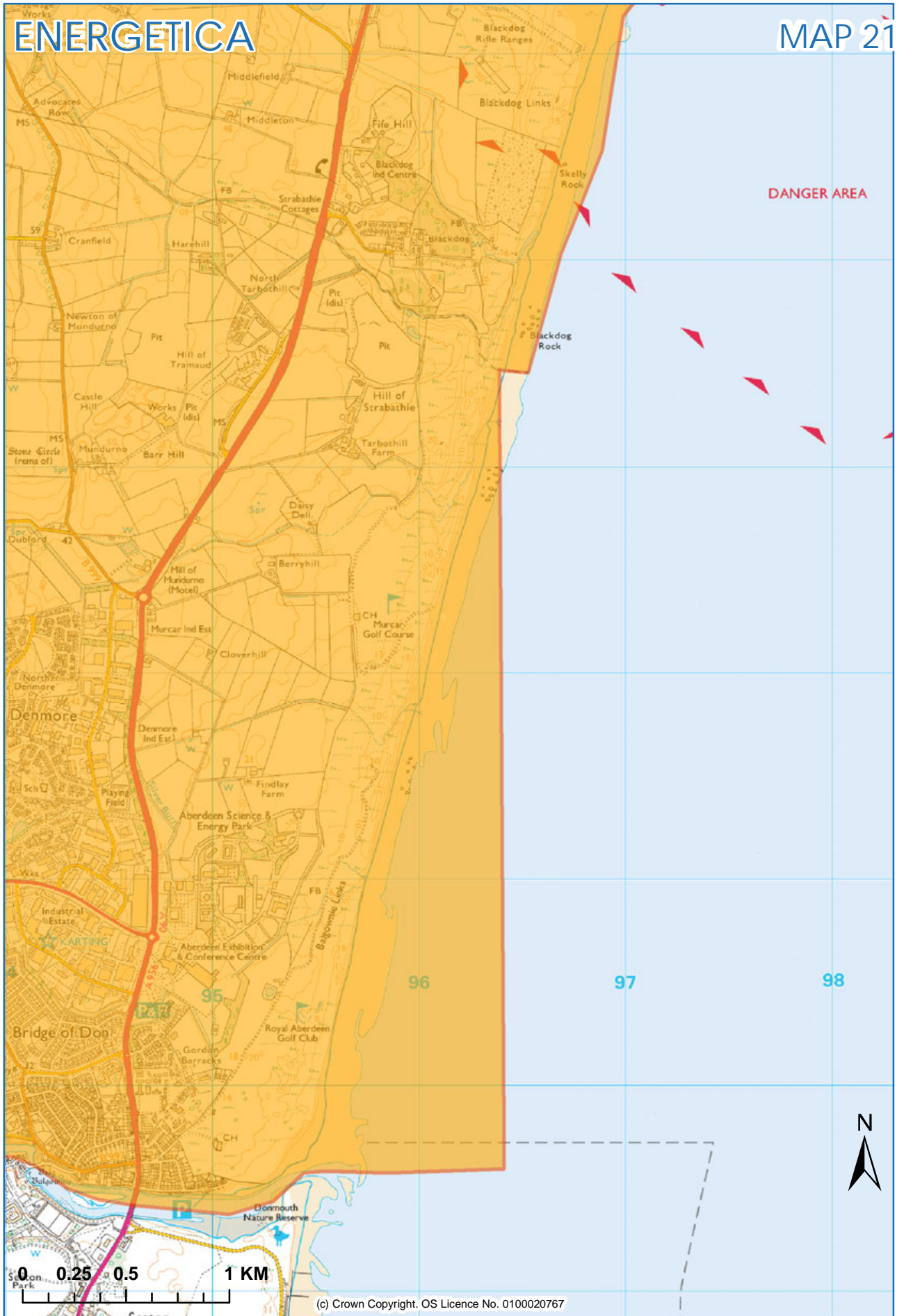
(c) Crown Copyright. OS Licence No. 0100020767



(c) Crown Copyright. OS Licence No. 0100020767



(c) Crown Copyright. OS Licence No. 0100020767



(c) Crown Copyright. OS Licence No. 0100020767