

ABERDEENSHIRE
LOCAL DEVELOPMENT PLAN **2014-2018**
Supplementary Guidance

6

**AREAS SAFEGUARDED
OR IDENTIFIED AS AREAS
OF SEARCH FOR
MINERALS DEVELOPMENT**



APRIL 2017

Supplementary Guidance

Areas safeguarded or identified as areas of search for minerals development

Policy PR1 of the Aberdeenshire Local Development Plan identifies important mineral safeguarded sites, where other forms of development should not generally be allowed, and wider areas of search where mineral reserves should not be sterilised by inappropriate developments.

These are shown on the “Safeguarding Resources” proposals map of the Local Development Plan. That map is insufficiently detailed to allow the identification of specific boundaries and the following maps allow the boundaries of this area to be accurately defined. These boundaries reflect the local application of this policy area and do not impact on either the principle of the policy (which is established by Policy SR1), or the spatial strategy of the wider plan area.

These sites are shown on the proposals maps

Table 1 Areas of search for minerals (sand and gravel reserves)

	Map Number		Map Number
Memsie West	1	Bo, Turriff	18
Memsie North	2	Tyrie	19
Newmill West	2	Castleton, Turriff	20
Catterline	3	Bracklamore, New Pitsligo	21
Roughilly, Portsoy	4	Aberchirder West	22
New Aberdour West	5	Tarwathie, Strichen	23
New Aberdour North	5	New Leeds	24
New Aberdour East	5	Brownhill, Fetterangus	25
Peathill	6	North Garmond	26
Fordyce Hill, Fordyce	7	Turriff West	27
Banff West	8	Turriff South	28
Auchlin, Turriff	9	Idoch, Cuminestown	29
Gaval, Fetterangus	10	Craigie, Ythanbank	30
Hatton West	11	Hill of Logie, Ellon	31
Hatton South	11	Old Crow Wood, Monymusk	32
Auchenblae East	12	Cairnie Woods, Garlogie	33
Auchenblae West	12	Criggie, Stonehaven	34
Hill of Kinnoir, Huntly	13	Gallow Hill, Fettercairn	35
Lumsden North	14	Ruthven	36
Kirkton of Durriss	15	Rhynie	37
Auchlin	16	Woodhead, Alford	38
Cotton Hill, Fordyce	17	Tillydrine, Kincardine O’Neil	39

MINERALS - AREAS OF SEARCH

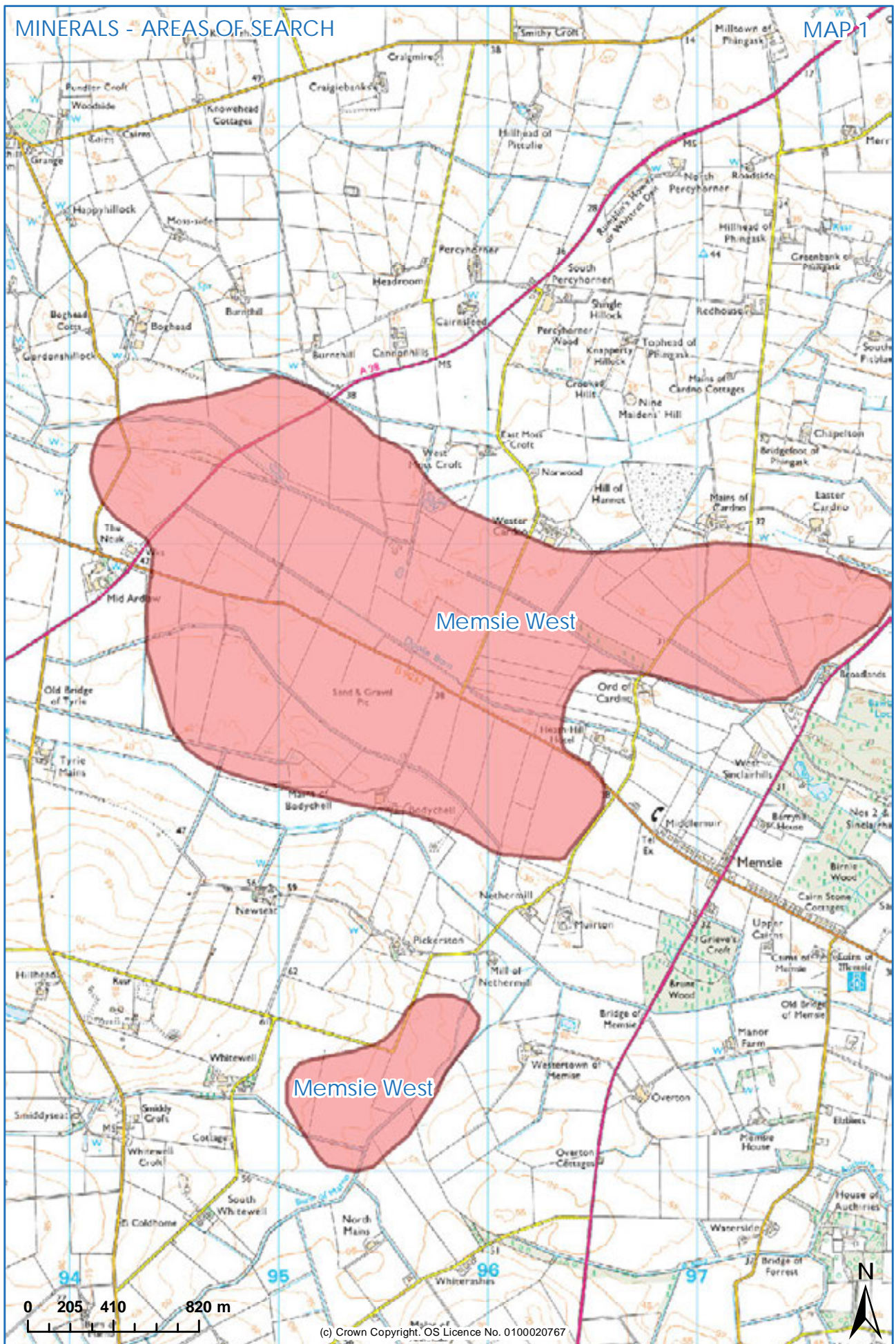
MAP KEY



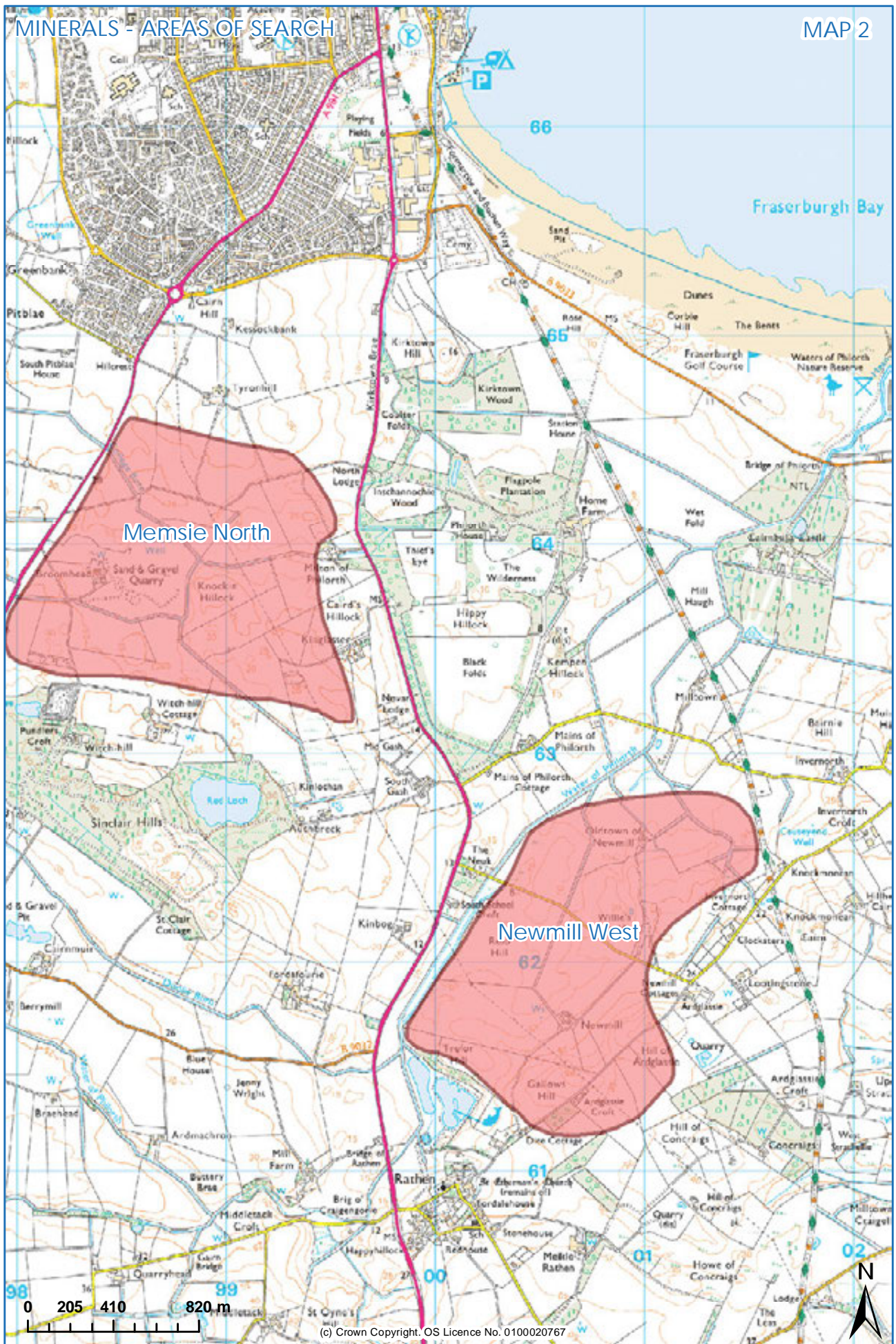
(c) Crown Copyright. OS Licence No. 0100020767

MINERALS - AREAS OF SEARCH

MAP 1

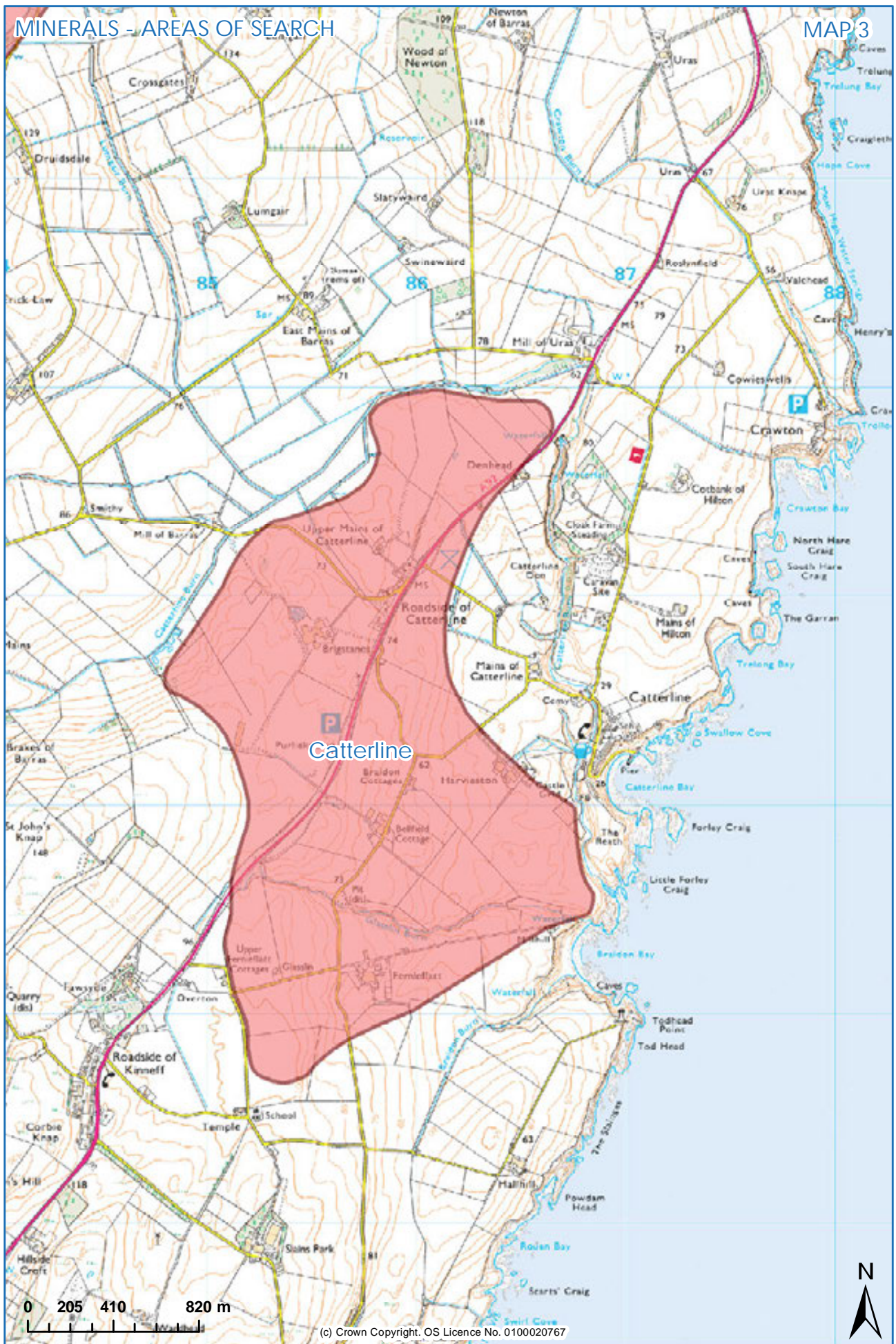


(c) Crown Copyright. OS Licence No. 0100020767



MINERALS - AREAS OF SEARCH

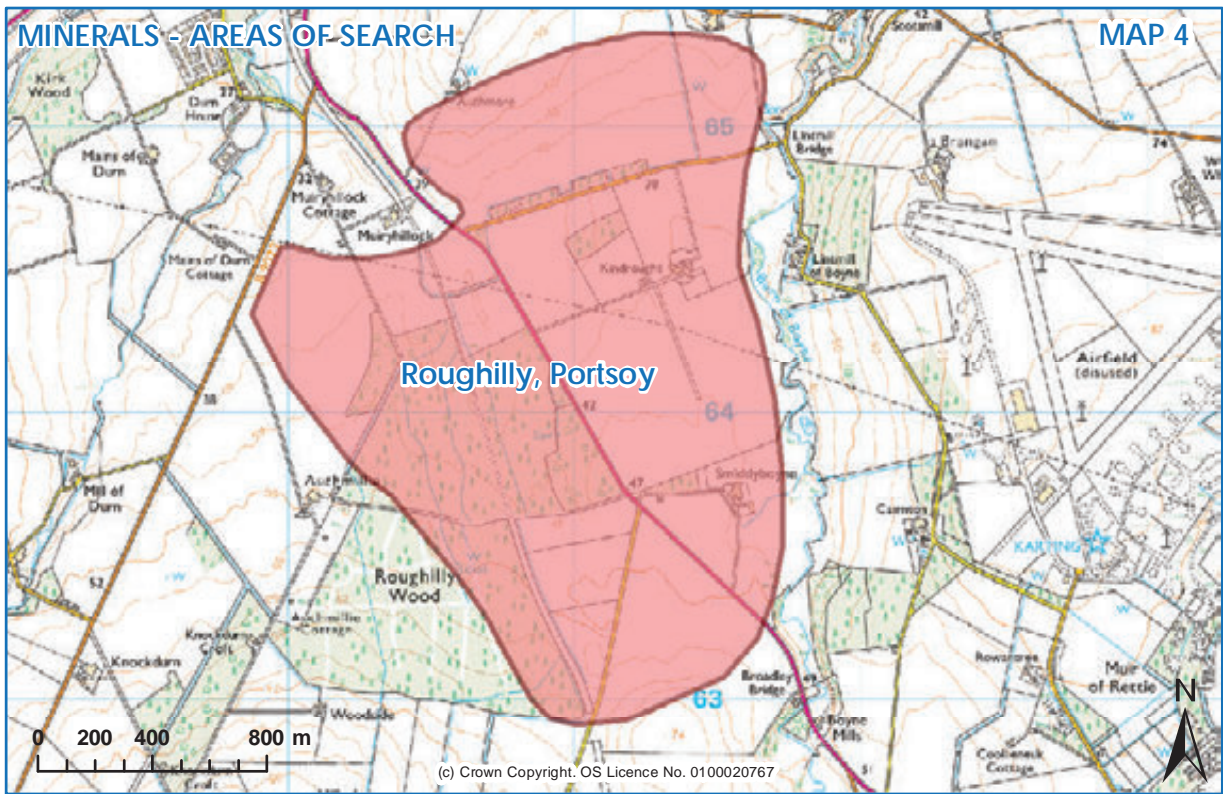
MAP 3



(c) Crown Copyright. OS Licence No. 0100020767

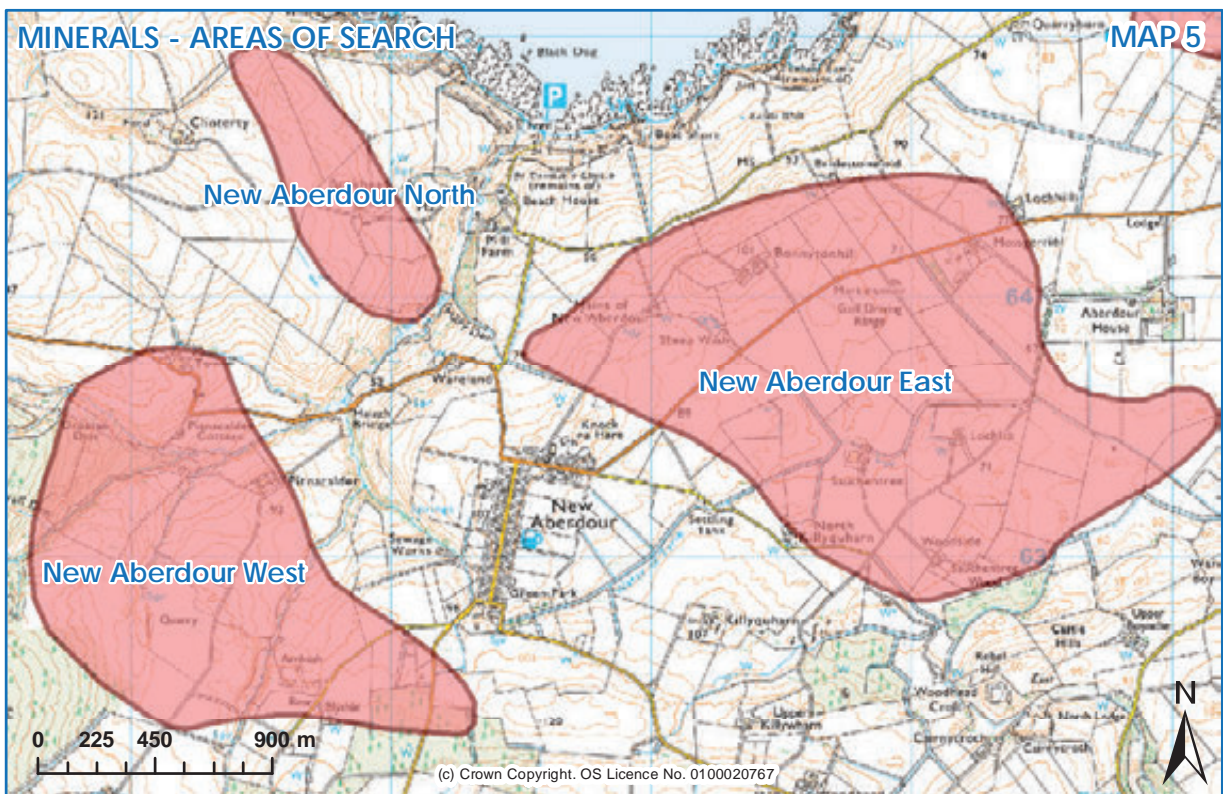
MINERALS - AREAS OF SEARCH

MAP 4



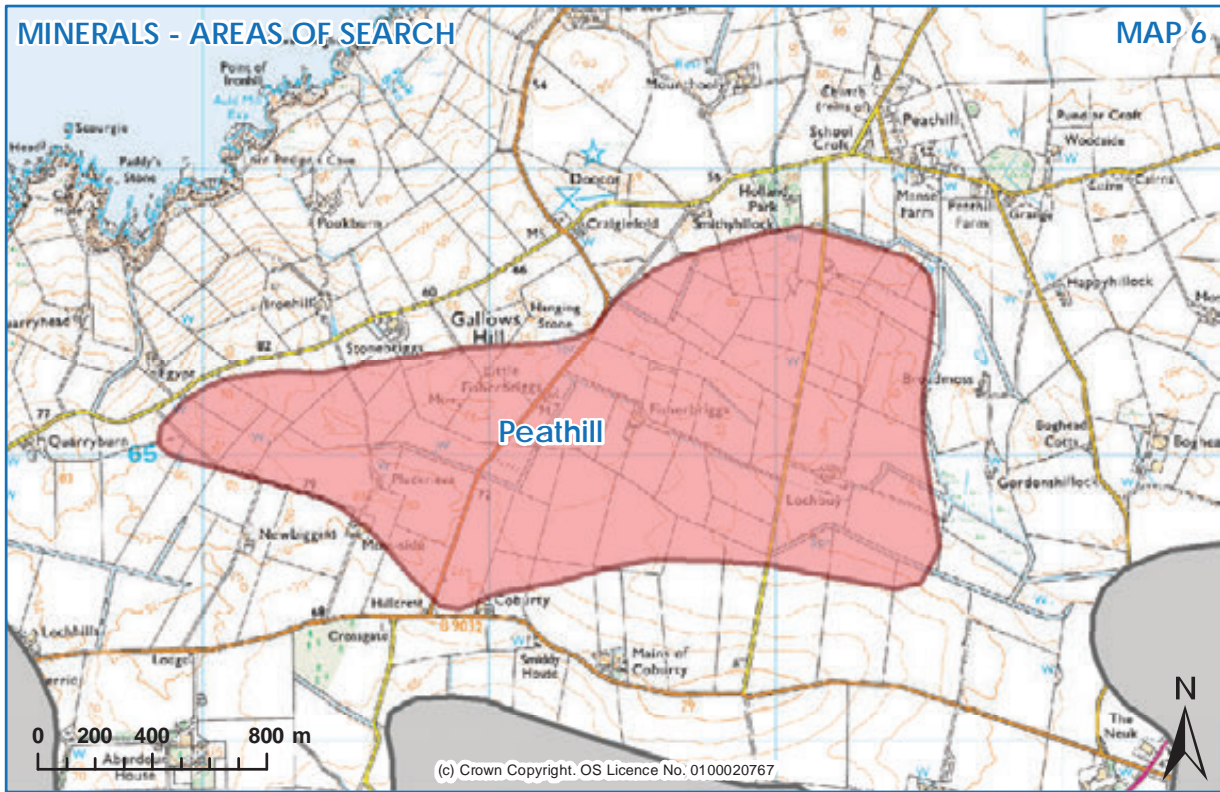
MINERALS - AREAS OF SEARCH

MAP 5



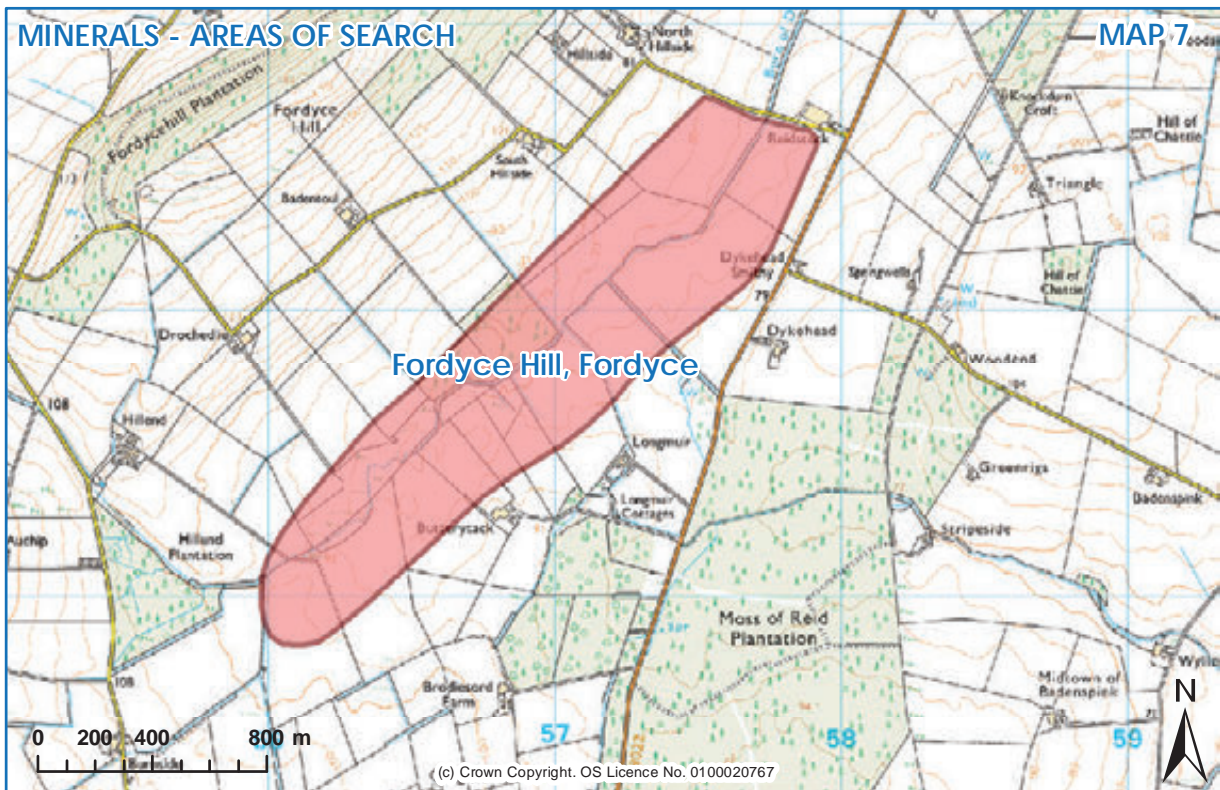
MINERALS - AREAS OF SEARCH

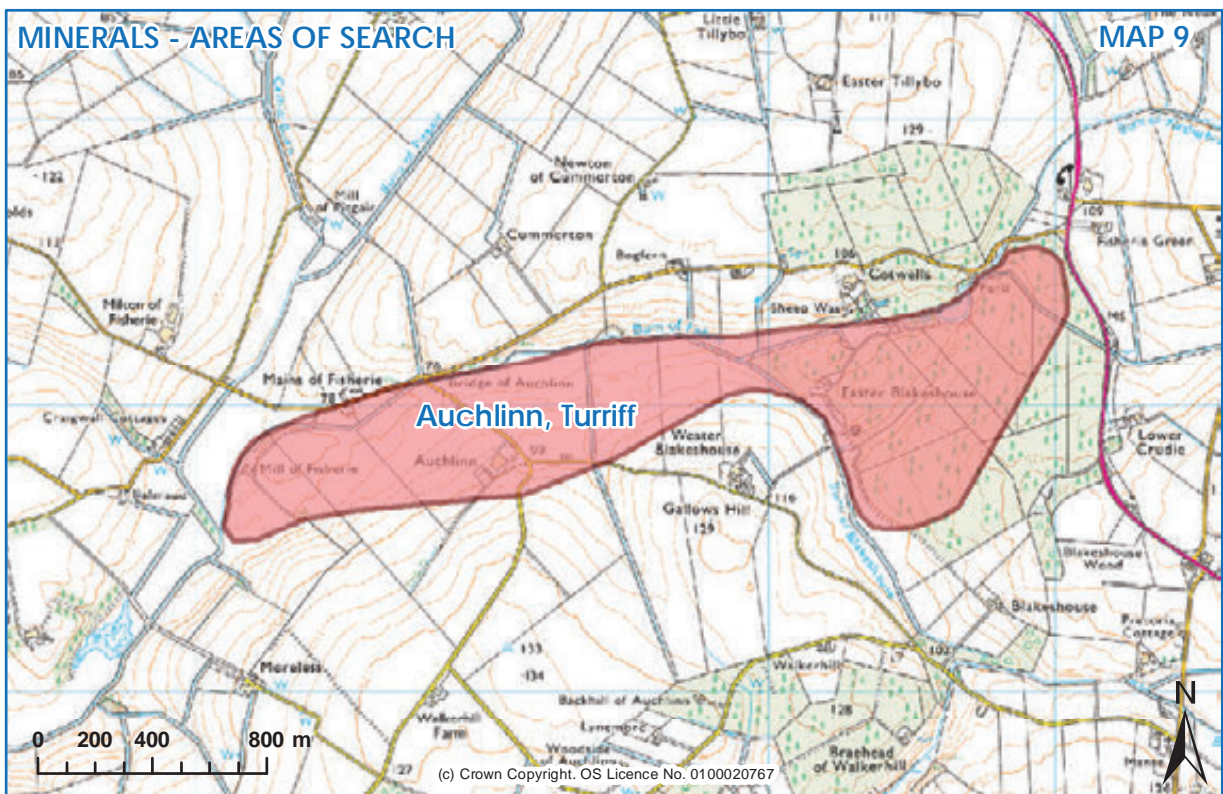
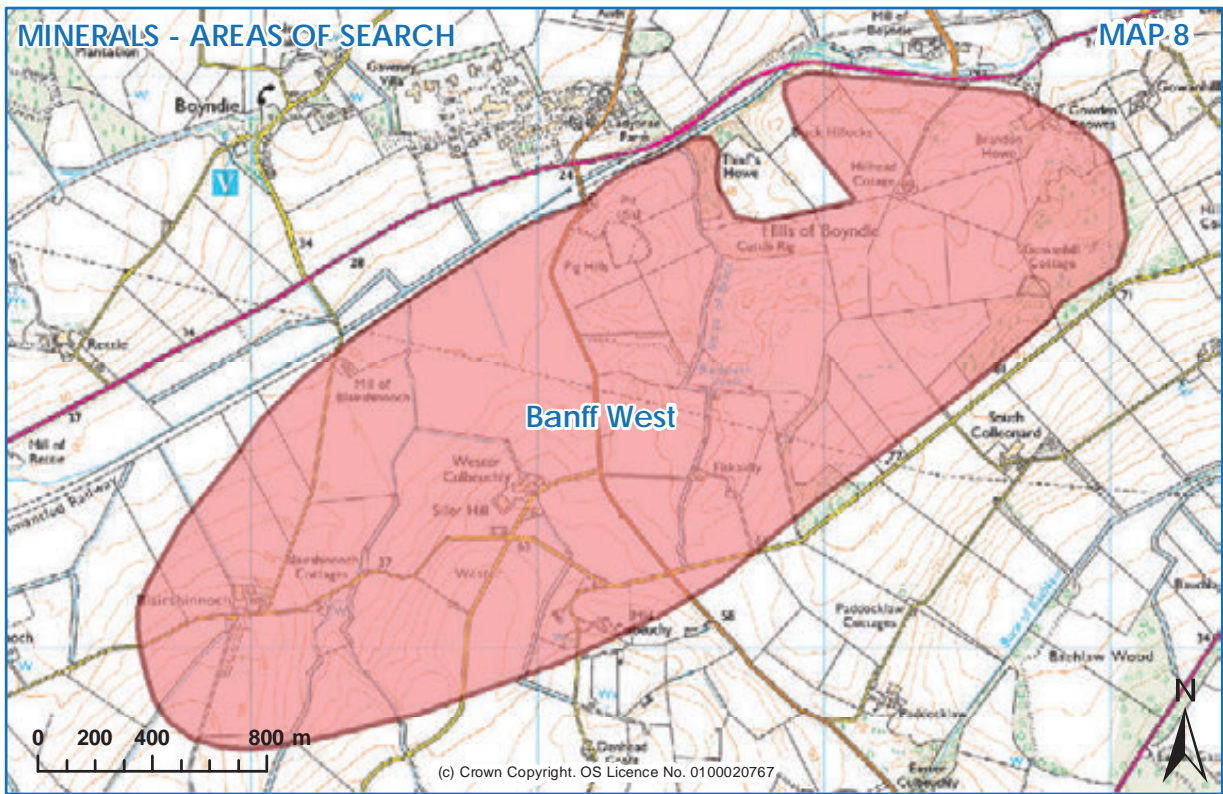
MAP 6

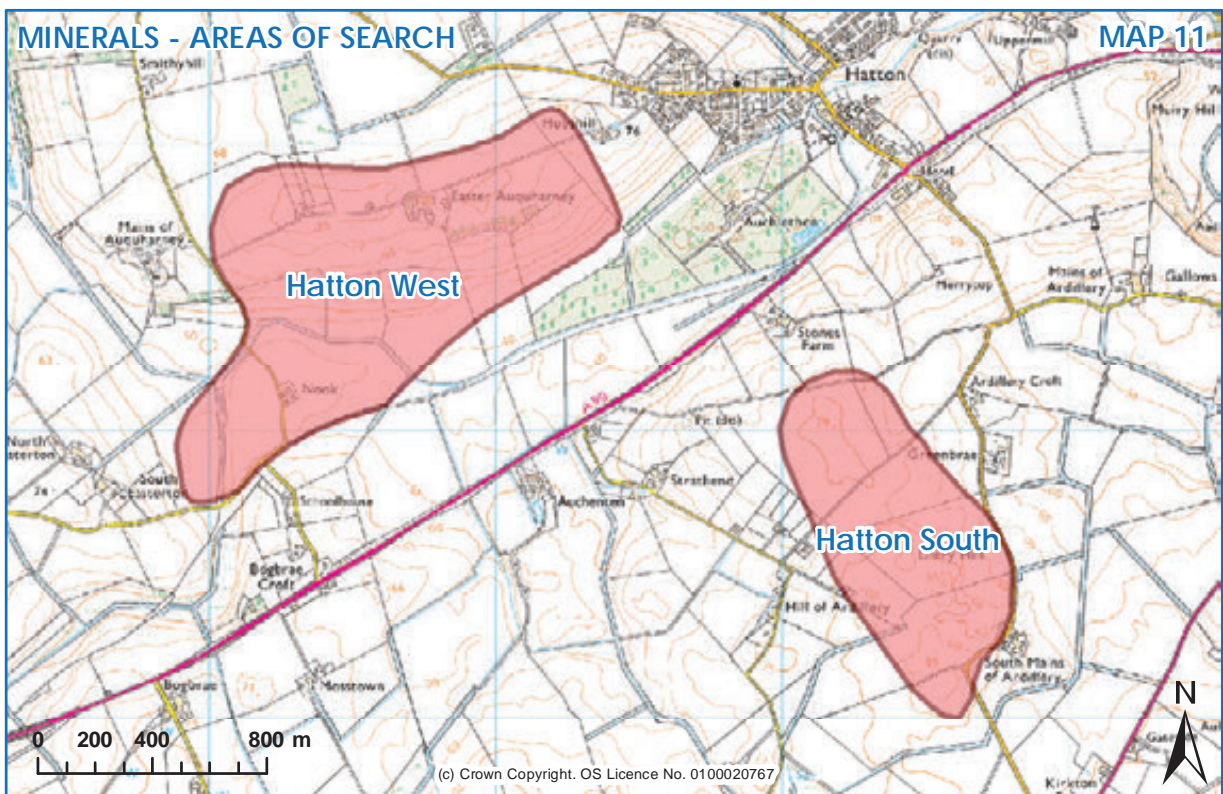
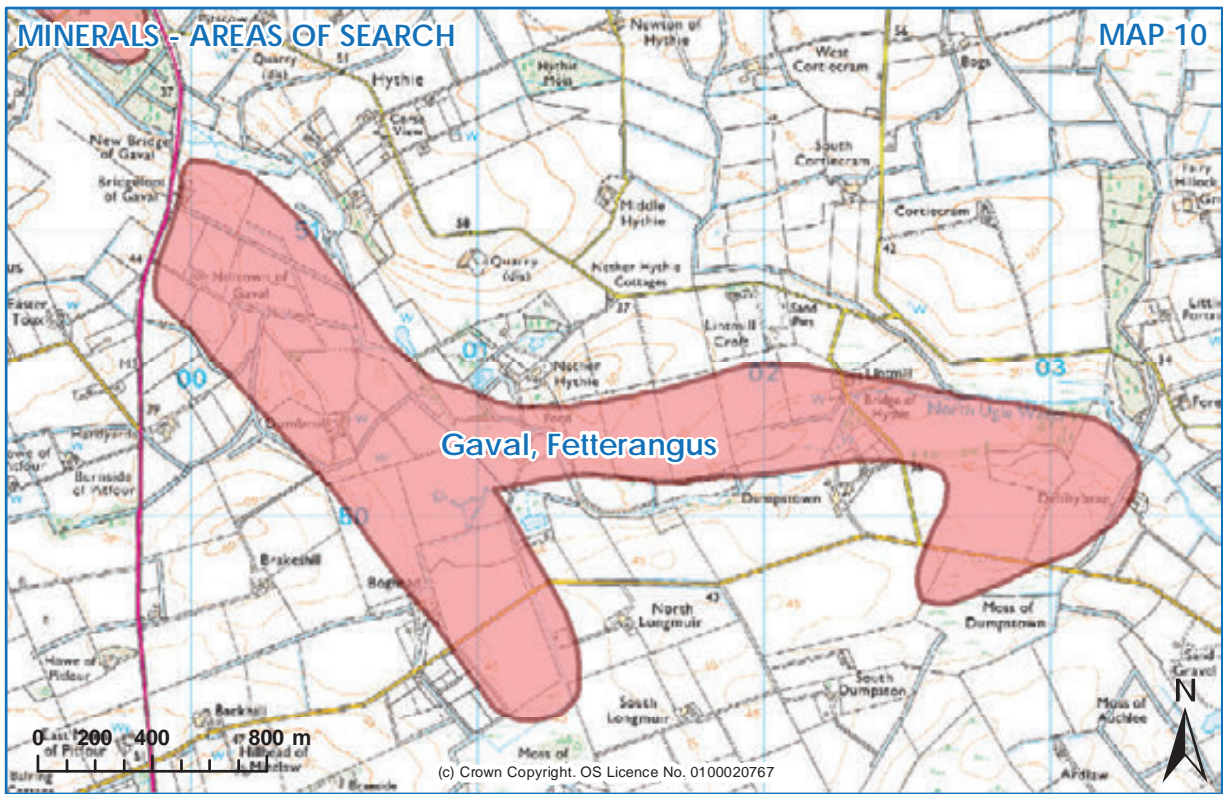


MINERALS - AREAS OF SEARCH

MAP 7

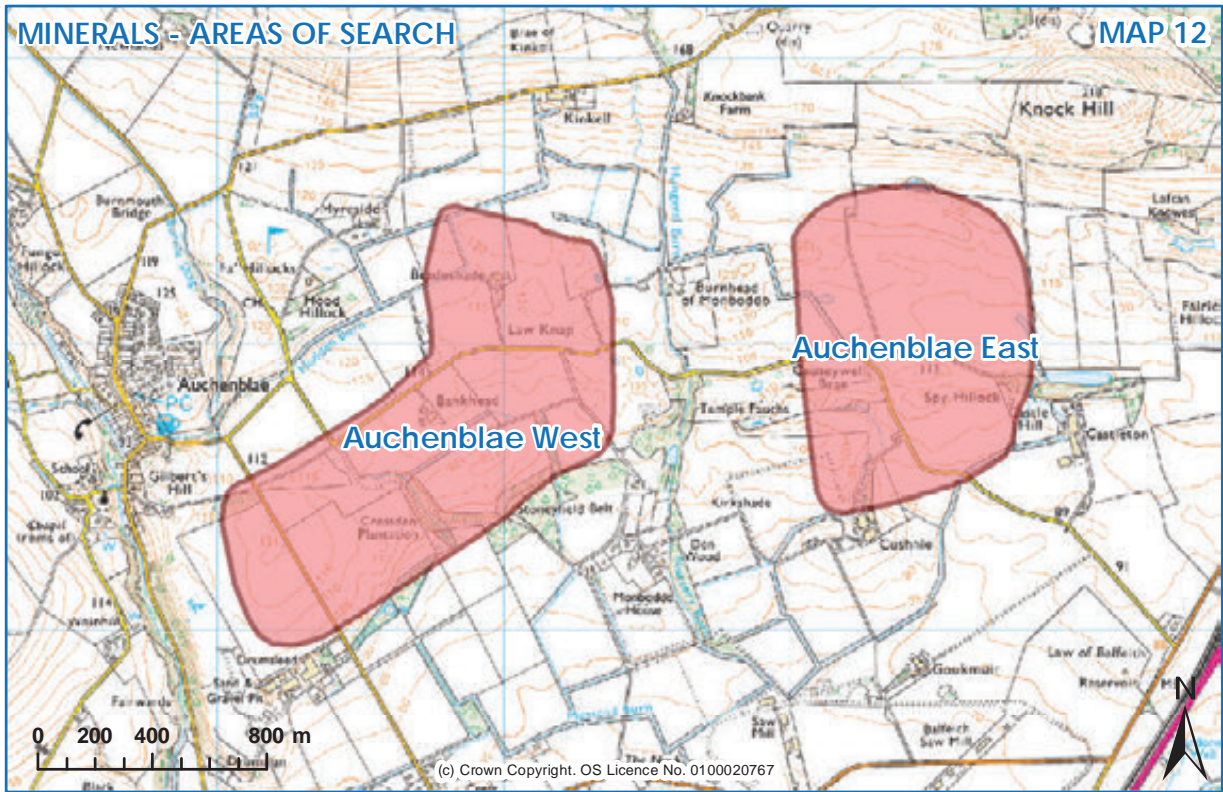






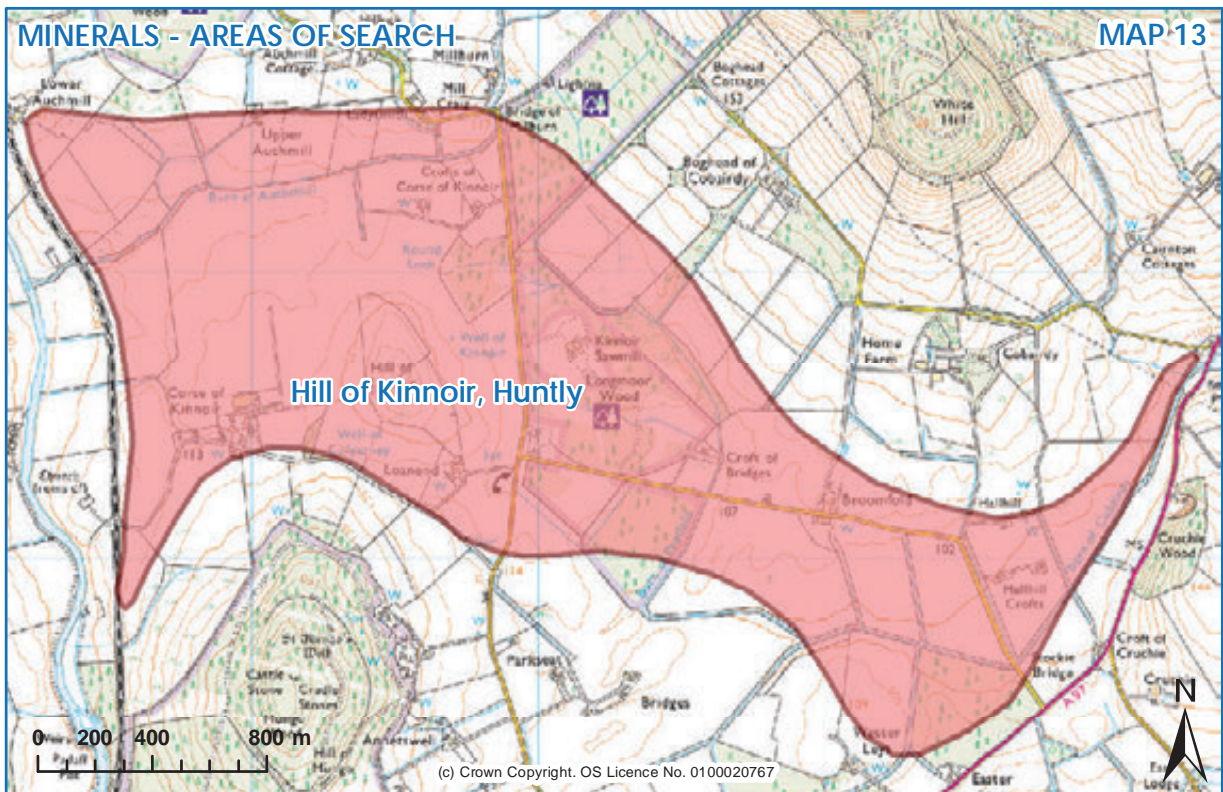
MINERALS - AREAS OF SEARCH

MAP 12



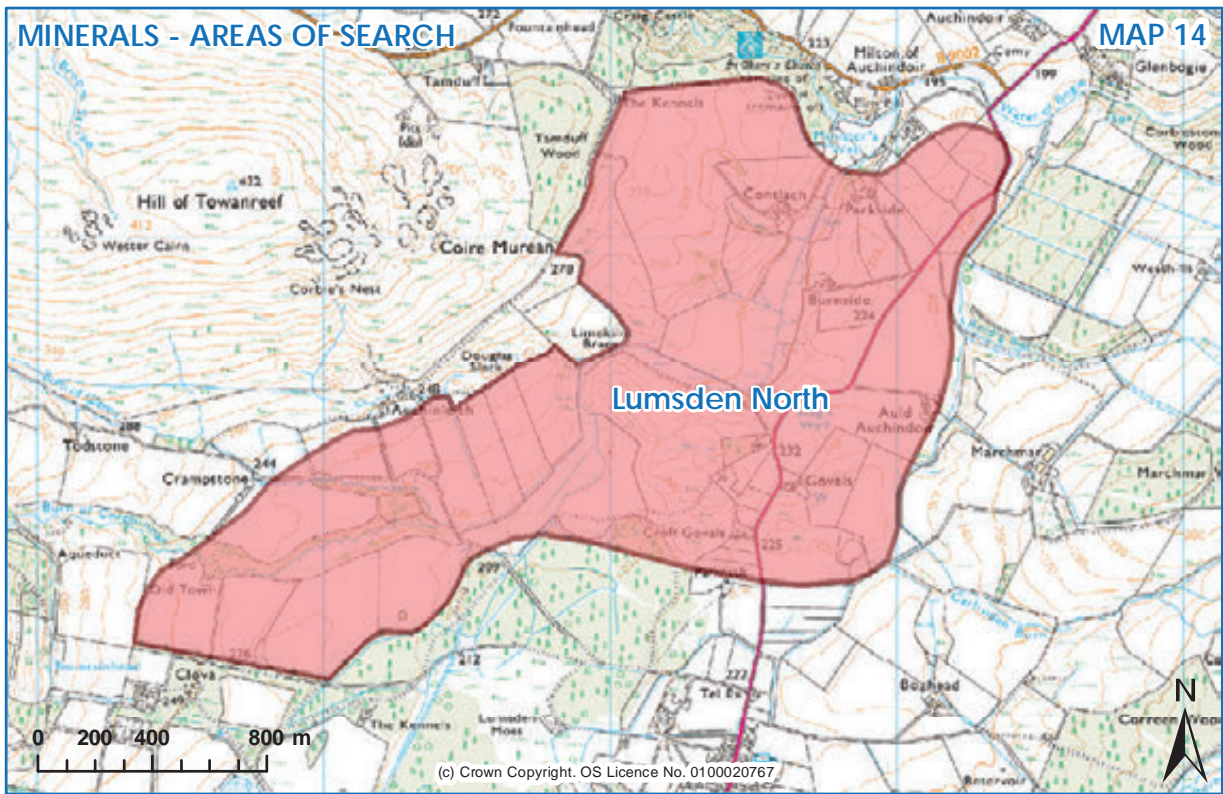
MINERALS - AREAS OF SEARCH

MAP 13



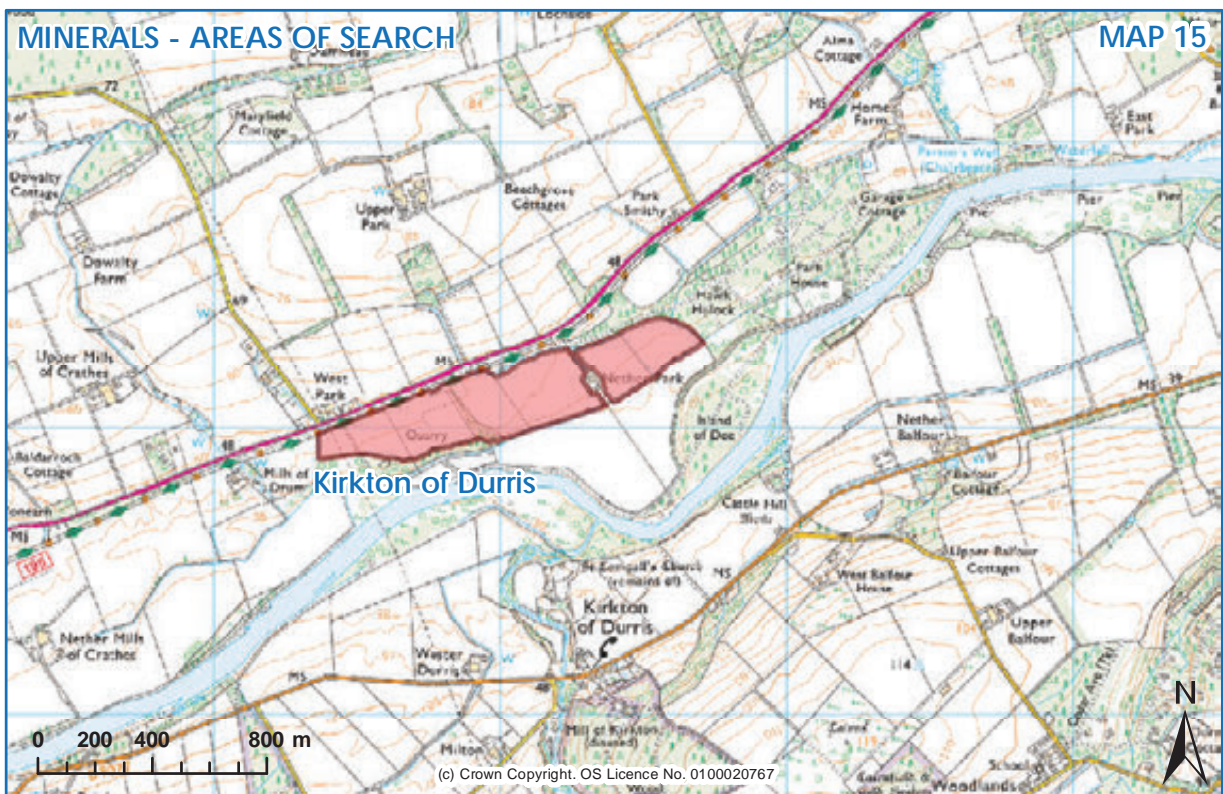
MINERALS - AREAS OF SEARCH

MAP 14

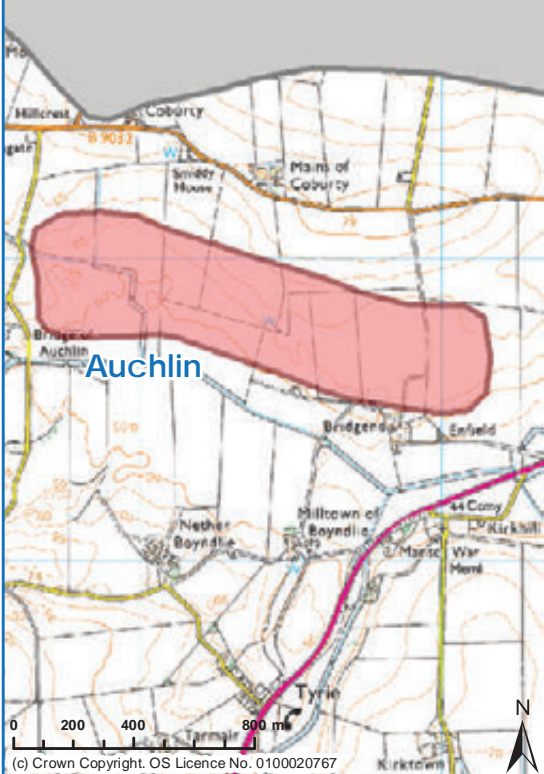


MINERALS - AREAS OF SEARCH

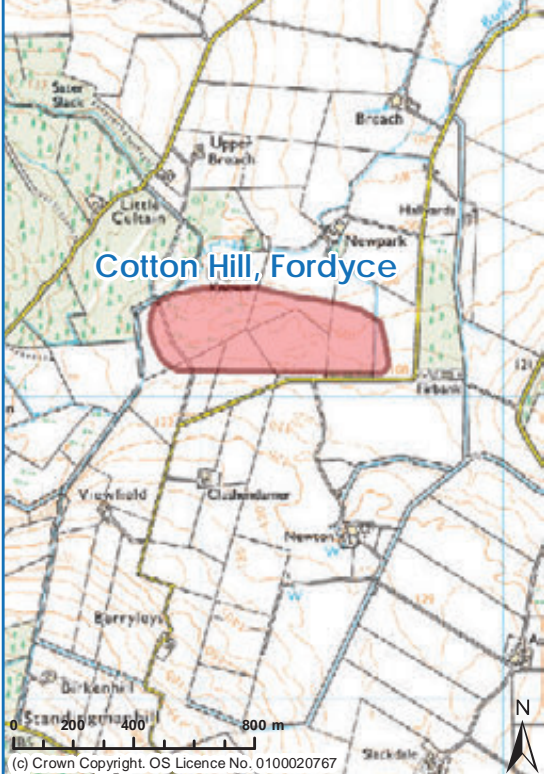
MAP 15



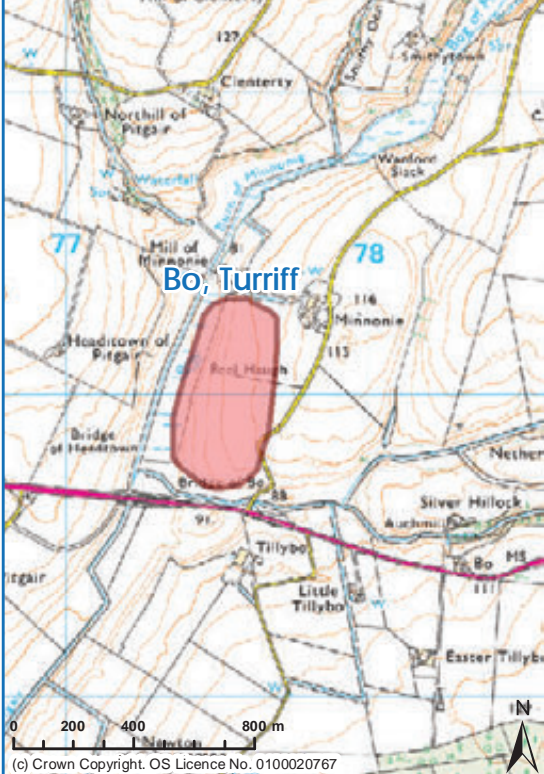
MINERALS - AREAS OF SEARCH MAP 16



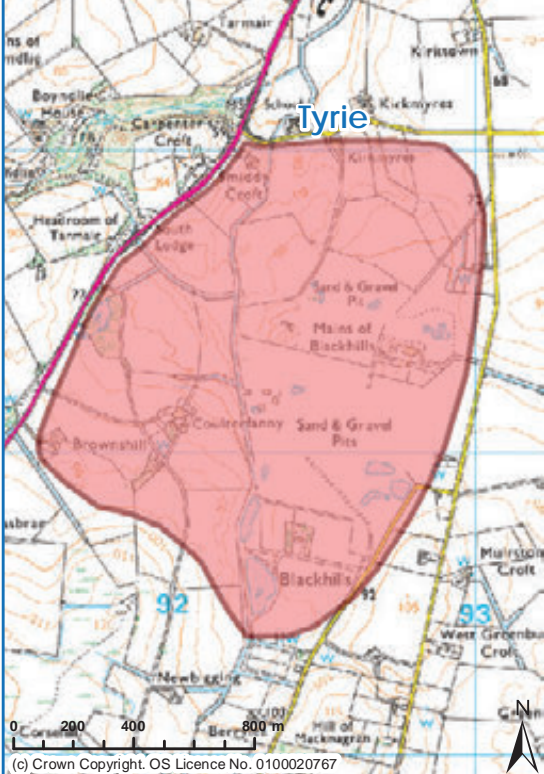
MINERALS - AREAS OF SEARCH MAP 17



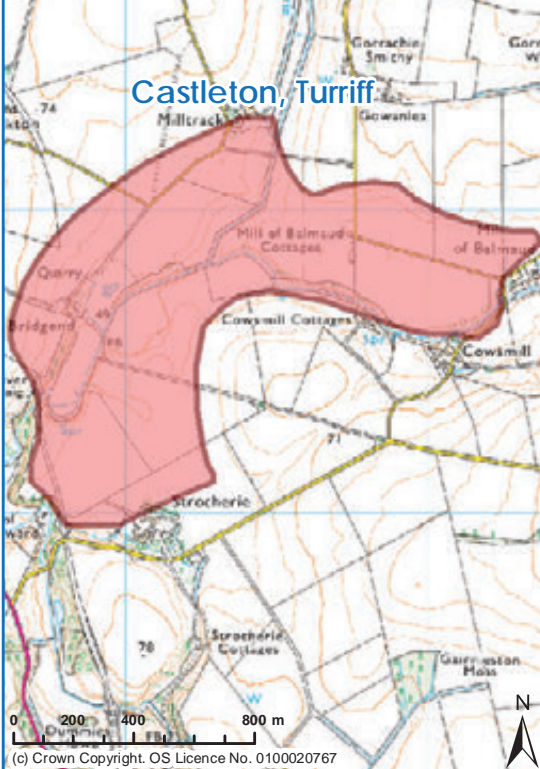
MINERALS - AREAS OF SEARCH MAP 18



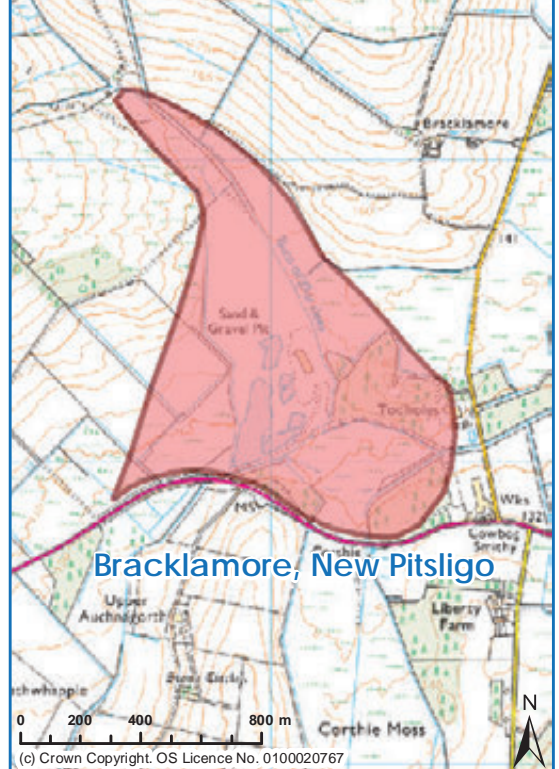
MINERALS - AREAS OF SEARCH MAP 19



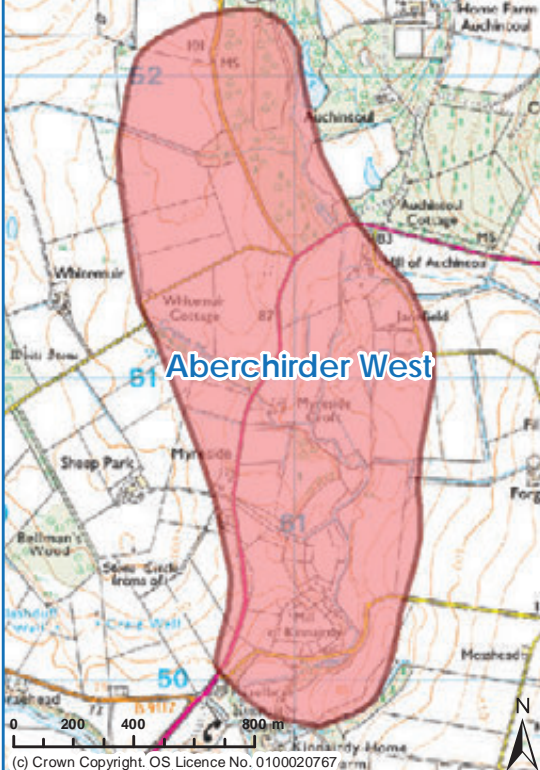
MINERALS - AREAS OF SEARCH MAP 20



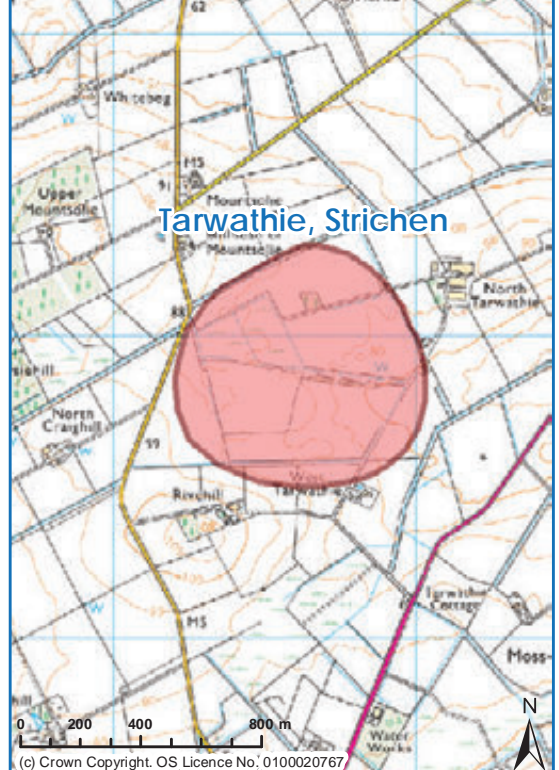
MINERALS - AREAS OF SEARCH MAP 21



MINERALS - AREAS OF SEARCH MAP 22



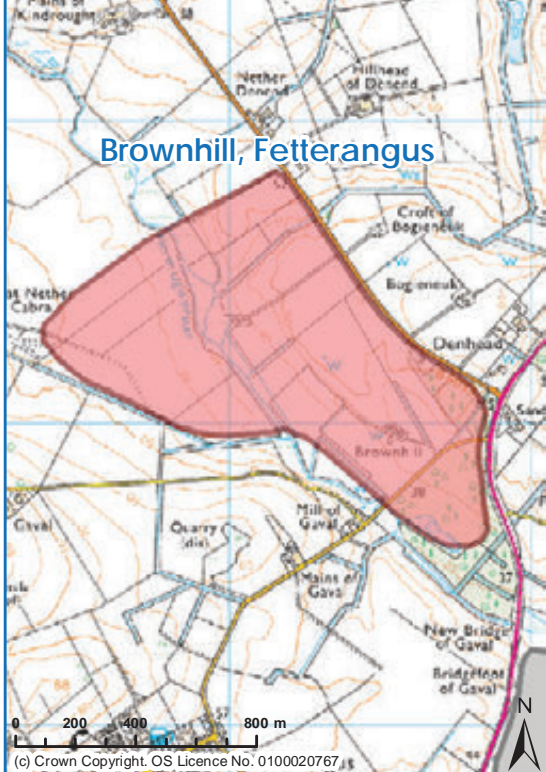
MINERALS - AREAS OF SEARCH MAP 23



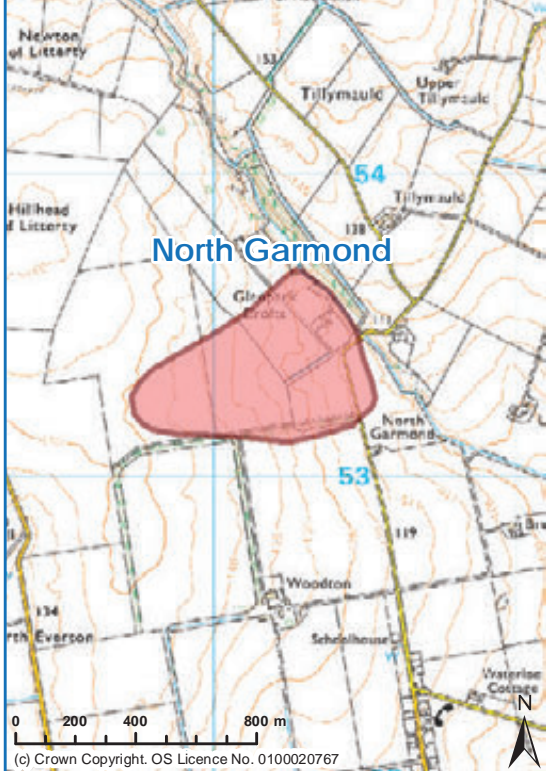
MINERALS - AREAS OF SEARCH MAP 24



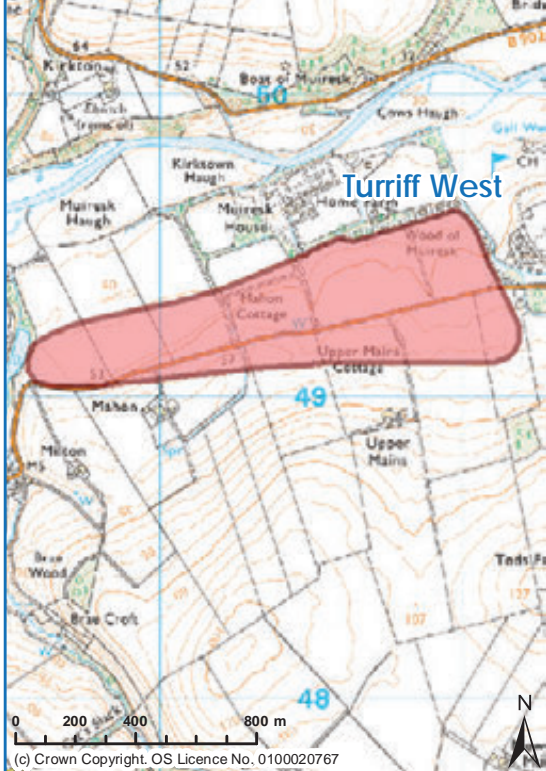
MINERALS - AREAS OF SEARCH MAP 25

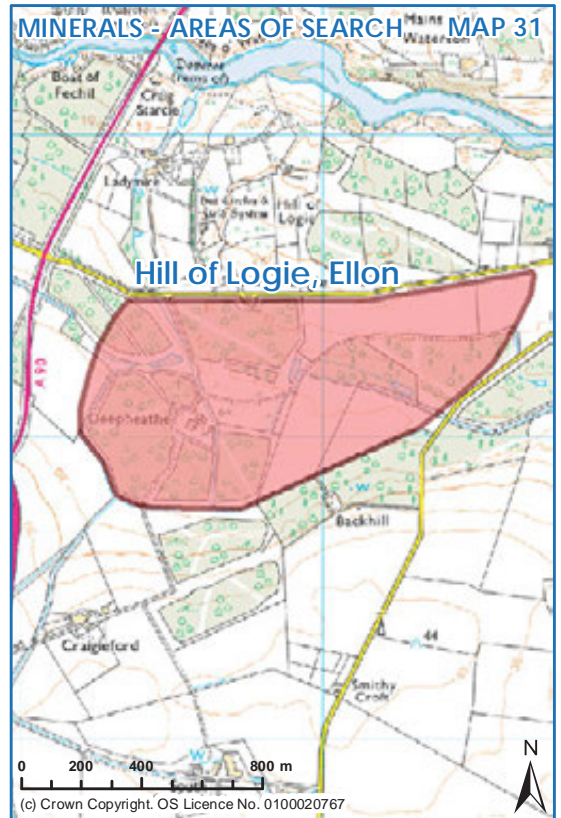
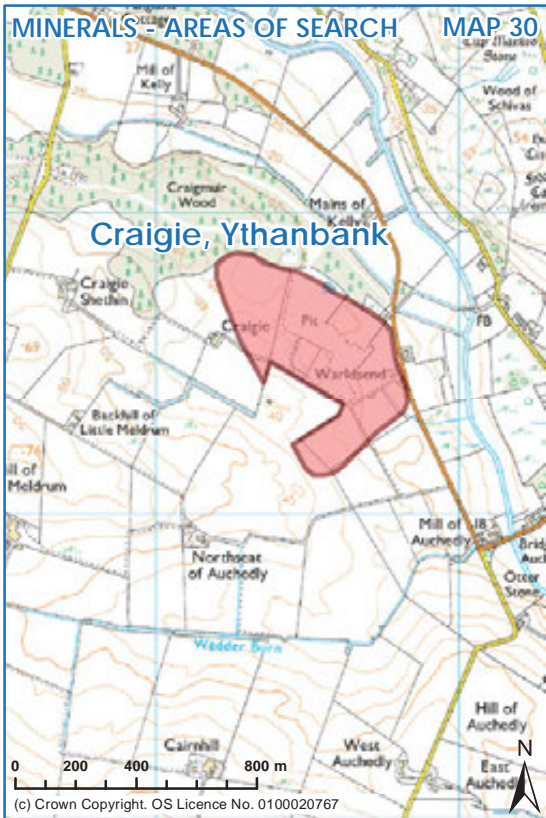
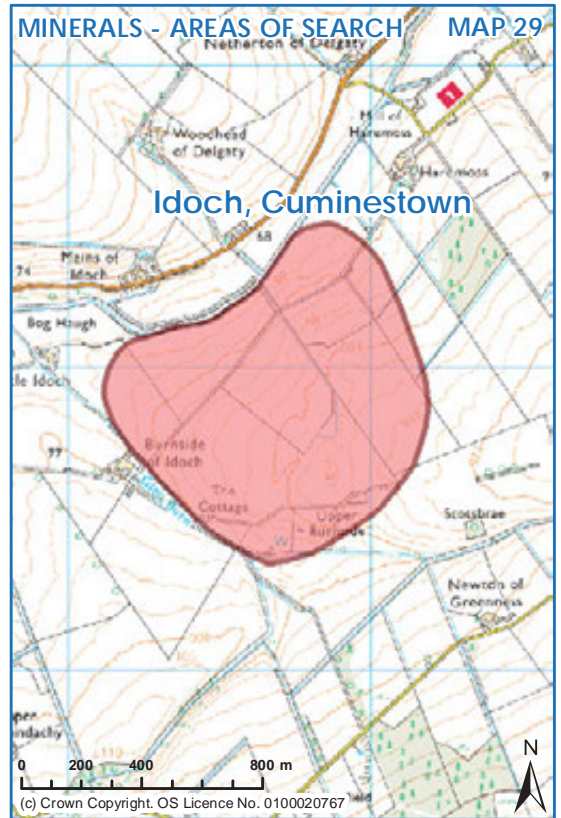
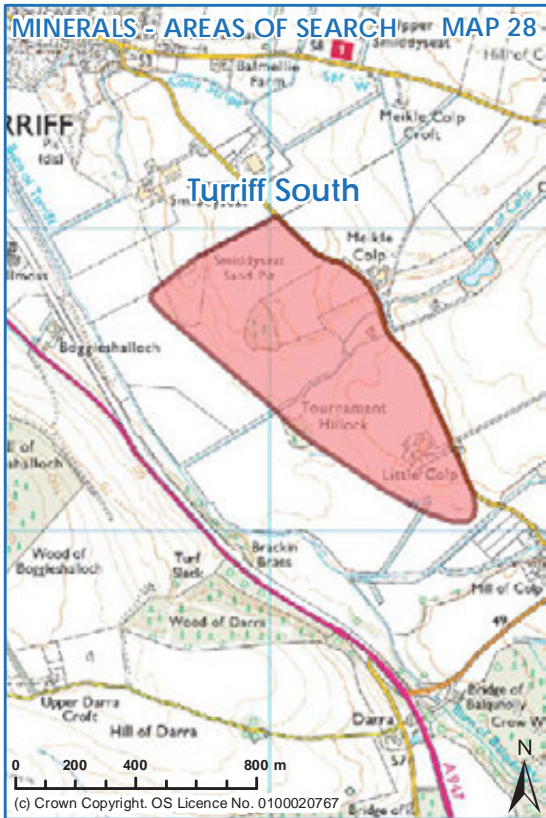


MINERALS - AREAS OF SEARCH MAP 26

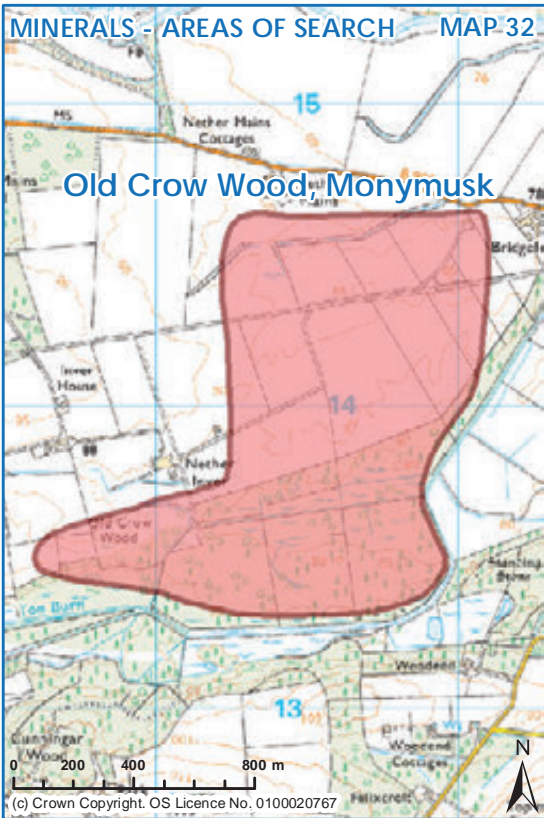


MINERALS - AREAS OF SEARCH MAP 27

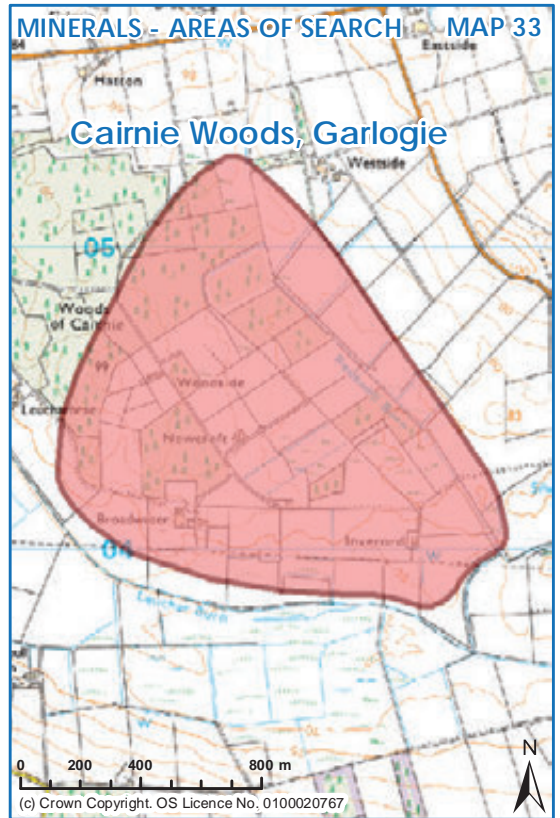




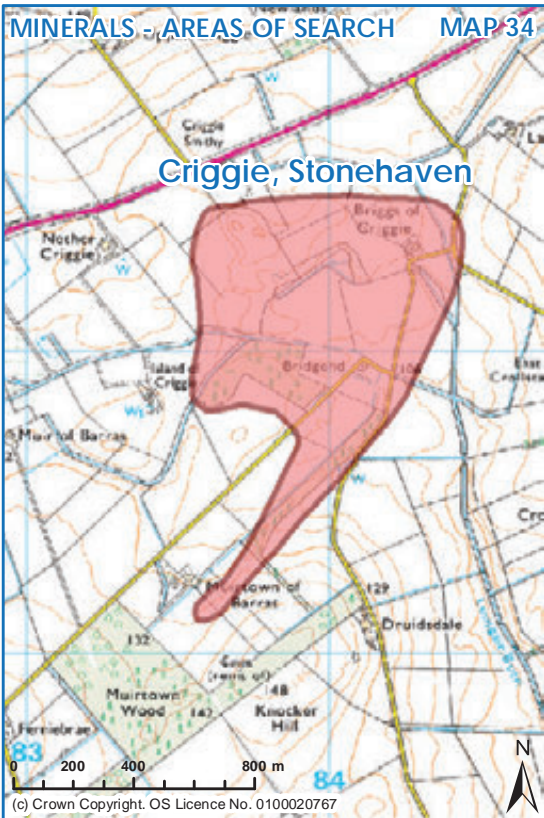
MINERALS - AREAS OF SEARCH MAP 32



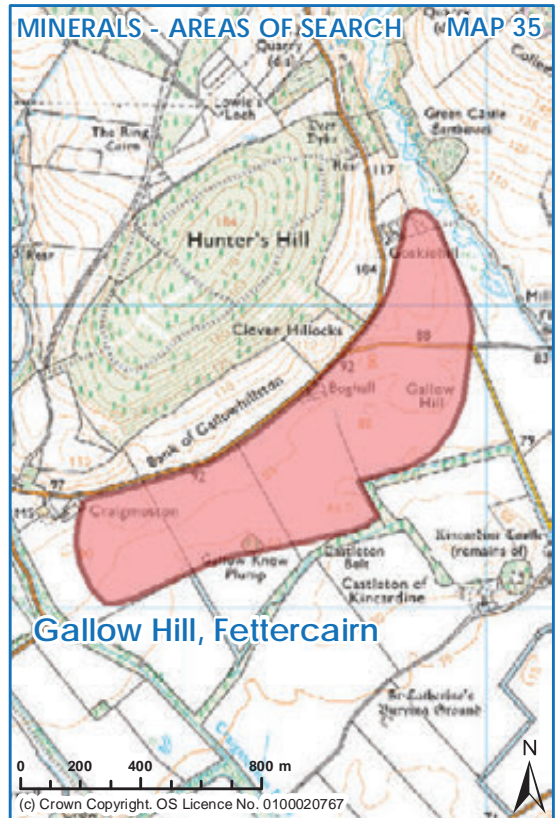
MINERALS - AREAS OF SEARCH MAP 33



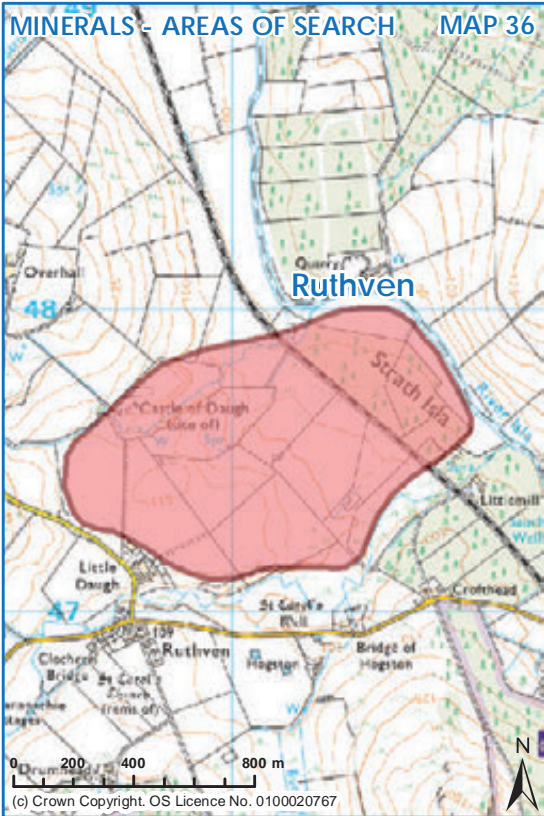
MINERALS - AREAS OF SEARCH MAP 34



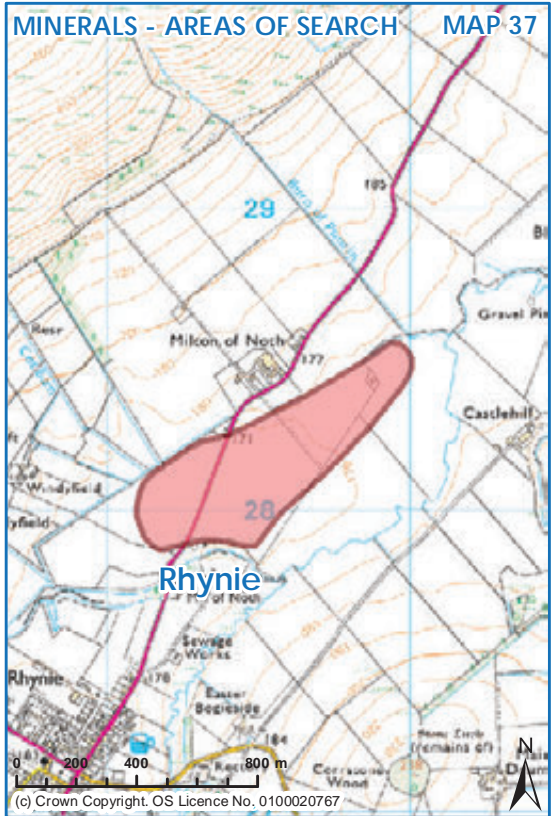
MINERALS - AREAS OF SEARCH MAP 35



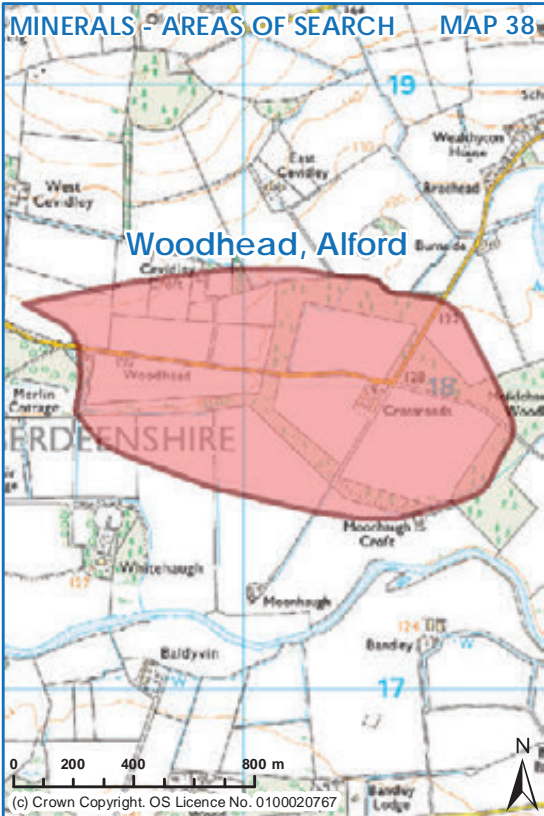
MINERALS - AREAS OF SEARCH MAP 36



MINERALS - AREAS OF SEARCH MAP 37



MINERALS - AREAS OF SEARCH MAP 38



MINERALS - AREAS OF SEARCH MAP 39

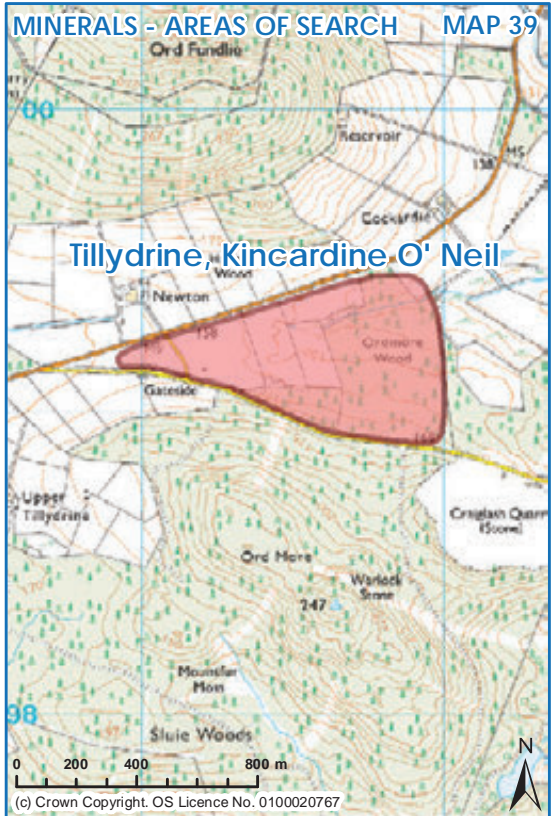


Table 2 Safeguarded mineral resources

Name	Coordinates			Map Number
Arthrath, Ellon	NJ39768372	Commercially viable precious metal deposits	Platinum and Nickel	1
Foudland	NJ 590 327 to NJ 620 340	Large deposits available for further exploitation. Many quarries covered with large tips. Depths of workings greater than other quarries. Access is medium - good track to high level quarries, others distant. Low environ sensitivity as are remote from habitation. Quality varies (poorer between upper and lower level quarries)	slate	2
Paradise, Kemnay	NJ 7377 1693	Disused. Light silver-grey colour, widely exported (e.g. Queen Victoria Memorial, London and Forth Railway Bridge 1885). Used as cladding for Scottish Parliament, Edinburgh (2004).	light silver-grey granite	3
Tom's Forest, Kintore	NJ 762 170	Foliated muscovite-biotite granite. Active, producing crushed rock aggregate	foliated muscovite-biotite granite	3
Corskie, Gartly	NJ 533 328	Historic quarry in slate. Large deposits covering most of the Hill of Corskie. Resources within quarry area estimated as medium assuming no change in quality along strike. Further exploitation possible at greater depth. Medium access, forest roads. Low environ sensitivity as are remote from all habitation.	slate	4
Cottonhill, Macduff	NJ 724 639	Active. Macduff Formation. Crushed rock aggregate	Macduff Formation (metamorphic)	5
Peathill, New Pitsligo	NJ 8872 5504	Historic quarries used for building. Light grey, porphyritic granite	light grey porphyritic granite	6
Aikey Brae, Old Deer	NJ 96244781	Disused. Pink and grey speckled granite	pink and grey speckled granite	7

Name	Coordinates			Map Number
Cairngall, Longside	NK 052 471	Disused. 'Blue Peterhead', muscovite-biotite granite, some of the rock foliated, was widely used for decorative work and large monoliths.	Blue Peterhead' muscovite-biotite granite	8
Savock, Longside	NK 066 425	Active. Collieston Formation. Crushed rock aggregate, armourstone and other products (sub base).	Collieston Formation (metamorphic)	9
Stirlinghill (Admiralty No 1), Peterhead	NK 1230 4150	Active. Peterhead Granite. Pink with grey granite. Historic quarry, now producing aggregate and building stone.	pink with grey 'Peterhead Granite'	10
Blackhills, Longhaven, Peterhead	NK 1150 3920	Active, producing crushed rock aggregate and dimension stone. Peterhead Granite, reddish-brown colour, widely exported during 19th century, throughout UK and abroad (e.g. Calton Club, London)	red-brown 'Peterhead Granite'	11
Smiddyburn, Cross of Jackston	NJ 738 331	Active. Macduff Formation. Crushed rock aggregate	Macduff Formation (metamorphic)	12
Woodlands, Old Meldrum	NJ 796 328	Active. Macduff Formation. Crushed rock aggregate, roadstone and other products.	Macduff Formation (metamorphic)	13
Balmedie, Belhelvie	NJ 944 181	Active, Gabbro and norite. Belhelvie Basic Intrusion. Crushed rock aggregate and other products (coated roadstone, sub-base)	gabbro and norite of the Belhelvie Basic Intrusion	14
Pitcaple, Inverurie	NJ 729 268	Active. Norite and gabbronorite (Insch Mass). Crushed rock aggregate, coated roadstone, sub base.	Norite and Gabbronorite of the Insch Mass	15
Lochhills, Parkhill		Active aggregate quarry		16
Corrennie, Tillyfourie	NJ 6415 1192	Active. Currently producing crushed rock aggregate, dimension stone, and armourstone. Distinctive red-pink colour with aligned fabric; stone was widely exported (e.g. Glasgow Municipal Buildings, 1887)	red-pink granite	17
Tillyfourie, Tillyfourie	NJ 6457 1285	Extensive disused workings in grey granite.	grey granite	17

Name	Coordinates			Map Number
North Mains, Findon	NO 9425 9862	Active	granite	18
Mains of Balfour, Fettercairn	NO3622 7735	Sandstone, Teith Formation	Sandstone	19
Pitcarry, Inverbervie	NJ38267739	Sandstone	Catterline formation	20
Forth Hill, Laurencekirk	NJ3771`7698	Sandstone, Scone Formation	Sandstone	21
Littlemill, Ruthven		Commercially viable precious metal deposits	Platinum and Nickel	22
Avochie, Milton of Rothiemay	NJ54194702	Active. Granite. Producing crushed rock aggregate and building stone	foliated biotite granite	23
Kirkney, Gartly	NJ 503 317 to NJ 510 320	Historic quarry in slate worked superficially. Very large deposits. Resources at least medium in size. Further extraction possible along strike ENE 075deg, assuming no change in quality. Further exploitation possible to greater depth. Second, less significant set of workings on south of hill at 350m. Main workings situated on north slopes. Poor access, no roads. Low environ sensitivity.	slate	24
Wishach, Gartly	NJ 577 331 to NJ 579 334	Historic quarry in slate. Large (Plenty) of resources for future exploration within the confines of each quarry and continuing along strike. Poor access, no road, but close forestry road although dense vegetation. Low environ sensitivity as are remote.	slate	25
Quarry Hill, Rhynie	NJ 4913 2543		Quarry Hill Sandstone Formation (white, cemented freestone)	26
Quarryfield, Kildrummy	NJ 4543 1837	White, well-cemented freestone used extensively for building in the district	Quarry Hill Sandstone Formation (white, cemented freestone)	27

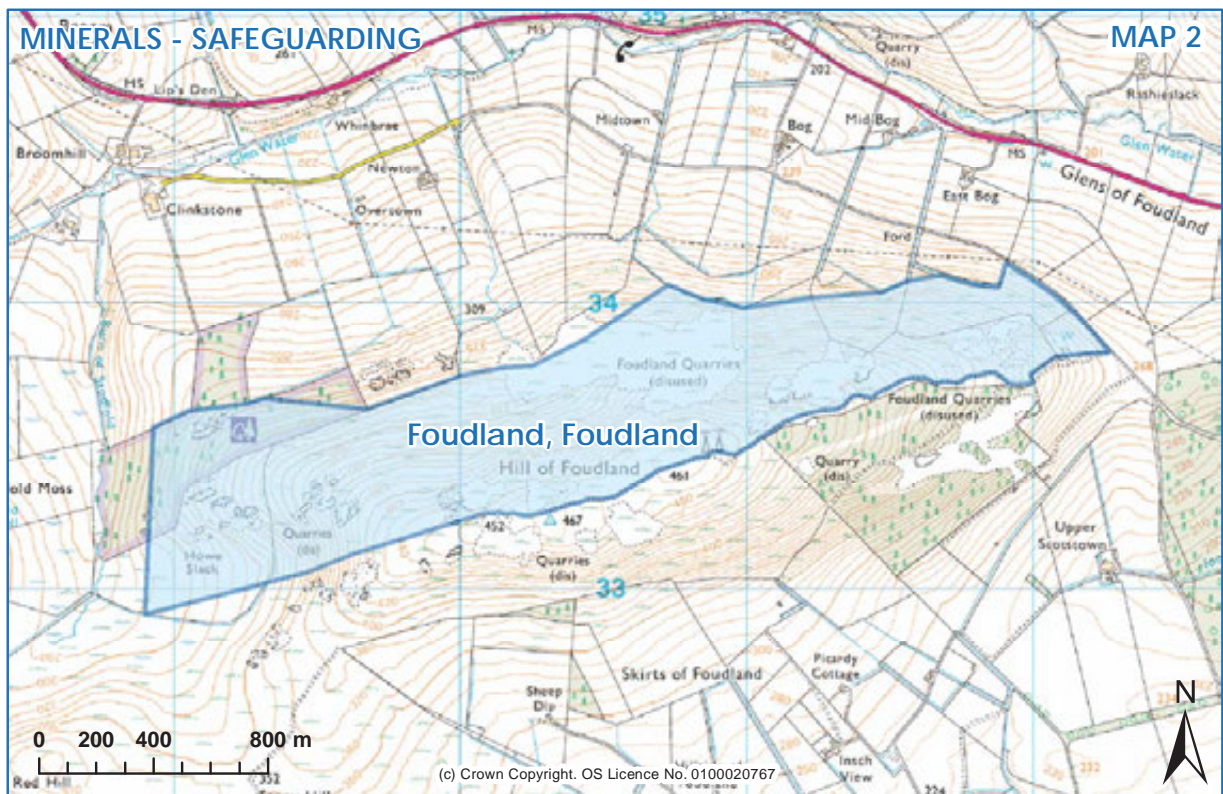
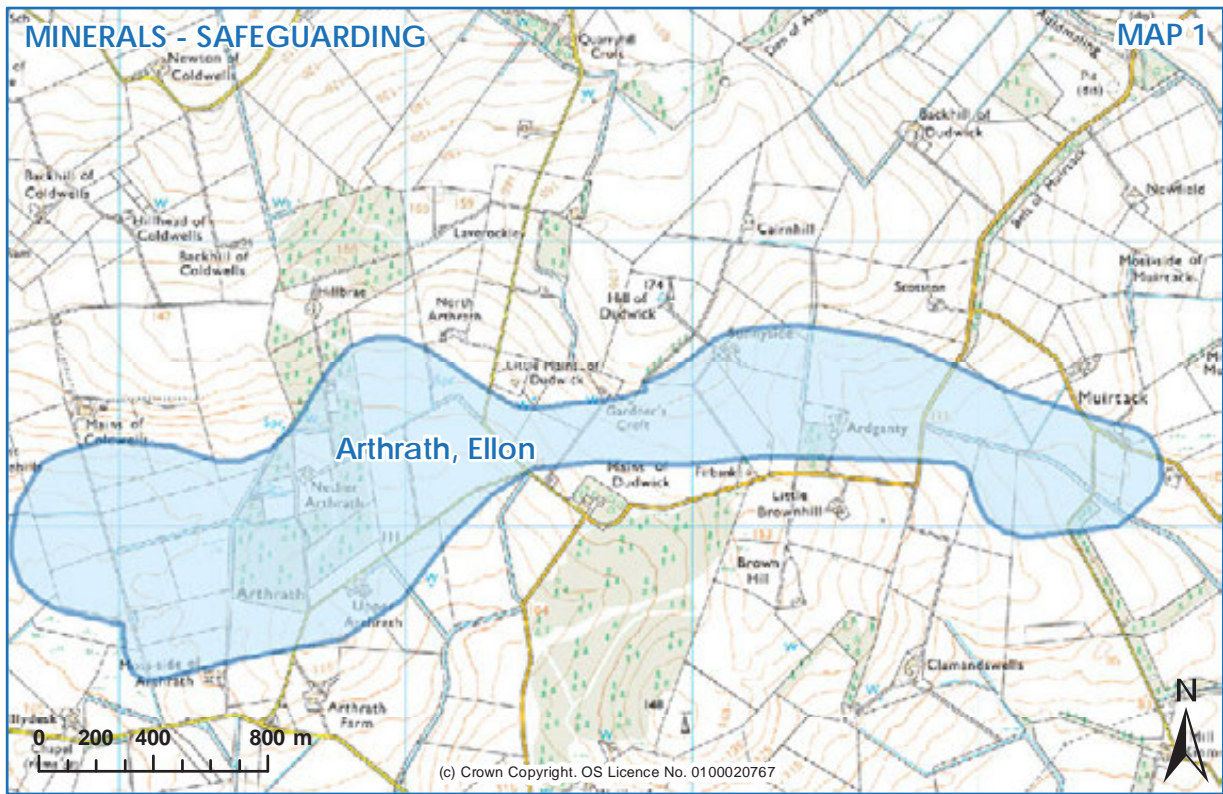
Name	Coordinates			Map Number
Craighash, Kincardine O'Neil	NO 621 987	Active. Queens Hill Formation. Crushed rock aggregate and other products (sub base, sea defences, coated roadstone)	Queens Hill Formation (metamorphic)	28
Skares, Foundland	NJ 590 327 to NJ 620 340	Large deposits available for further exploitation. Many quarries covered with large tips. Depths of workings greater than other quarries. Access is medium - good track to high level quarries, others distant. Low environ sensitivity as are remote from habitation. Quality varies (poorer between upper and lower level quarries)	slate	29

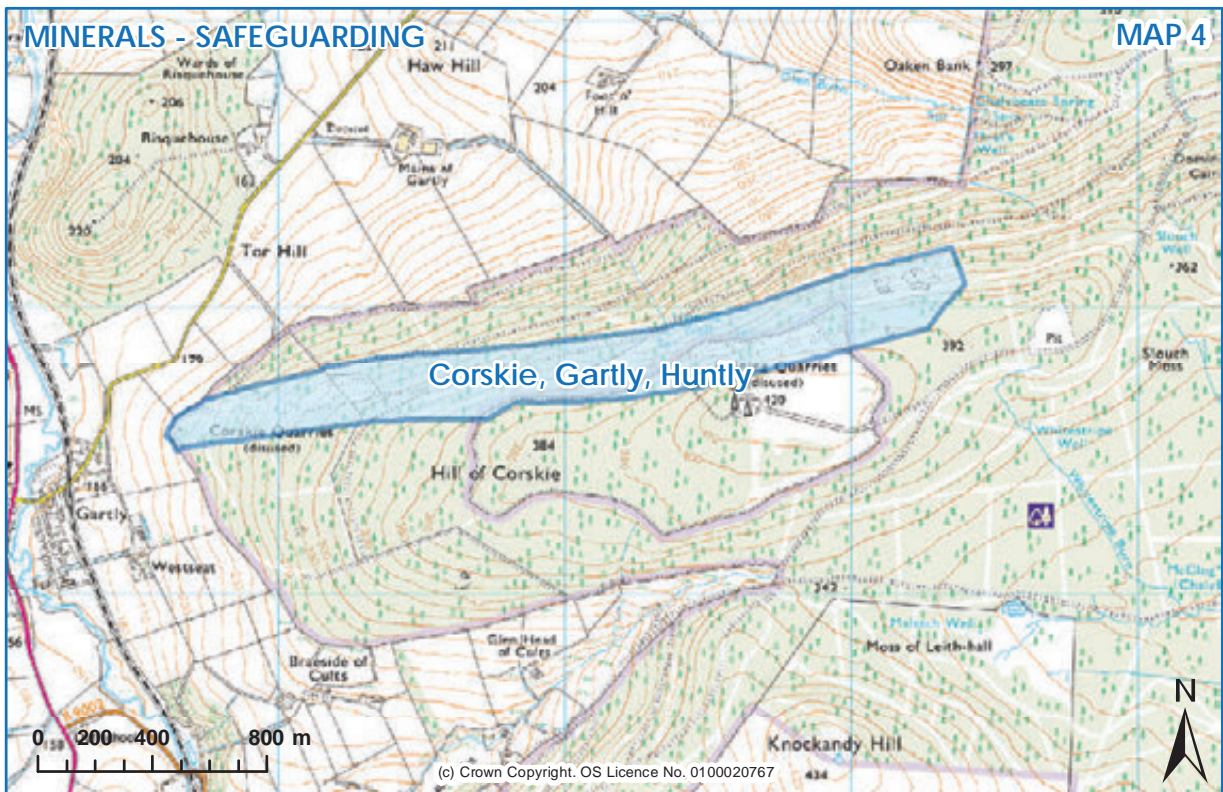
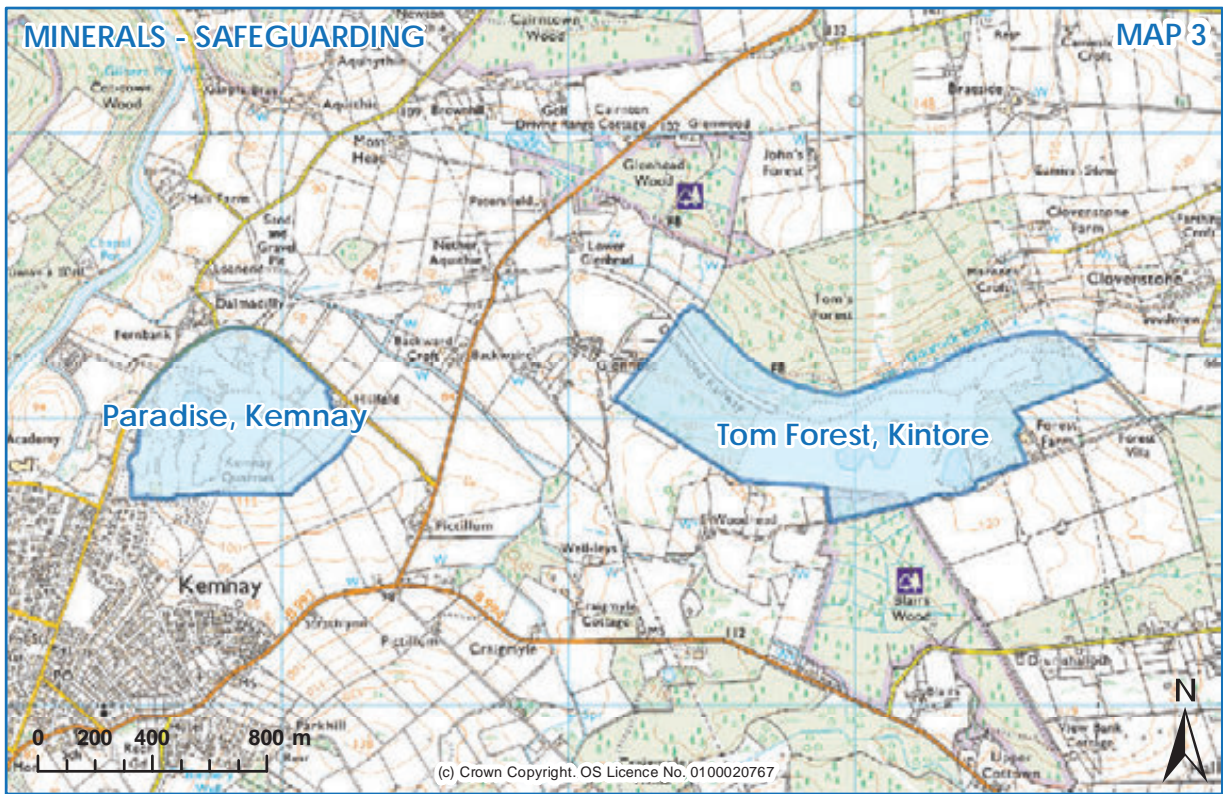
MINERALS - SAFEGUARDING

MAP KEY



(c) Crown Copyright. OS Licence No. 0100020767

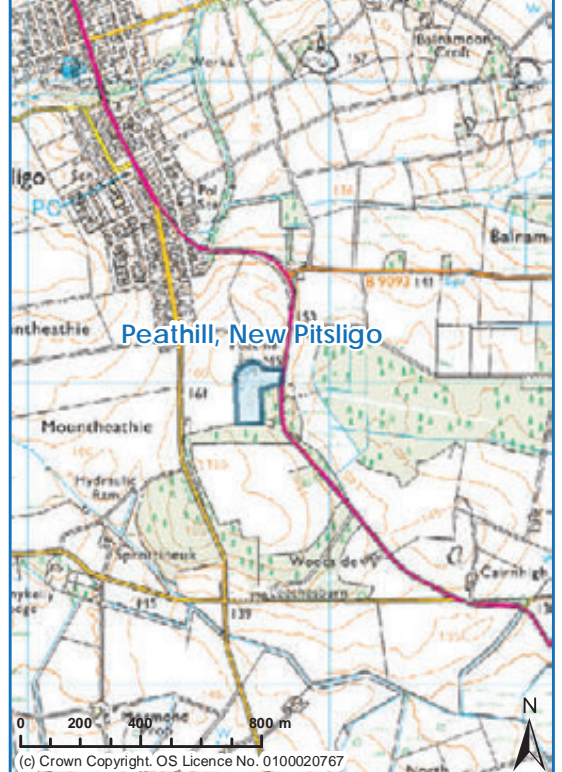




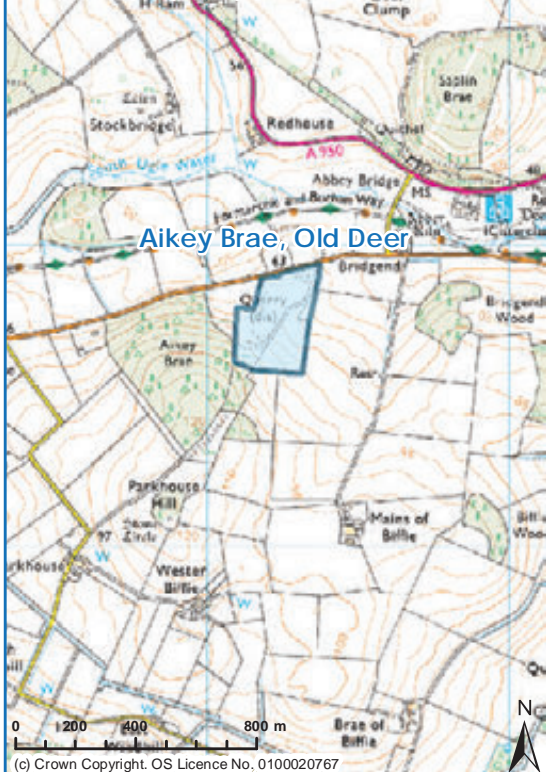
MINERALS - SAFEGUARDING MAP 5



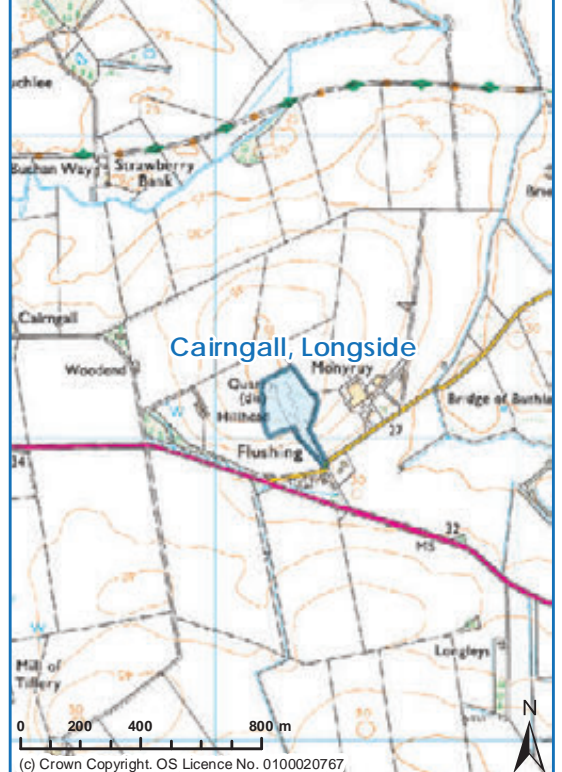
MINERALS - SAFEGUARDING MAP 6

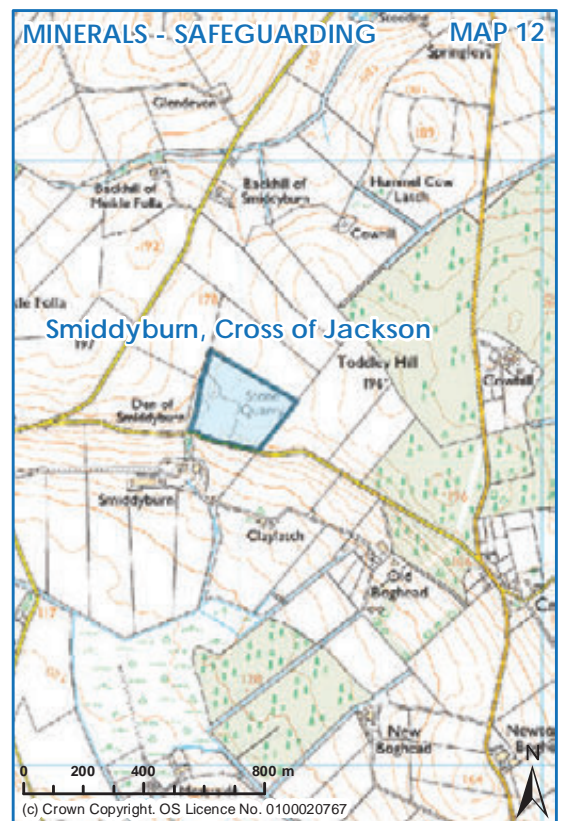
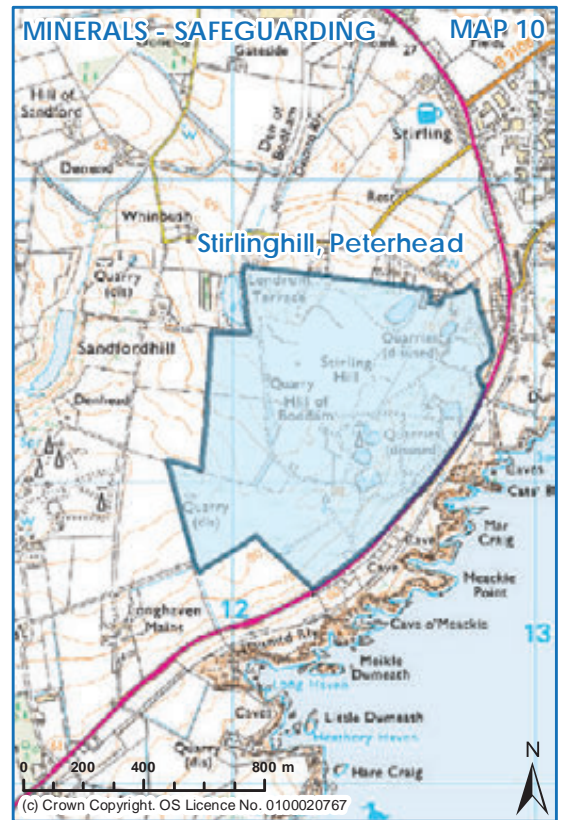
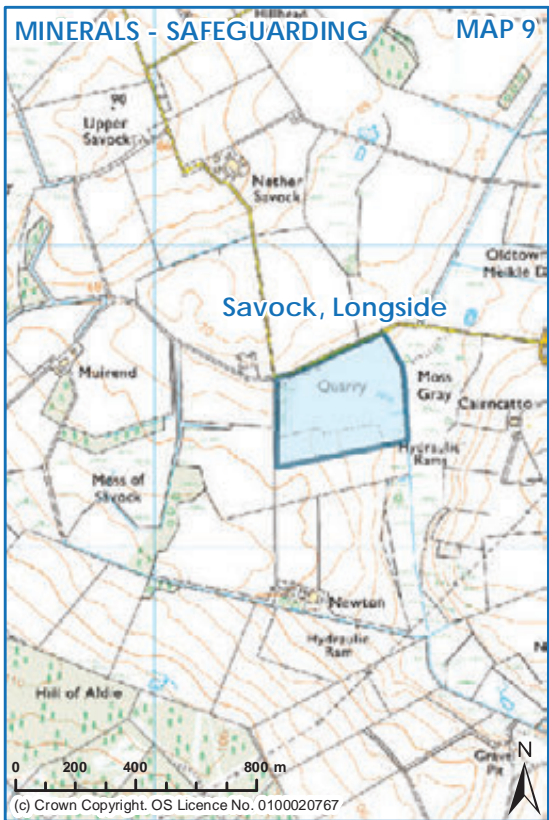


MINERALS - SAFEGUARDING MAP 7

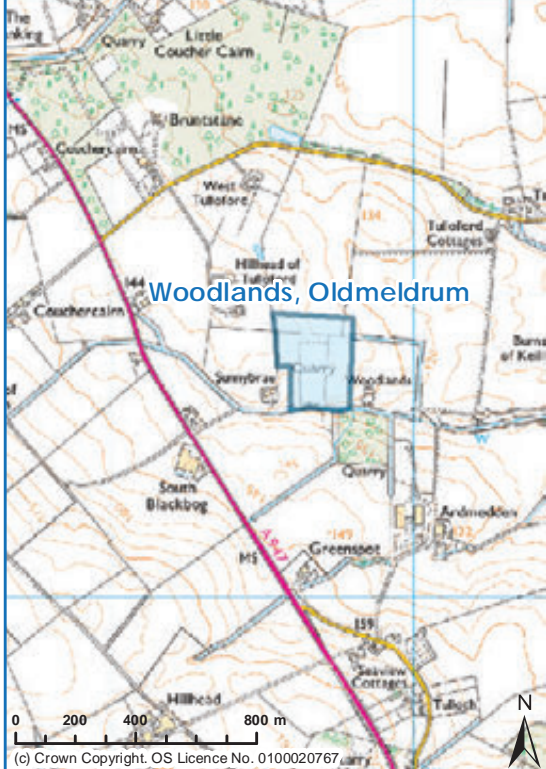


MINERALS - SAFEGUARDING MAP 8





MINERALS - SAFEGUARDING MAP 13



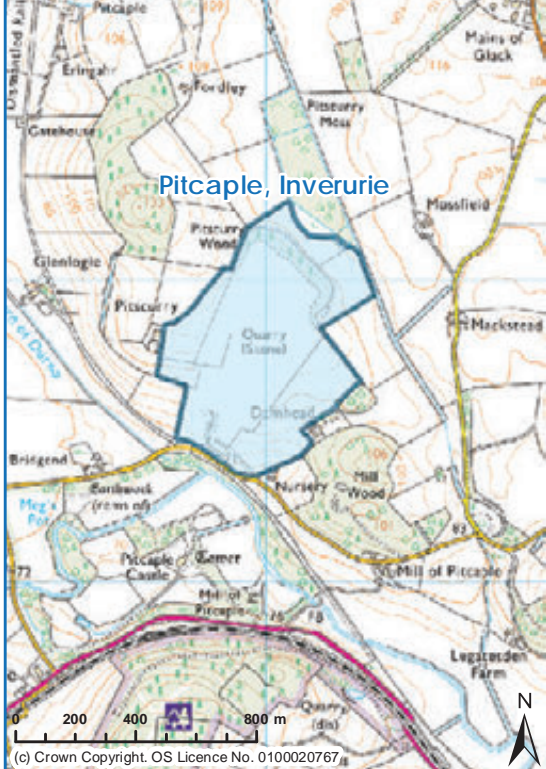
(c) Crown Copyright. OS Licence No. 0100020767

MINERALS - SAFEGUARDING MAP 14



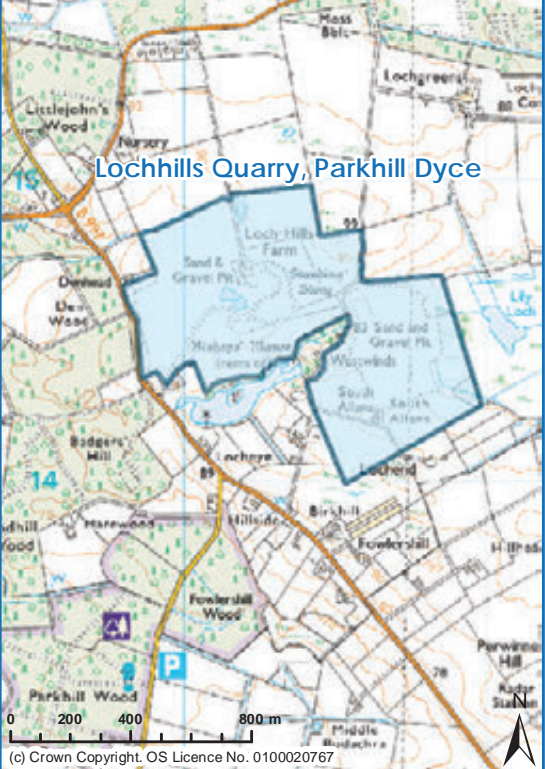
(c) Crown Copyright. OS Licence No. 0100020767

MINERALS - SAFEGUARDING MAP 15

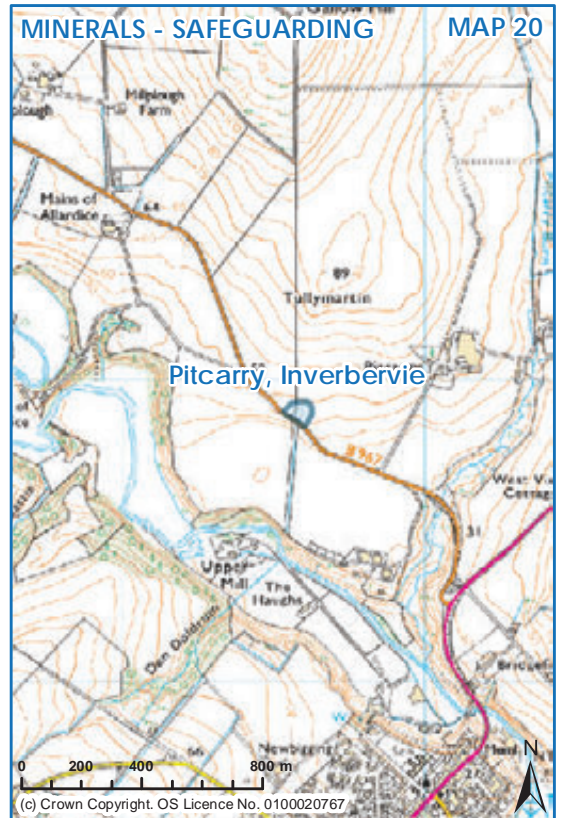
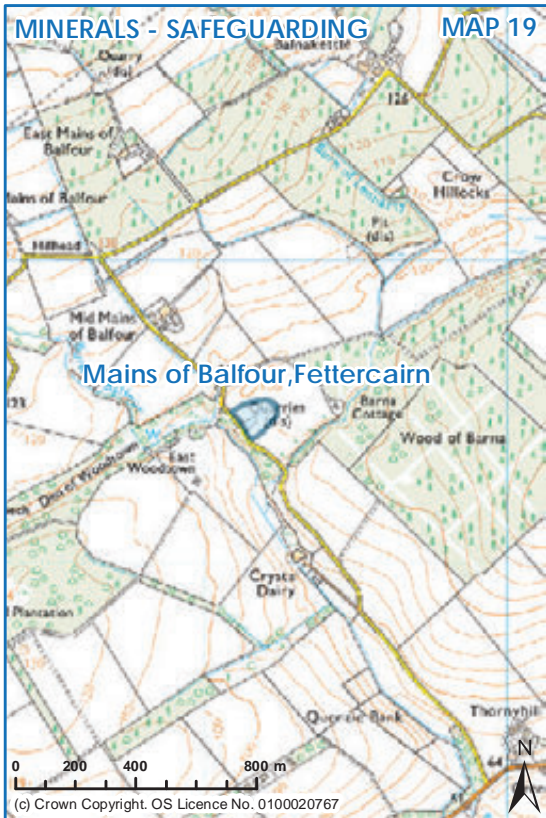
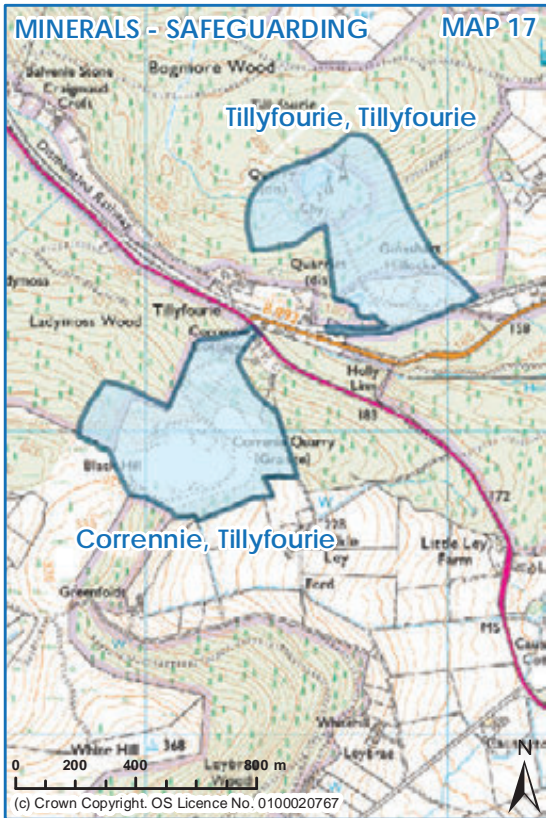


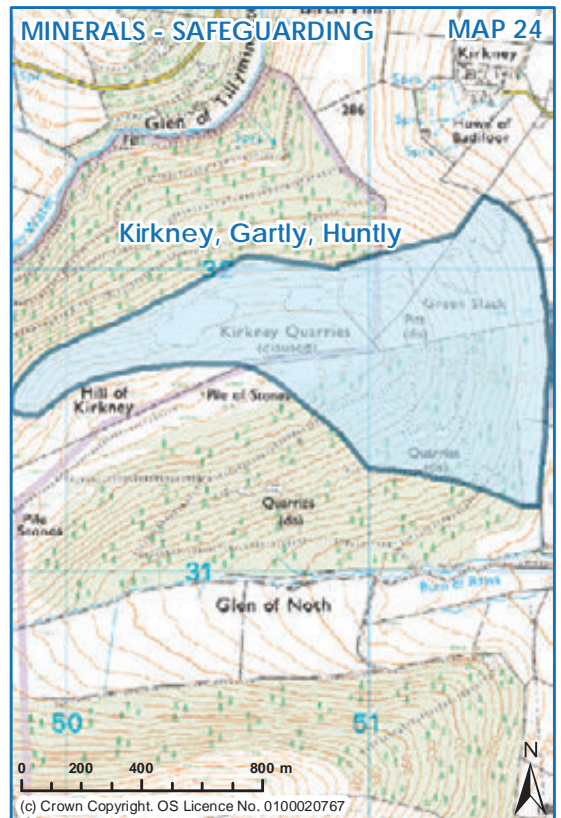
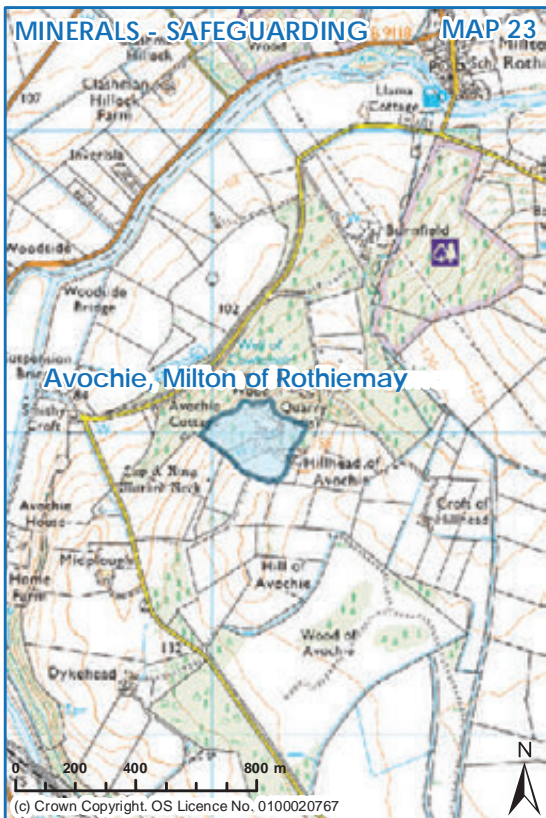
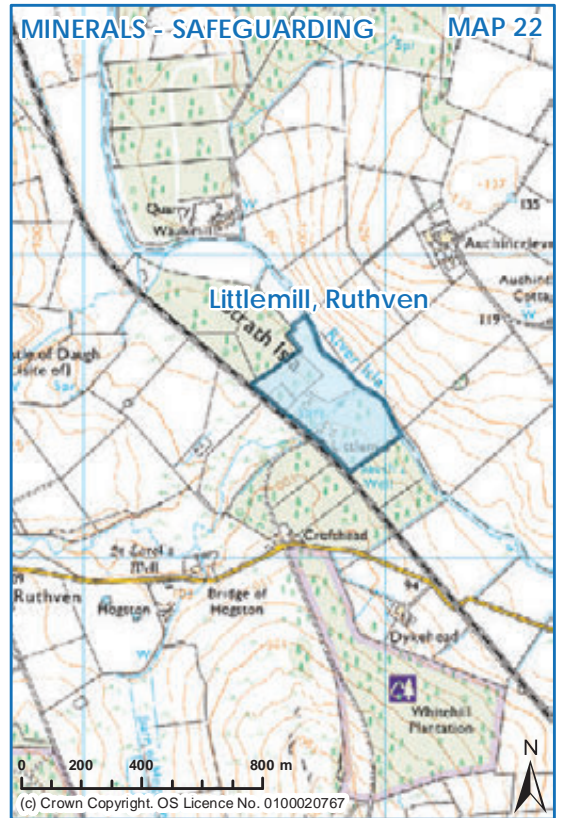
(c) Crown Copyright. OS Licence No. 0100020767

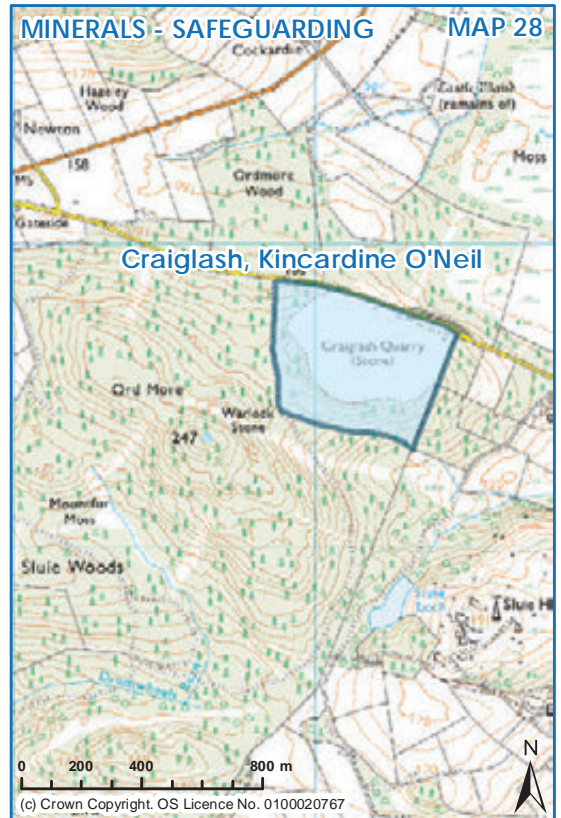
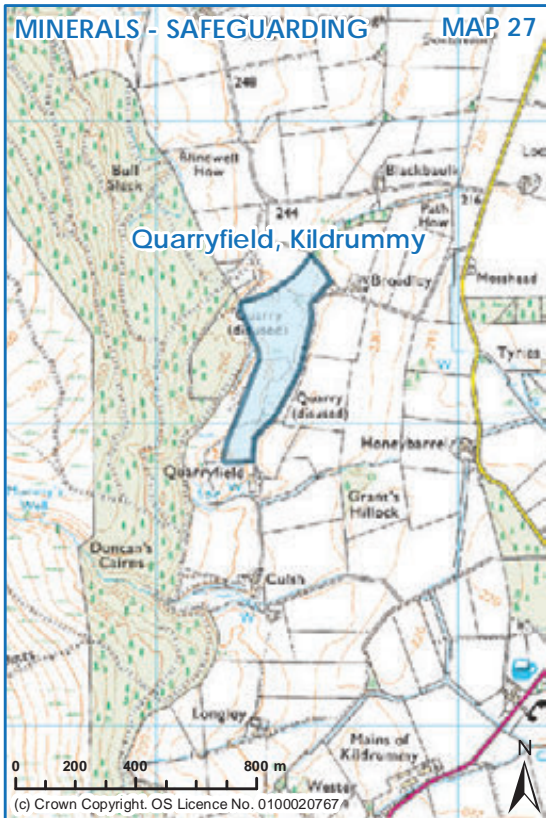
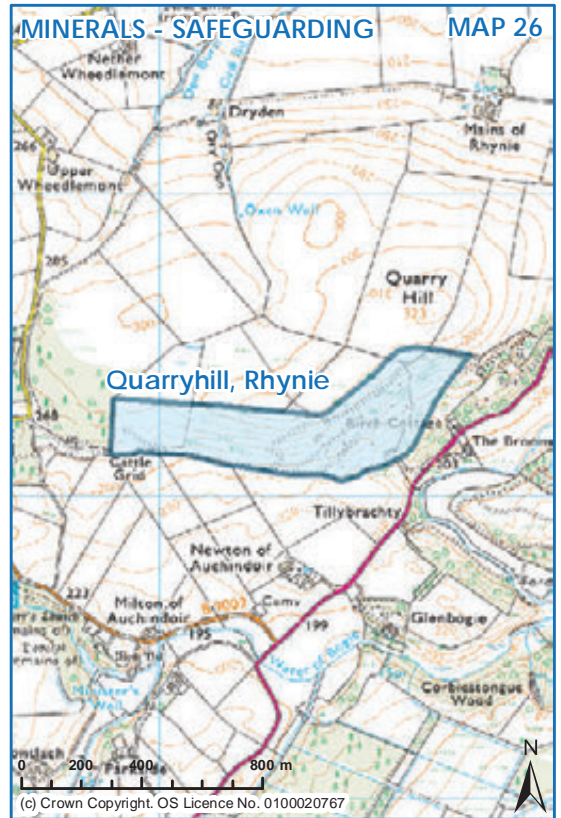
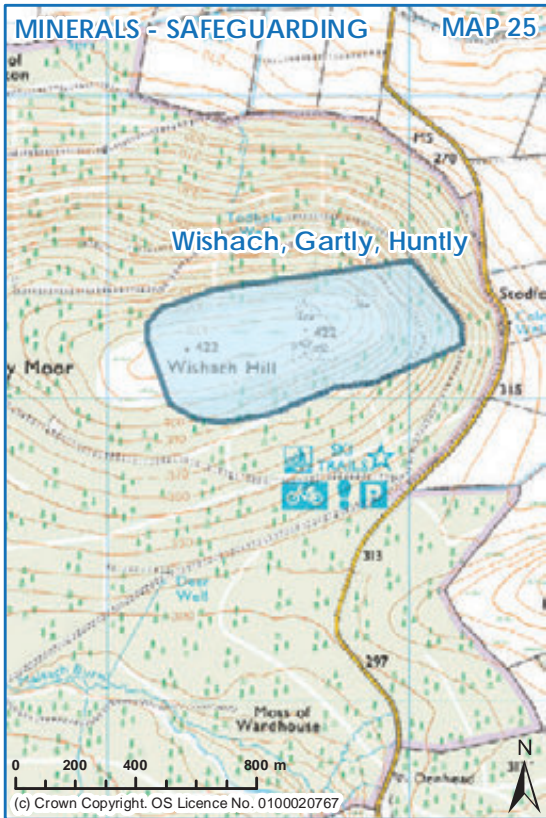
MINERALS - SAFEGUARDING MAP 16



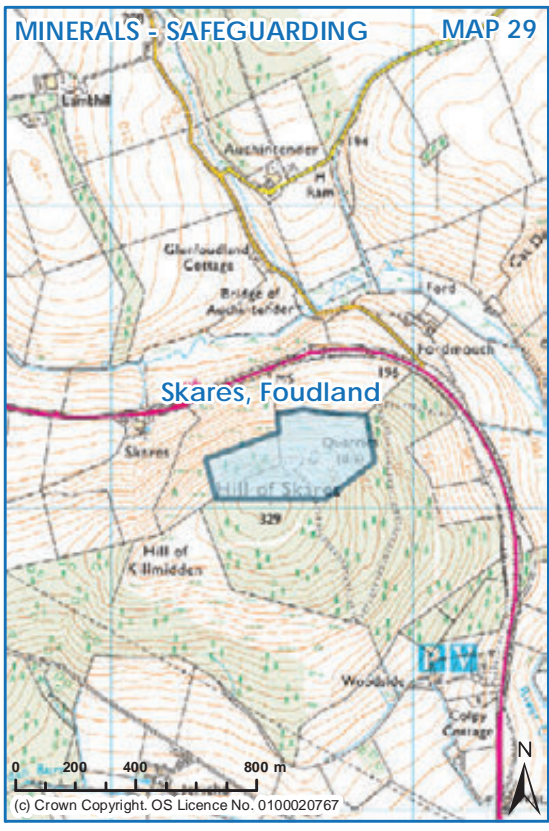
(c) Crown Copyright. OS Licence No. 0100020767







MINERALS - SAFEGUARDING MAP 29



(c) Crown Copyright. OS Licence No. 0100020767