

APPENDIX 4

BOUNDARIES OF THE GREEN BELT



APPENDIX 4

BOUNDARIES OF THE GREEN BELT

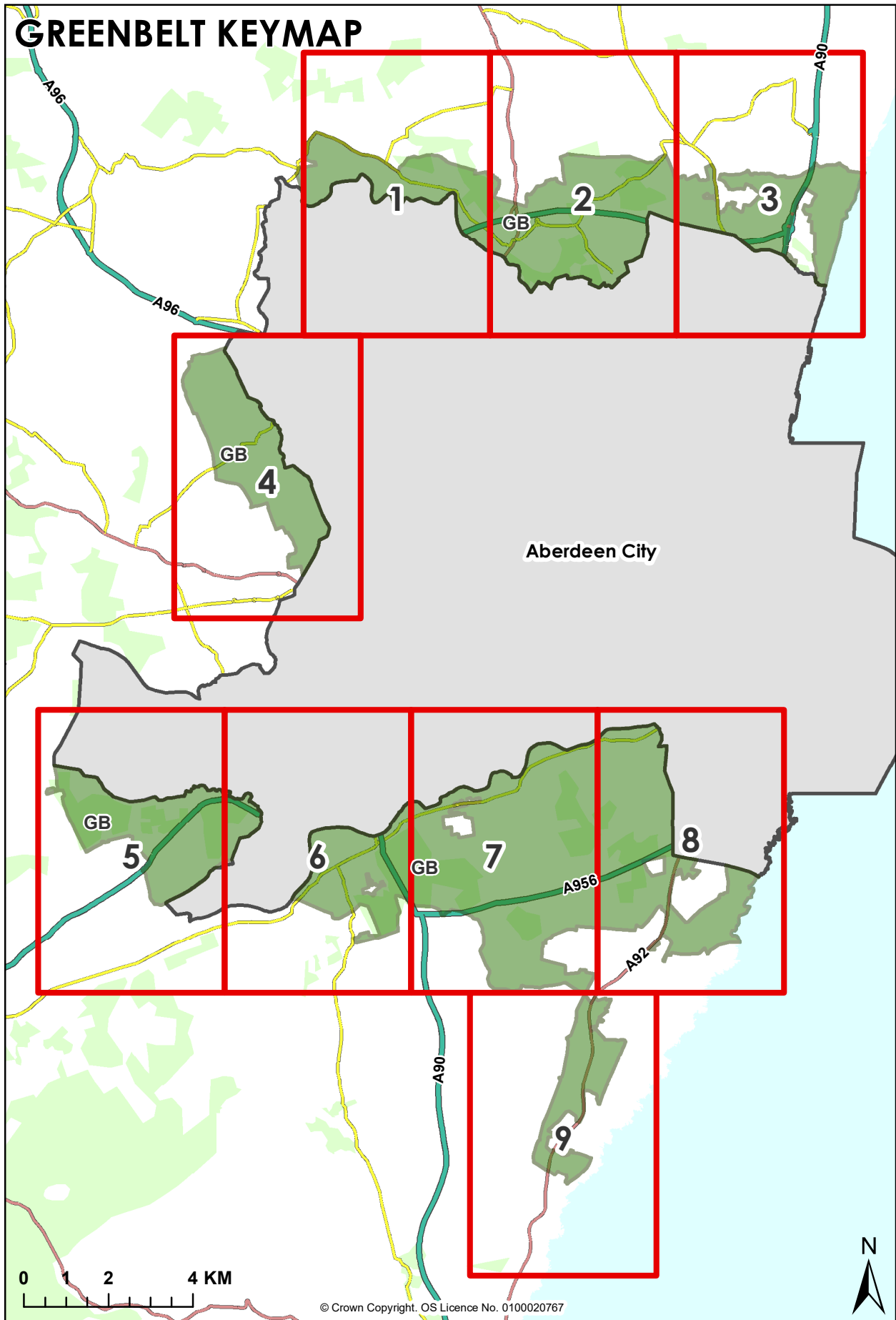
The green belt has boundaries defined by an empirical assessment of the countryside areas around Aberdeen and the function that they currently have in the development plan. This can impact on the outer edge of the green belt itself, and in particular the width of the green belt as it is found in Aberdeenshire. Strategic and Local Development Plans should be based on Spatial Strategies that are deliverable, taking into account the scale and type of development pressure and the need for growth and regeneration. For most settlements, a green belt is not necessary as other policies can provide an appropriate basis for directing development to the right locations (such as the rural development policies).

However, where the Planning Authority considers it appropriate, the development plan may designate a green belt around a city or town to support the Spatial Strategy by:

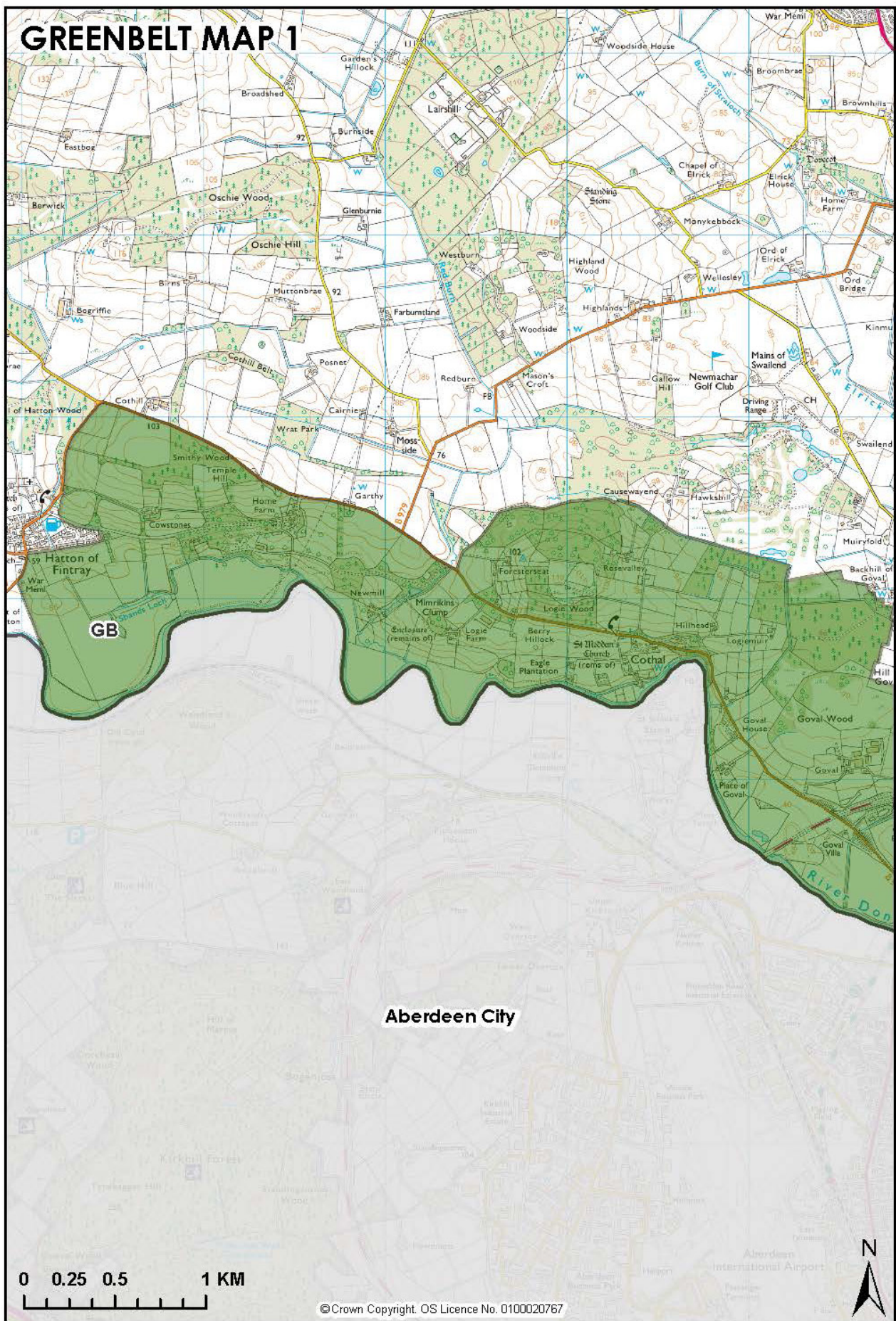
- directing development to the most appropriate locations and supporting regeneration;
- protecting and enhancing the character, landscape setting and identity of the settlement; and
- protecting and providing access to open space.

The maps that follow this appendix details the green belt boundaries.

GREENBELT KEYMAP



GREENBELT MAP 1

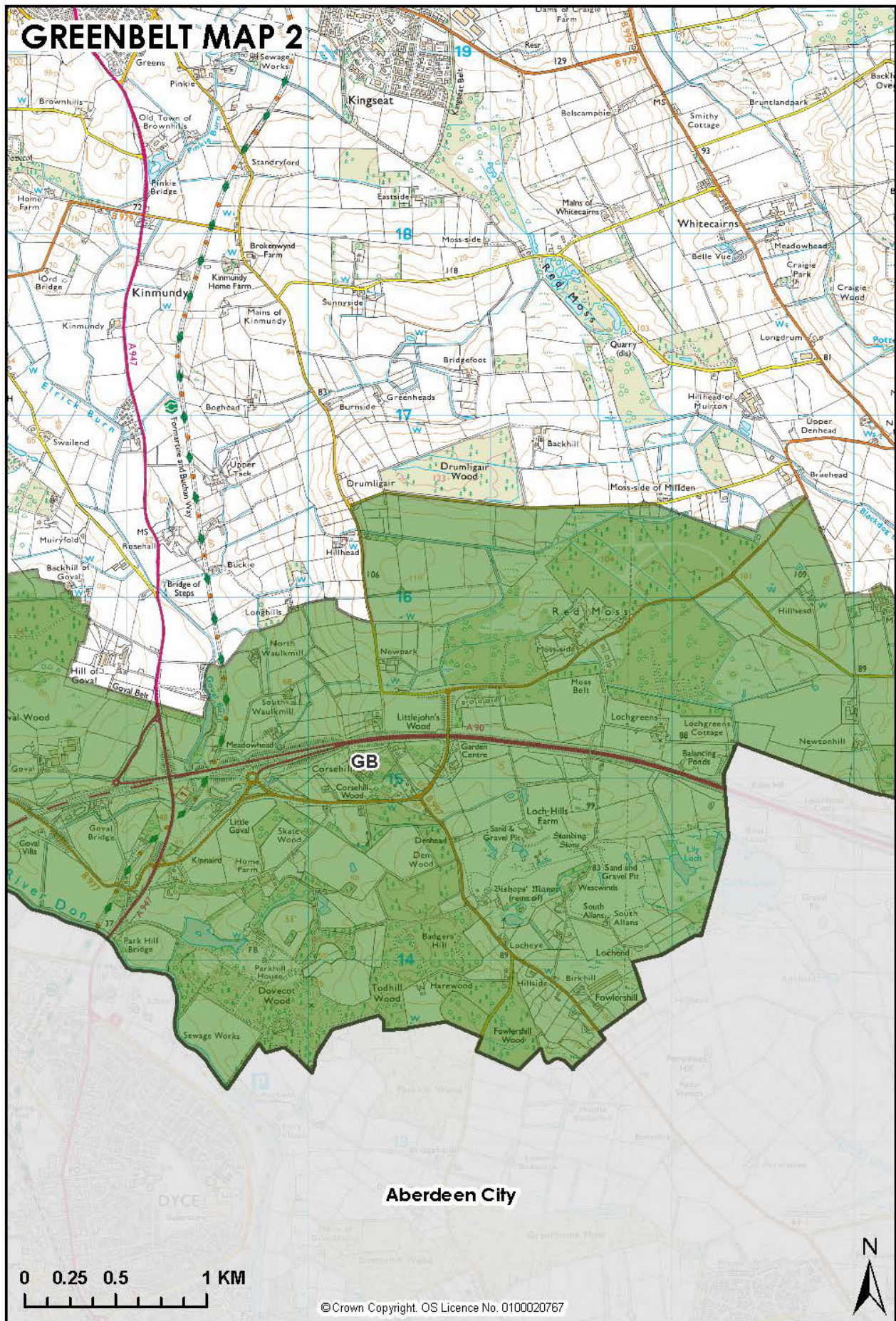


Aberdeen City

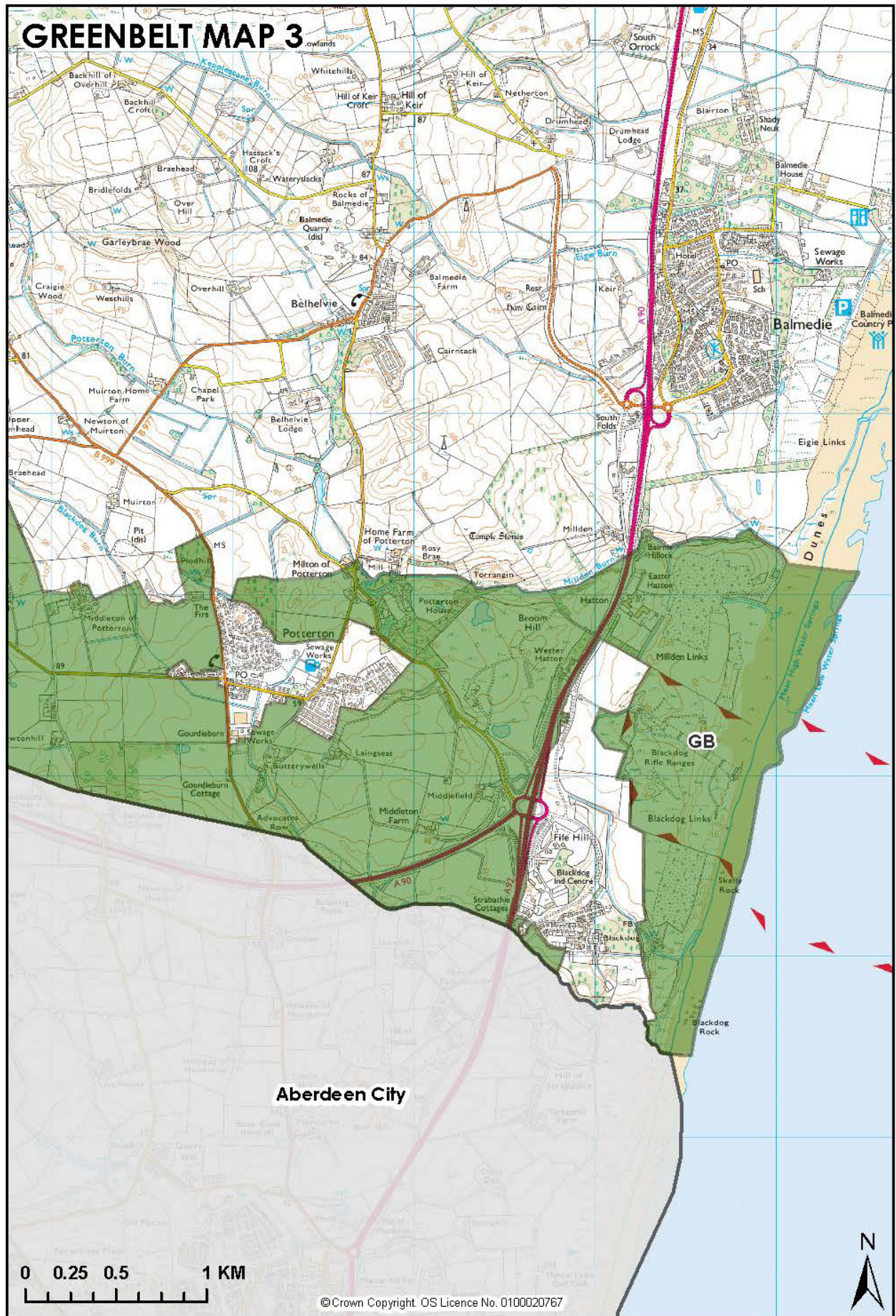
0 0.25 0.5 1 KM

©Crown Copyright. OS Licence No. 0100020767

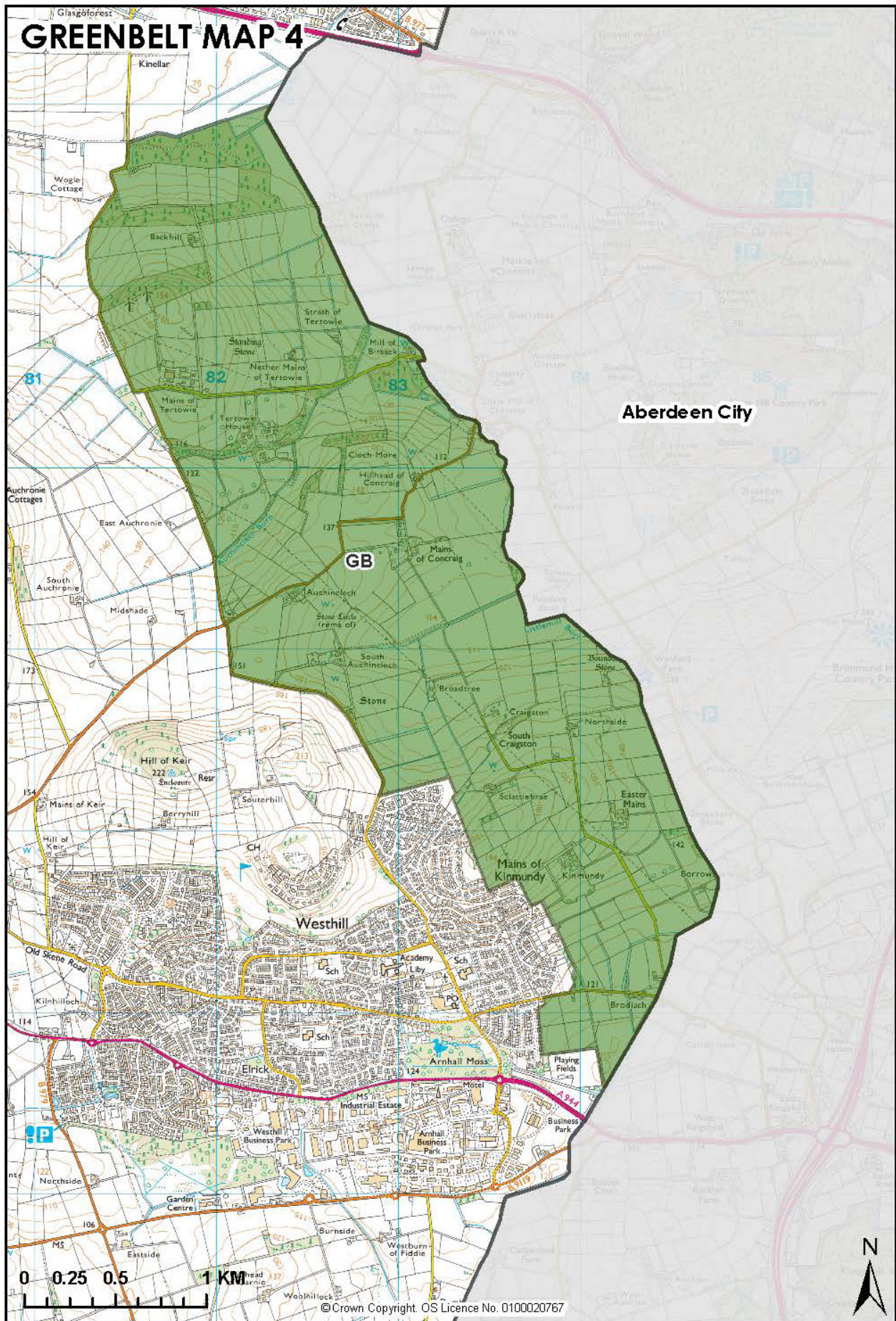




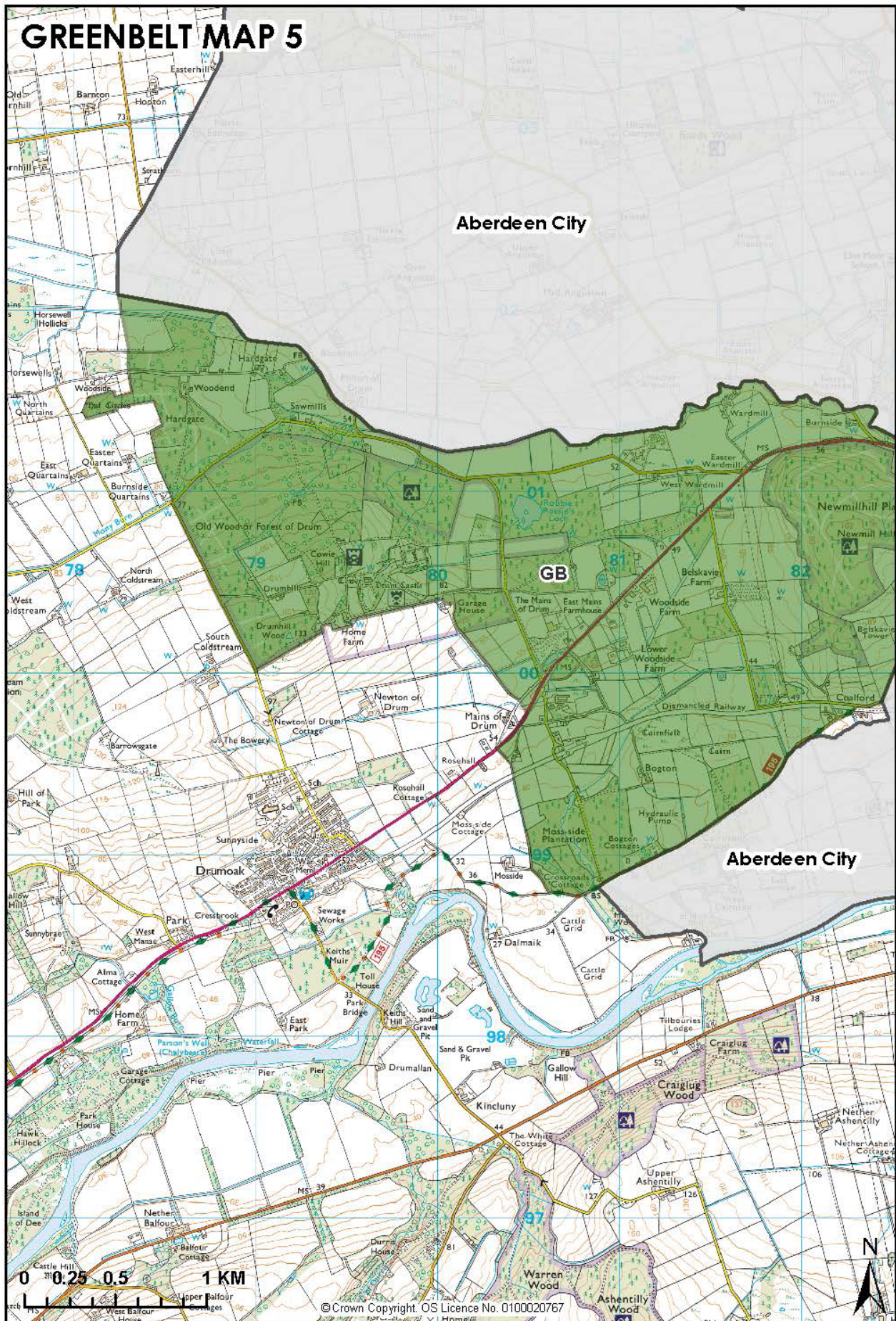
GREENBELT MAP 3



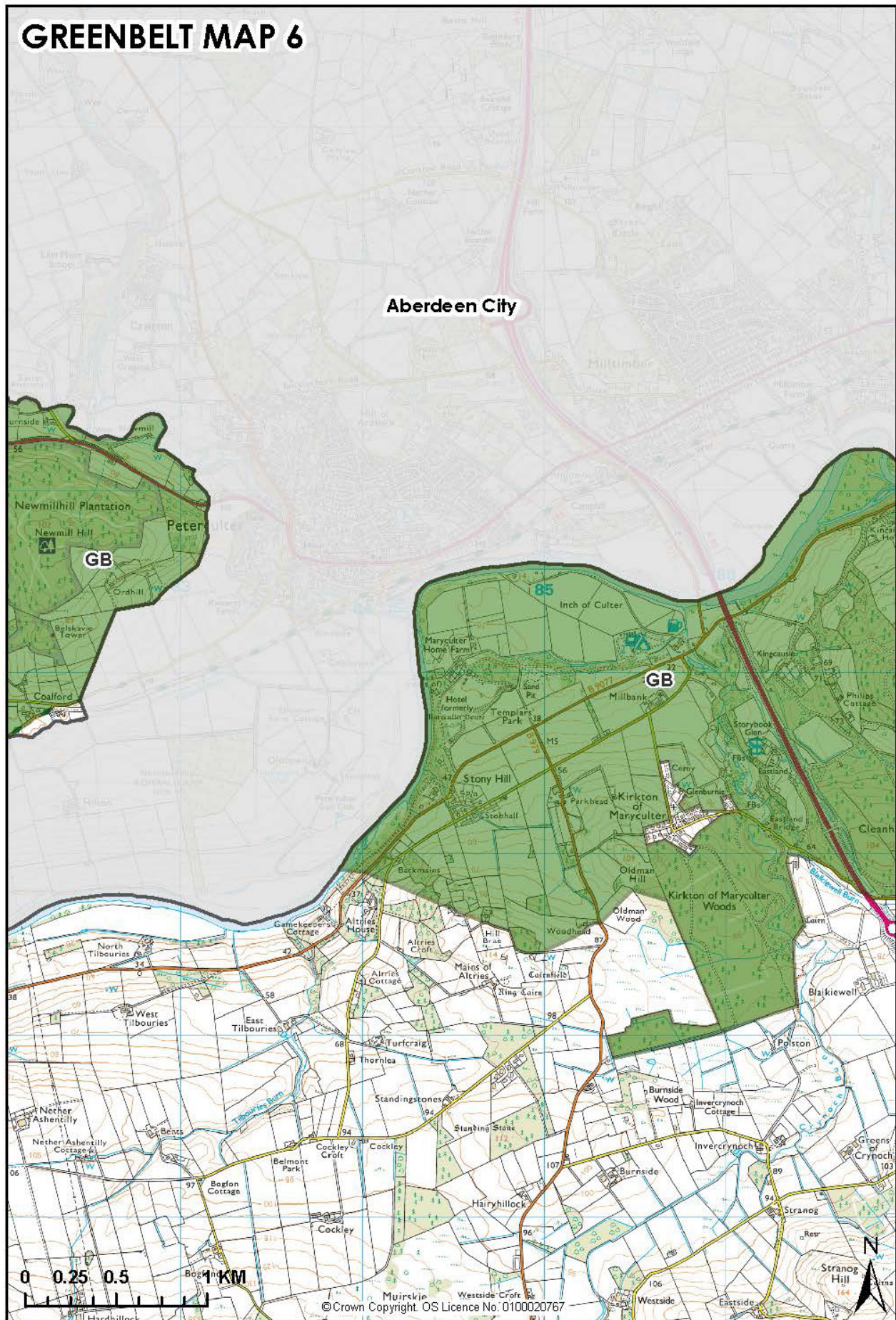
GREENBELT MAP 4



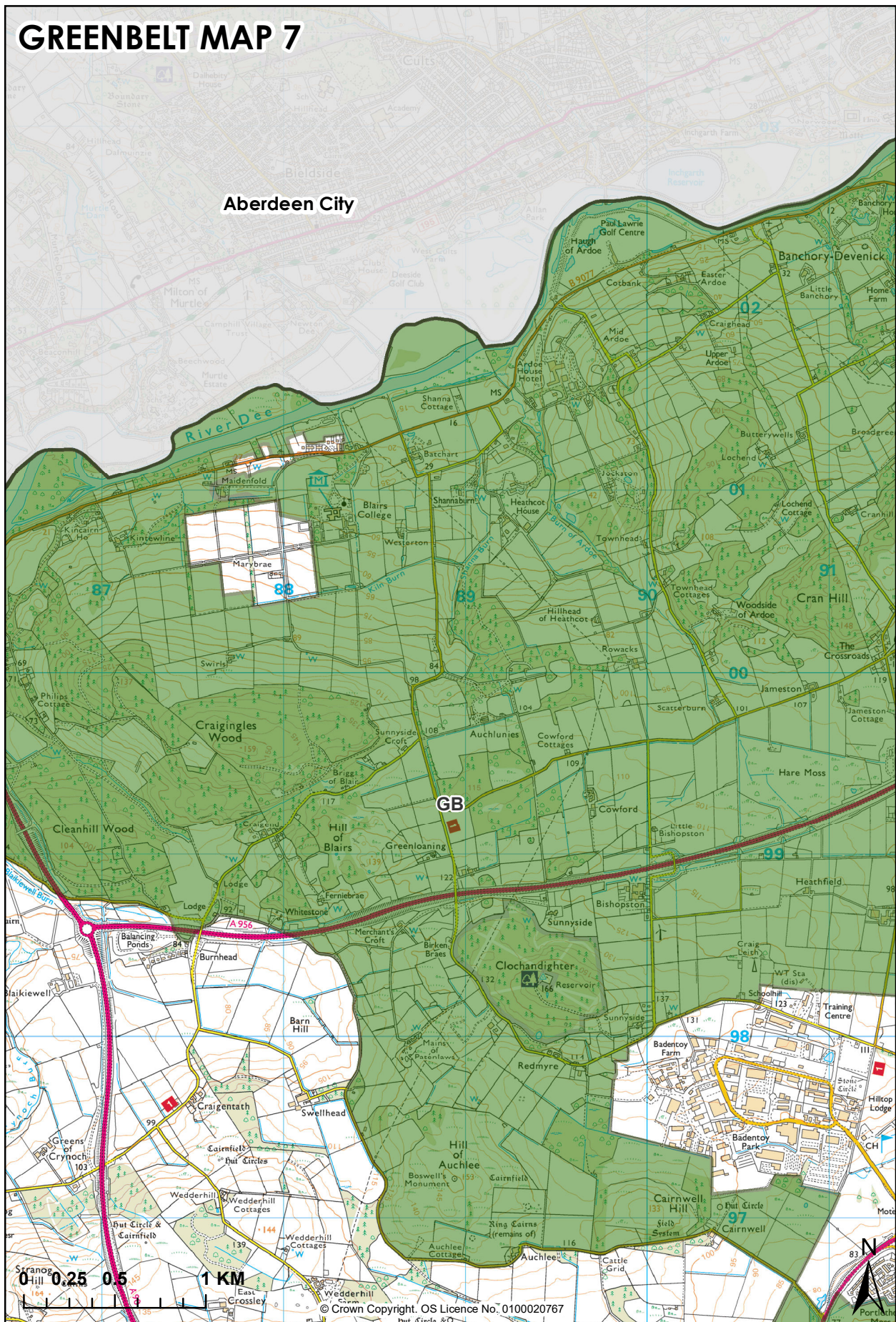
GREENBELT MAP 5



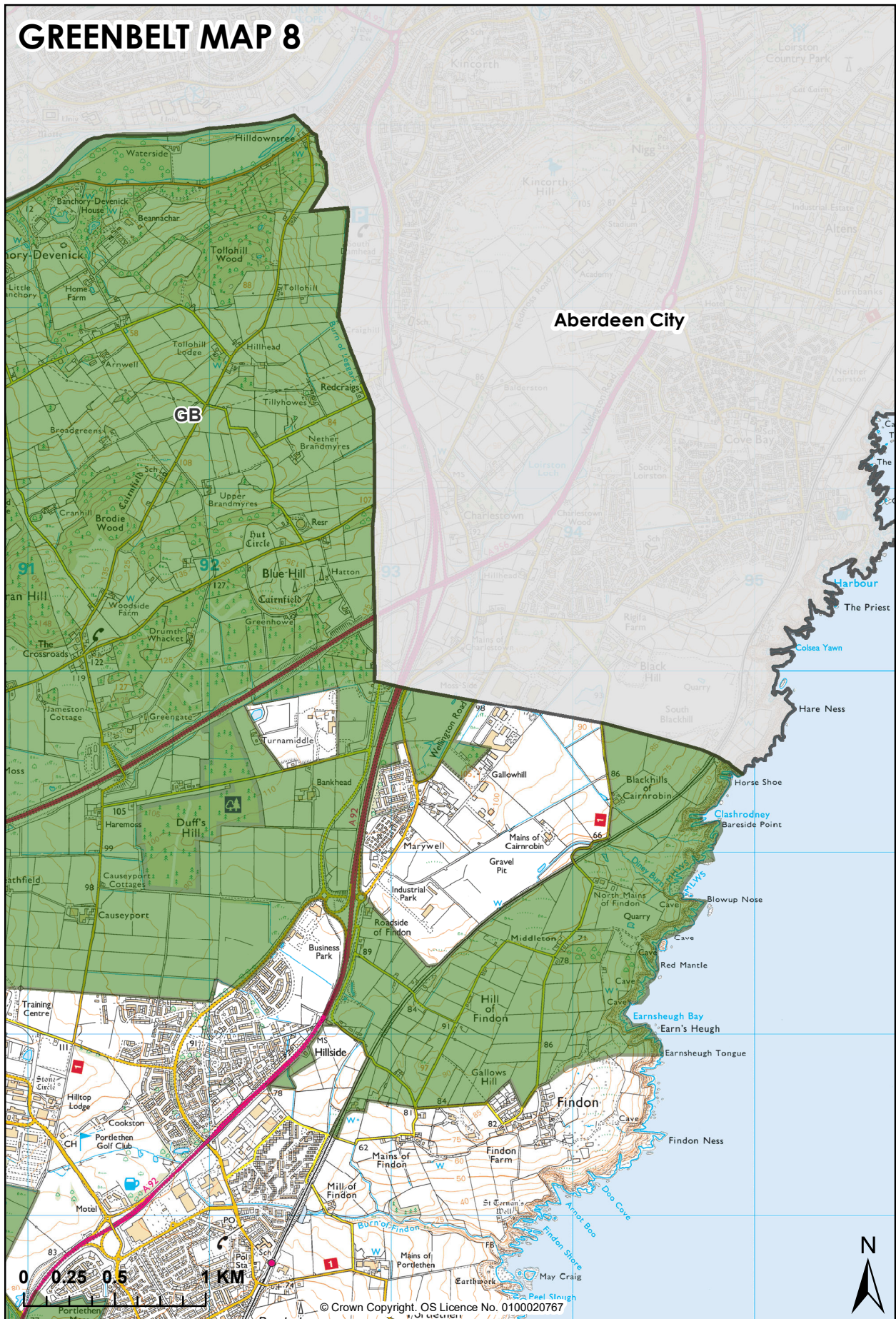
GREENBELT MAP 6



GREENBELT MAP 7



GREENBELT MAP 8



[illegible]

