



Our Ref: [REDACTED]

28 July 2020

Aberdeenshire Council
LDP@aberdeenshire.gov.uk
via email only

Dear Sir / Madam
Local Development Plan 2020 Consultation
May – July 2020
Representations on behalf of National Grid

National Grid has appointed Avison Young to review and respond to local planning authority Development Plan Document consultations on its behalf. We are instructed by our client to submit the following representation with regard to the current consultation on the above document.

About National Grid

National Grid Electricity Transmission plc (NGET) owns and maintains the electricity transmission system in England and Wales. The energy is then distributed to the electricity distribution network operators, so it can reach homes and businesses.

National Grid Gas plc (NGG) owns and operates the high-pressure gas transmission system across the UK. In the UK, gas leaves the transmission system and enters the UK's four gas distribution networks where pressure is reduced for public use.

National Grid Ventures (NGV) is separate from National Grid's core regulated businesses. NGV develop, operate and invest in energy projects, technologies, and partnerships to help accelerate the development of a clean energy future for consumers across the UK, Europe and the United States.

Proposed development sites crossed or in close proximity to National Grid assets:

Following a review of the above Development Plan Document, we have identified that one or more proposed development sites are crossed or in close proximity to National Grid assets.

Details of the sites affecting National Grid assets are provided below.



avisonyoung.co.uk

Gas Transmission

Development Plan Document Site Reference	Asset Description
R1 – St. Fergus Terminal	ST FERGUS TERMINAL - TCSITE Gas Transmission Facility

- St. Fergus Terminal is situated between Peterhead and Fraserburgh and plays a key role within the UK's gas industry due to its strategic location.
- The R1 site allocation is for major oil and gas related development within St Fergus Gas Terminal.

A plan showing details of the site locations and details of National Grid's assets is attached to this letter. Please note that this plan is illustrative only. Please see attached information outlining further guidance on development close to National Grid assets. For transparency, a separate representation is being prepared by Savills on behalf of National Grid Gas in relation to non-operational land outside of the St Fergus terminal boundary.

Further Advice

National Grid is happy to provide advice and guidance to the Council concerning their networks. If we can be of any assistance to you in providing informal comments in confidence during your policy development, please do not hesitate to contact us.

To help ensure the continued safe operation of existing sites and equipment and to facilitate future infrastructure investment, National Grid wishes to be involved in the preparation, alteration and review of plans and strategies which may affect their assets. Please remember to consult National Grid on any Development Plan Document (DPD) or site-specific proposals that could affect National Grid's assets. We would be grateful if you could check that our details as shown below are included on your consultation database:

[REDACTED], Director

nationalgrid.uk@avisonyoung.com

Avison Young



[REDACTED], Town Planner

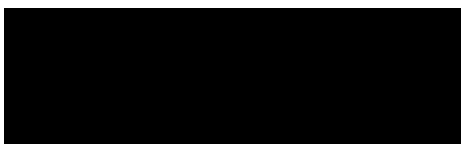
box.landandacquisitions@nationalgrid.com

National Grid



If you require any further information in respect of this letter, then please contact us.

Yours faithfully,



[REDACTED]
Director

[REDACTED]
For and on behalf of Avison Young

Guidance on development near National Grid assets

National Grid is able to provide advice and guidance to the Council concerning their networks and encourages high quality and well-planned development in the vicinity of its assets.

Electricity assets

Developers of sites crossed or in close proximity to National Grid assets should be aware that it is National Grid policy to retain existing overhead lines in-situ, though it recognises that there may be exceptional circumstances that would justify the request where, for example, the proposal is of regional or national importance.

National Grid's 'Guidelines for Development near pylons and high voltage overhead power lines' promote the successful development of sites crossed by existing overhead lines and the creation of well-designed places. The guidelines demonstrate that a creative design approach can minimise the impact of overhead lines whilst promoting a quality environment. The guidelines can be downloaded here: <https://www.nationalgridet.com/document/130626/download>

The statutory safety clearances between overhead lines, the ground, and built structures must not be infringed. Where changes are proposed to ground levels beneath an existing line then it is important that changes in ground levels do not result in safety clearances being infringed. National Grid can, on request, provide to developers detailed line profile drawings that detail the height of conductors, above ordnance datum, at a specific site.

National Grid's statutory safety clearances are detailed in their 'Guidelines when working near National Grid Electricity Transmission assets', which can be downloaded here: www.nationalgridet.com/network-and-assets/working-near-our-assets

Gas assets

High-Pressure Gas Pipelines form an essential part of the national gas transmission system and National Grid's approach is always to seek to leave their existing transmission pipelines in situ. Contact should be made with the Health and Safety Executive (HSE) in respect of sites affected by High-Pressure Gas Pipelines.

National Grid have land rights for each asset which prevents the erection of permanent/ temporary buildings, or structures, changes to existing ground levels, storage of materials etc. Additionally, written permission will be required before any works commence within the National Grid's 12.2m building proximity distance, and a deed of consent is required for any crossing of the easement.

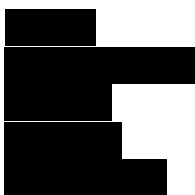
National Grid's 'Guidelines when working near National Grid Gas assets' can be downloaded here: www.nationalgridgas.com/land-and-assets/working-near-our-assets

How to contact National Grid

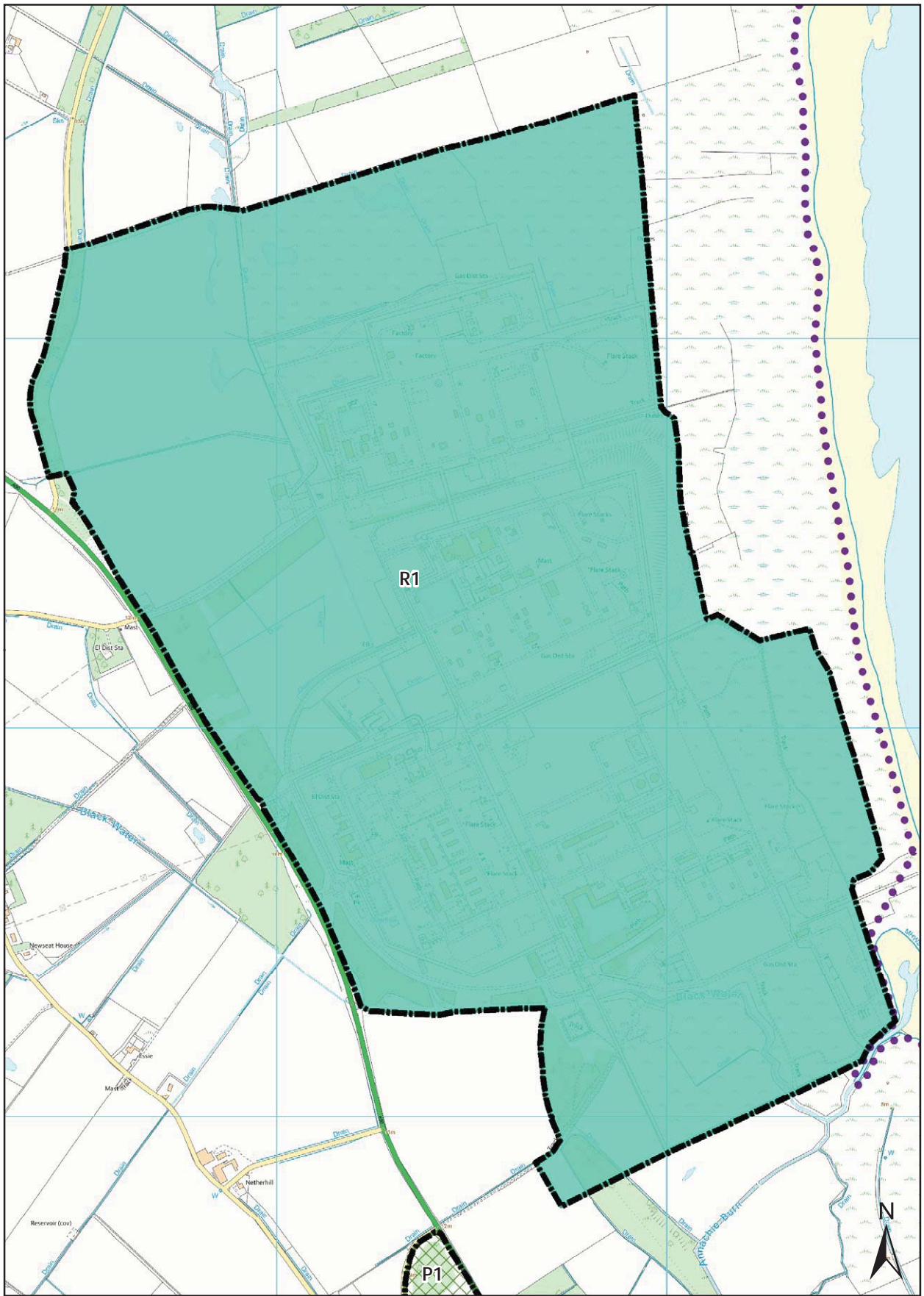
If you require any further information in relation to the above and/or if you would like to check if National Grid's transmission networks may be affected by a proposed development, please contact:

- National Grid's Plant Protection team: plantprotection@nationalgrid.com

Cadent Plant Protection Team

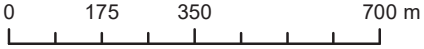


or visit the website: <https://www.beforeyoudig.cadentgas.com/login.aspx>

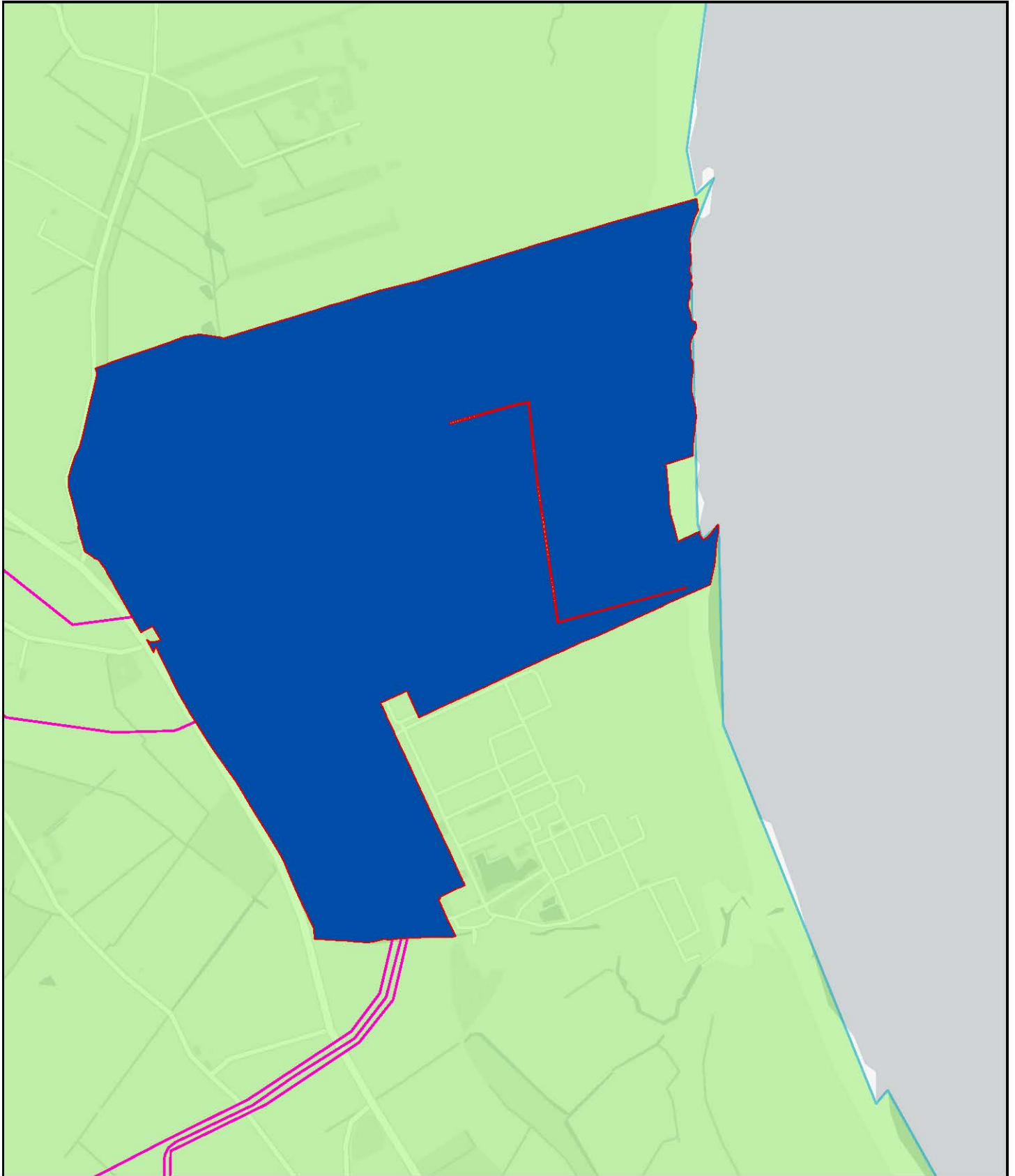


St Fergus Gas Terminal



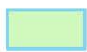

© Crown Copyright.
OS Licence No. 0100020767

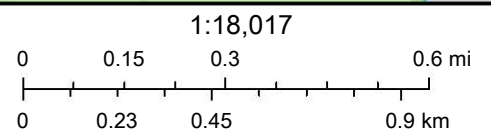


Aberdeenshire Local Development Plan 2020 - St. Fergus Terminal



11/06/2020, 16:44:30

-  Gas_Assets_7520
-  Gas_Assets_6495
-  Development_Plan_Monitoring_Consultations_vw_1604
-  Development_Plan_Monitoring_v2_977



Contains OS data © Crown Copyright and database right 2019
Contains data from OS Zoomstack